

Offshore Series Race 3

4th March

Classes, Courses and Scoring

Class / Event	Course	Handicap	Flag
Class 1	Full Course	IRC	OSCAR
Class 2		NHC	JULIET
Class 3	Junior Course	IRC	TANGO
Class 4		NHC	DELTA

Dual Scoring:

All boats will be scored in NHC results to give NHC competitors more understanding on performance.

Final NHC Series places will be allocated to competitors not entered IRC.

START

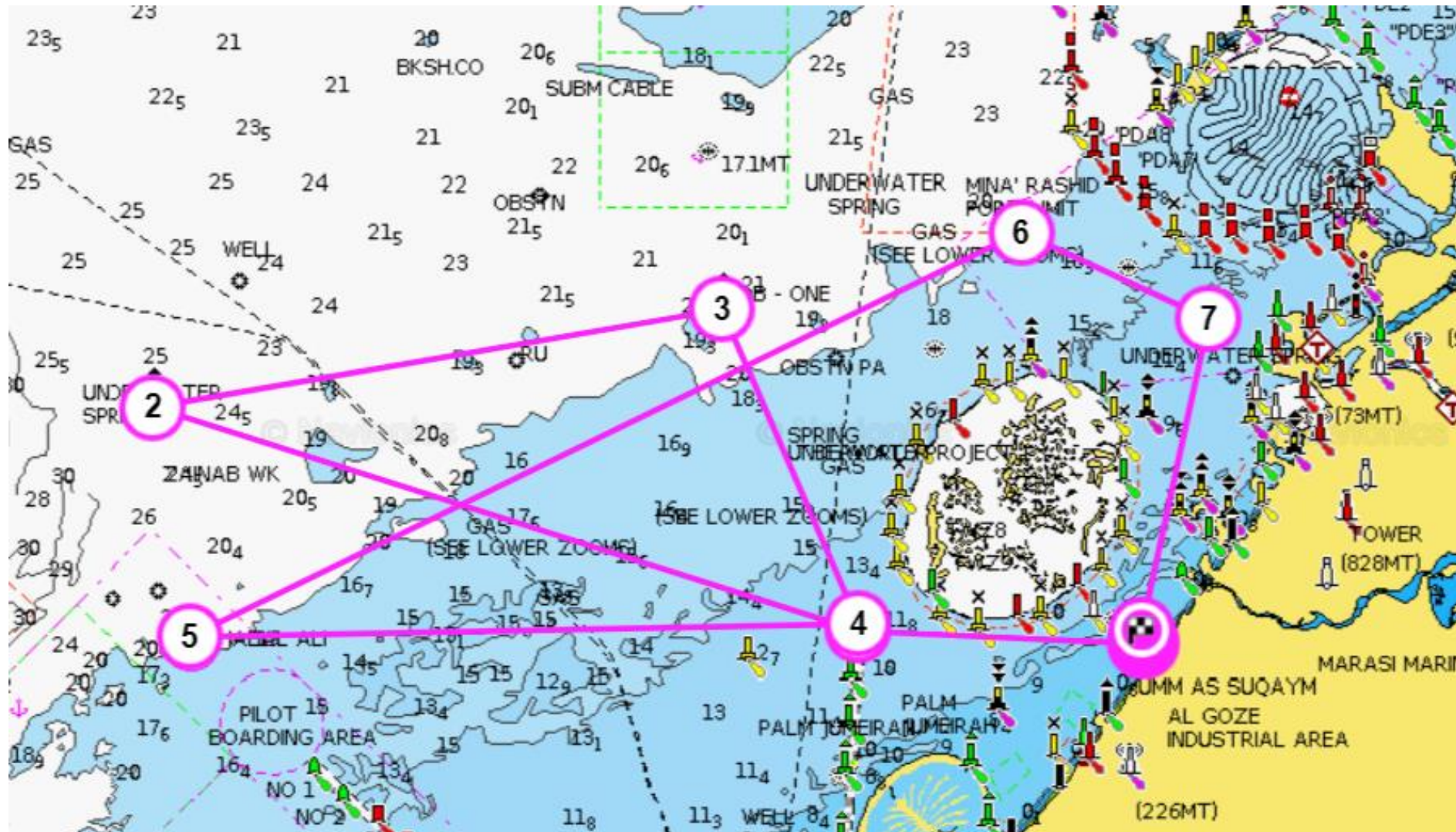
- Start Line between Rib and Inflatable Pin Mark NW of DOSC.
- Start Between committee boat to Starboard / Pin to Port
- Combined Start for all classes for both Full and Junior.
- Class Flag OSCAR will be used to start all classes.
- Please listen on VHF Ch.8 for sound signals/instructions.
- OCS Boats may be announced on VHF Channel 08.
- Warning Signal not before 11:55hrs.
- Start not before 1200hrs.
- You may wish to take a GPS waypoint of the pin prior to the start as this will be the location of the finish.

Finish

- Finish between two laid inflatables in the location of the pin. Marks should be lit with small flashing lights (not navigation lights).
- Finish – cross the line running Due South.
- You may wish to take a GPS waypoint of the pin prior to the start as this will be the location of the finish.
- In the event the marks are missing, you may declare your finish time when you are within 0.1NM of the start pin location.
- Self declaration finish. Please email finish time to: sailingadmin@doscuae.com
- Must submit finish time at the earliest opportunity and within the protest time limit.

Full Course Navionics

B Course – Approx 80nm
Start, DHA, Zainab WK,
DB1, DHA, Jebel Ali, Dubai
approach, DDW – 1, Finish



Full Course

Name	Type	Rounding	Location/ Approx Coordinates	
Start	Line Between rib & Inflatable		Close to DOSC	
DHA	Safewater	Starboard	25deg10.842N	55deg6.537E
Zainab WK	North Cardinal	Starboard	25deg15.127N	54deg 51.547E
DB 1	North Cardinal	Starboard	25deg17.002N	55deg03.675E
DHA	Safewater	Starboard	25deg10.842N	55deg6.537E
Jebel Ali	Safewater	Starboard	25deg10.611N	54deg52.322E
Dubai approach/Mina Rashid	Safewater	Starboard	25deg18.518N	55deg9.998E
DDW - 1	Safewater	Starboard	25deg16.759N	55deg14.007E
Finish	Between 2 x Inflatable Marks		Close to DOSC	

Junior Course

Name	Type	Rounding	Location/ Approx Coordinates	
Start	Line Between rib & Inflatable		Close to DOSC	
DHA	Safewater	Port	25deg10.842N	55deg6.537E
DHSE	Black Special Marker	Starboard	25deg6.125N	55deg6.207E
World Islands	Islands	Starboard		
Dubai approach/Mina Rashid	Safewater	Starboard	25deg18.518N	55deg9.998E
Finish	Between 2 x Inflatable Marks		Close to DOSC	

Additional Information

- Please be conscious of Jebel Ali Safe Water Mark.
- This is a busy shipping channel, do take caution.