

# Offshore Series Race 4

1<sup>st</sup> April 2023

# Classes, Courses and Scoring

Class / Event	Course	Handicap	Flag
Class 1	Full Course	IRC	OSCAR
Class 2		NHC	JULIET
Class 3	Junior Course	IRC	TANGO
Class 4		NHC	DELTA

## Dual Scoring:

All boats will be scored in NHC results to give NHC competitors more understanding on performance.

Final NHC Series places will be allocated to competitors not entered IRC.

# START

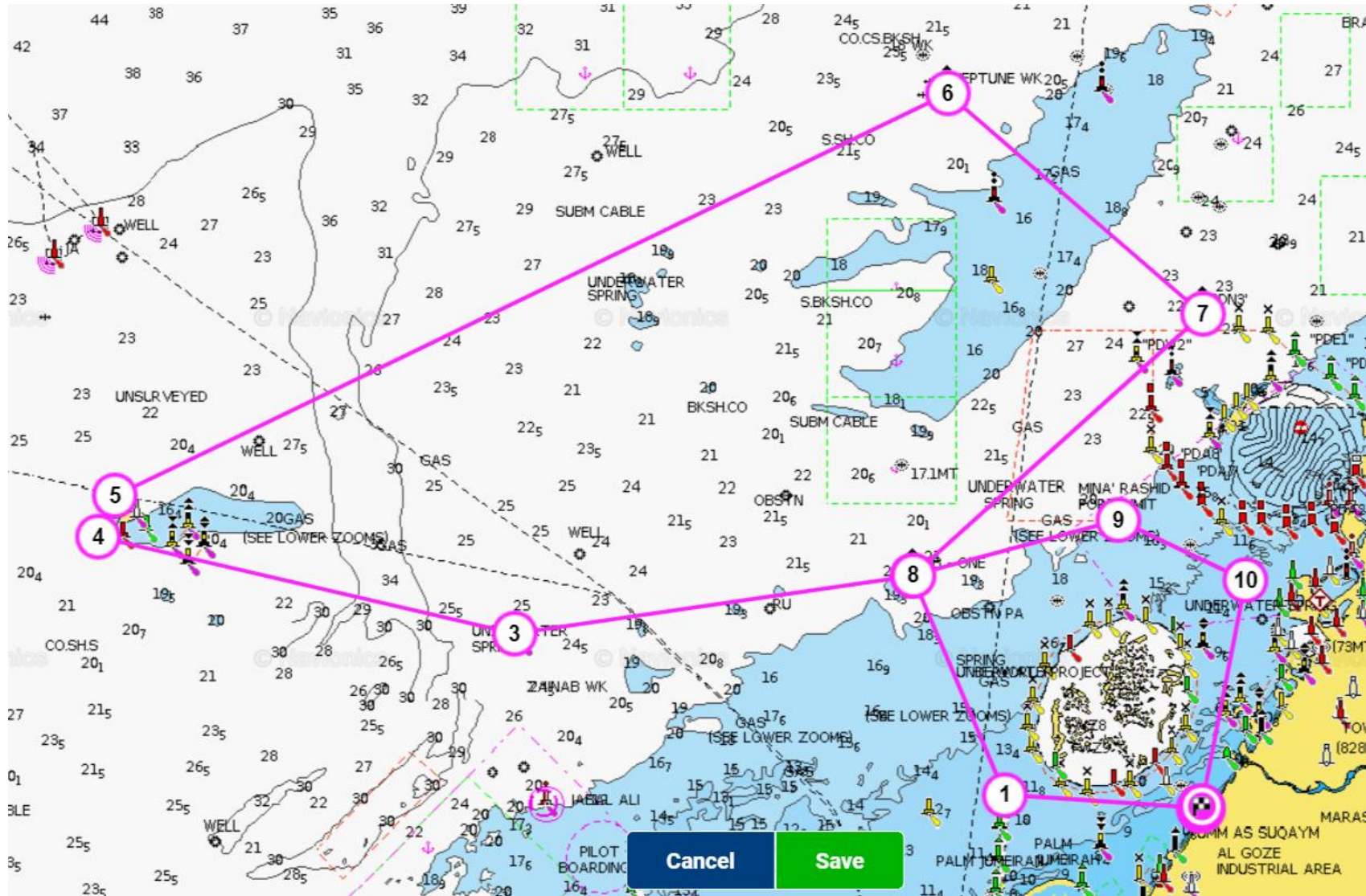
- Start Line between Rib and Inflatable Pin Mark NW of DOSC.
- Start Between committee boat to Starboard / Pin to Port
- Combined Start for all classes for both Full and Junior.
- Class Flag OSCAR will be used to start all classes.
- Please listen on VHF Ch.8 for sound signals/instructions.
- OCS Boats may be announced on VHF Channel 08.
- Warning Signal not before 11:55hrs.
- Start not before 1200hrs.
- You may wish to take a GPS waypoint of the pin prior to the start as this will be the location of the finish.

# Finish

- Finish between two laid inflatables in the location of the pin. Marks should be lit with small flashing lights (not navigation lights).
- Finish – cross the line running Due South.
- You may wish to take a GPS waypoint of the pin prior to the start as this will be the location of the finish.
- In the event the marks are missing, you may declare your finish time when you are within 0.1NM of the start pin location.
- Self declaration finish. Please email finish time to: [sailingadmin@doscuae.com](mailto:sailingadmin@doscuae.com)
- Must submit finish time at the earliest opportunity and within the protest time limit.

# Full Course Navionics

Course A – 100 nm Approx.  
Start, DHA, DB One, Zainab,  
Moon Island, Neptune,  
PDW3, DB-ONE, Mina  
Rashid, DDW1, Finish



# Full Course

Name	Type	Rounding	Location/ Approx Coordinates	
Start	Line Between rib & Inflatable		Close to DOSC	
DHA	Safewater	Starboard	25deg10.842N	55deg6.537E
DB-1	North Cardinal	Port	25deg17.002N	55deg03.675E
Zainab WK	North Cardinal	Starboard	25deg15.127N	54deg 51.547E
Moon Island	Island	Starboard	25deg18.656'N	54deg39.421'E
Neptune	East Cardinal	Starboard	25deg30.500'N	55deg4.750'E
PDW3	West Cardinal	Starboard	25deg22.622'N	55deg10.356'E
DB-1	North Cardinal	Port	25deg17.002N	55deg03.675E
Dubai approach/Mina Rashid	Safewater	Starboard	25deg18.518N	55deg9.998E
DDW - 1	Safewater	Starboard	25deg16.759N	55deg14.007E
Finish	Between 2 x Inflatable Marks		Close to DOSC	

# Junior Course Navionics



Course B – Approx 45nm  
Start, DHA, DB-1, DHLP,  
PDW3, Finish

# Junior Course

<b>Name</b>	<b>Type</b>	<b>Rounding</b>	<b>Location/ Approx Coordinates</b>	
Start	Line Between rib & Inflatable		Close to DOSC	
DHA	Safewater	Starboard	25deg10.842N	55deg6.537E
DB-1	North Cardinal	Port	25deg17.002N	55deg03.675E
DHLP	Red Lateral Mark	Port	25deg10.021'N	54deg 6.564'E
PDW3	West Cardinal	Starboard	25deg22.622'N	55deg10.356'E
Finish	Between 2 x Inflatable Marks		Close to DOSC	