

AGMC IRC Middle East Championship & Winter Regatta

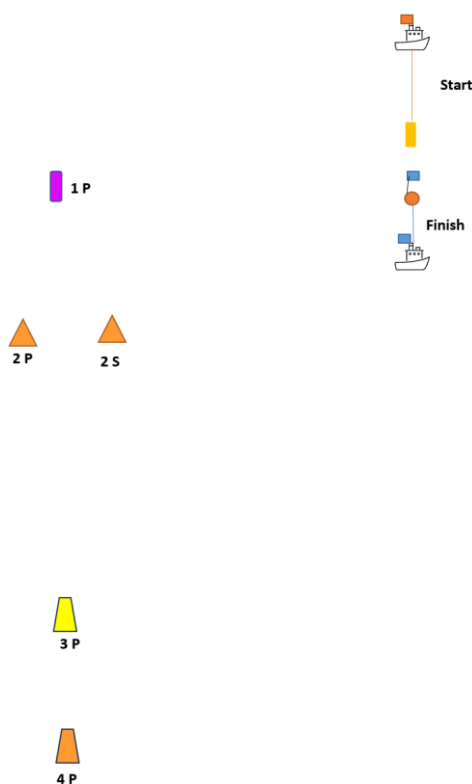
Race Day 2 : 17th December 2023

Courses

The course to be sailed will signified by a pennant displayed on a flagstaff on the start boat and may be communicated via VHF Channel 08.

Mark rounding directions are given in brackets with (P) meaning Port Rounding and (S) meaning Starboard Rounding.

Course 1

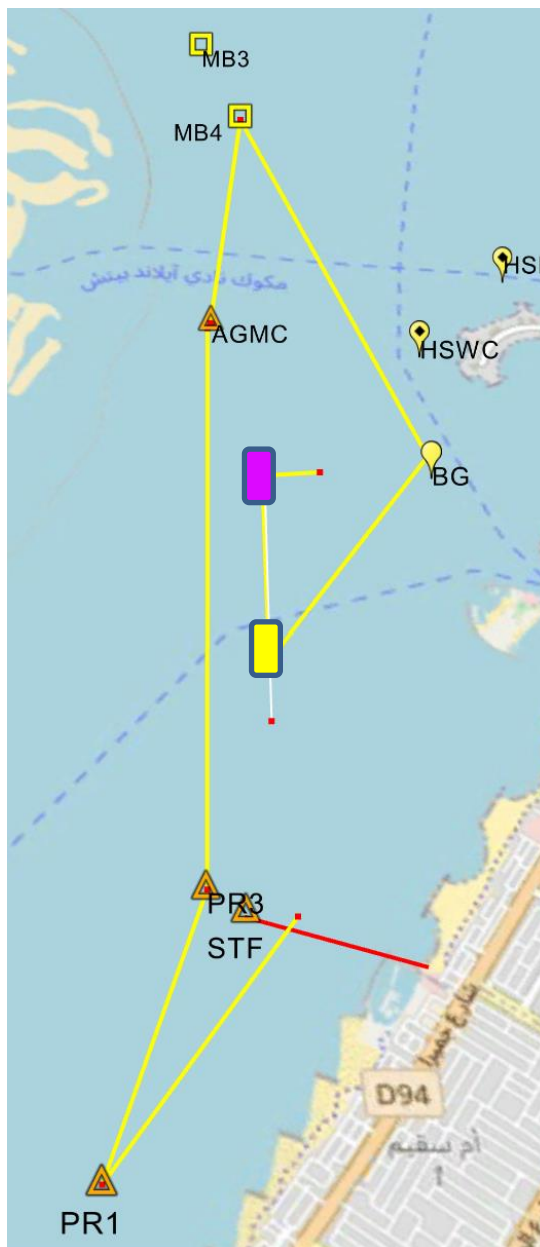
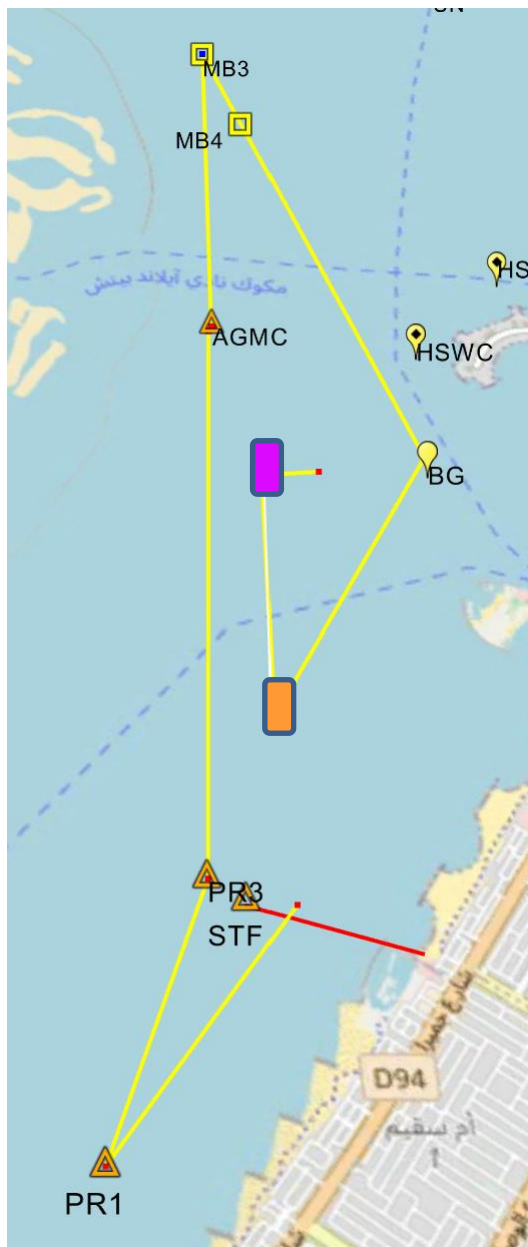


Class	Course and Rounding
IRC 1 & Multi	Start, 1(P), 2(P), 4(P), 2(P)/2(S), 4(P), 2(S), Finish
IRC 2	Start, 1(P), 2(P), 4(P), 2(P)/2(S), 3(P), 2(S), Finish
IRC 3, Cruiser & Club	Start, 1(P), 2(P), 3(P), 2(P)/2(S), 3(P), 2(S), Finish

Marks may be either laid inflatables or smart marks.

Note: If either of the gate marks, 2P or 2S, is missing, then the remaining mark should be laid to port.

Course 2



IRC 1, Multi and IRC 2

Start, 1(P), 4(P), BG(P), MB3(P), AGMC(P), PR3(S), PR1(P), Finish @ Club Line, S-N

IRC 3, IRC Cruiser and Club

Start, 1(P), 3(P), BG(P), MB4(P), AGMC(P), PR3(S), PR1(P), Finish @ Club Line, S-N

Mark Information

Abbreviation	Name	Mark Type	Lat	Long
1P, 4P, 3P	Same as course 1			
BG	Bulgari Bay	Yellow Special Mark	25° 12.550'N	55° 13.372'E
MB3	Mooring Buoy 3	Fixed Mooring Buoy	25° 14.766'N	55° 12.602'E
MB4	Mooring Buoy 4	Fixed Mooring Buoy	25° 14.342'N	55° 12.746'E
AGMC	AGMC	Laid Inflatable	25° 13.245'N	55° 12.509'E
PR3	Pursuit Race 3	Laid Inflatable	25° 10.768'N	55° 12.262'E
PR1	Pursuit Race 1	Laid Inflatable	25° 9.736'N	55° 11.803'E

Notice to Competitors #2 – Posted 17/12/2023

Laid inflatables may be any colour or shape and may be smart marks. The colour and shape of marks may be communicated via VHF Channel 8.

The start for course 2 will be using the same start line as Course 1.

The finish for course 2 will be at the 'Club Line, S-N'.

The 'Club Line'

This race will be finished at the 'Club Line'.

If there is finish boat flying a blue flag anchored at STF, this boat will take your finish time when you cross the line between the boat and the yellow special mark on the end of the breakwater.

When no finish boat is present, competitors must take their own finish time using GPS time and send it to sailingadmin@doscuae.com within 30 minutes of finishing in the HH:MM:SS format.

The club line is a transit of the mobile phone mast (with red aviation light) and yellow special marker on the end of the breakwater (with yellow navigation light).

The club line extends 500m/0.27NM from the end of the breakwater and boats should start/finish within this distance. Laid inflatable STF marks the limit of the 500m/0.27NM and when laid, boats should start/finish within this mark, but the start line and finish line will be the transit, and finish times should be taken when the transit is crossed, irrespective of when the mark is passed.



'Club Line, N-S' denotes crossing the line from North to South.

'Club Line, S-N' denotes crossing the line from South to North.

Name	Latitude	Longitude
STF Laid Inflatable (When Laid) or Finish Boat (When Present)	25° 10.682'N	55° 12.403'E
Mobile Phone Mast (Red Aviation Strobe)	25° 10.502'N	55° 13.059'E
Yellow Special Mark on End of Breakwater (Yellow Nav Strobe)	25° 10.605'N	55° 12.687'E