

Bill Nelson

Offshore Series Race 2

20th January 2024

The Course

Classes, Courses and Scoring

Class / Event	Course	Handicap	Flag
Class 1	Full Course	IRC	OSCAR
Class 2		NHC	JULIET
Class 3	Junior Course	IRC	TANGO
Class 4		NHC	DELTA

Dual Scoring:

All boats will be scored in NHC results to give NHC competitors more understanding on performance.

Final NHC Series places will be allocated to competitors not entered IRC.

START

- Start Line between Rib and Inflatable Orange Triangle Mark NW of DOSC.
- Start Between committee boat to Starboard / Pin to Port
- Combined Start for all classes for both Full and Junior.
- Class Flag OSCAR will be used to start all classes.
- Please listen on VHF Ch 08 for sound signals/instructions.
- OCS Boats may be announced on VHF Channel 08
- Warning Signal not before 12:55hrs.
- Start not before 13:00hrs.

Finish

- Self declaration finish. Please email finish time to: sailingadmin@doscuae.com
- Must submit finish time at the earliest opportunity and within the protest time limit.
- Boats Must finish through the Club Finish Line (Transit).

Finish

The club line is a transit of the mobile phone mast (with red aviation light) and yellow special marker on the end of the breakwater (with yellow navigation light).

The club line extends 500m/0.27NM from the end of the breakwater and boats should start/finish within this distance. Laid inflatable STF marks the limit of the 500m/0.27NM and when laid, boats should start/finish within this mark, but the start line and finish line will be the transit, and finish times should be taken when the transit is crossed, irrespective of when the mark is passed.

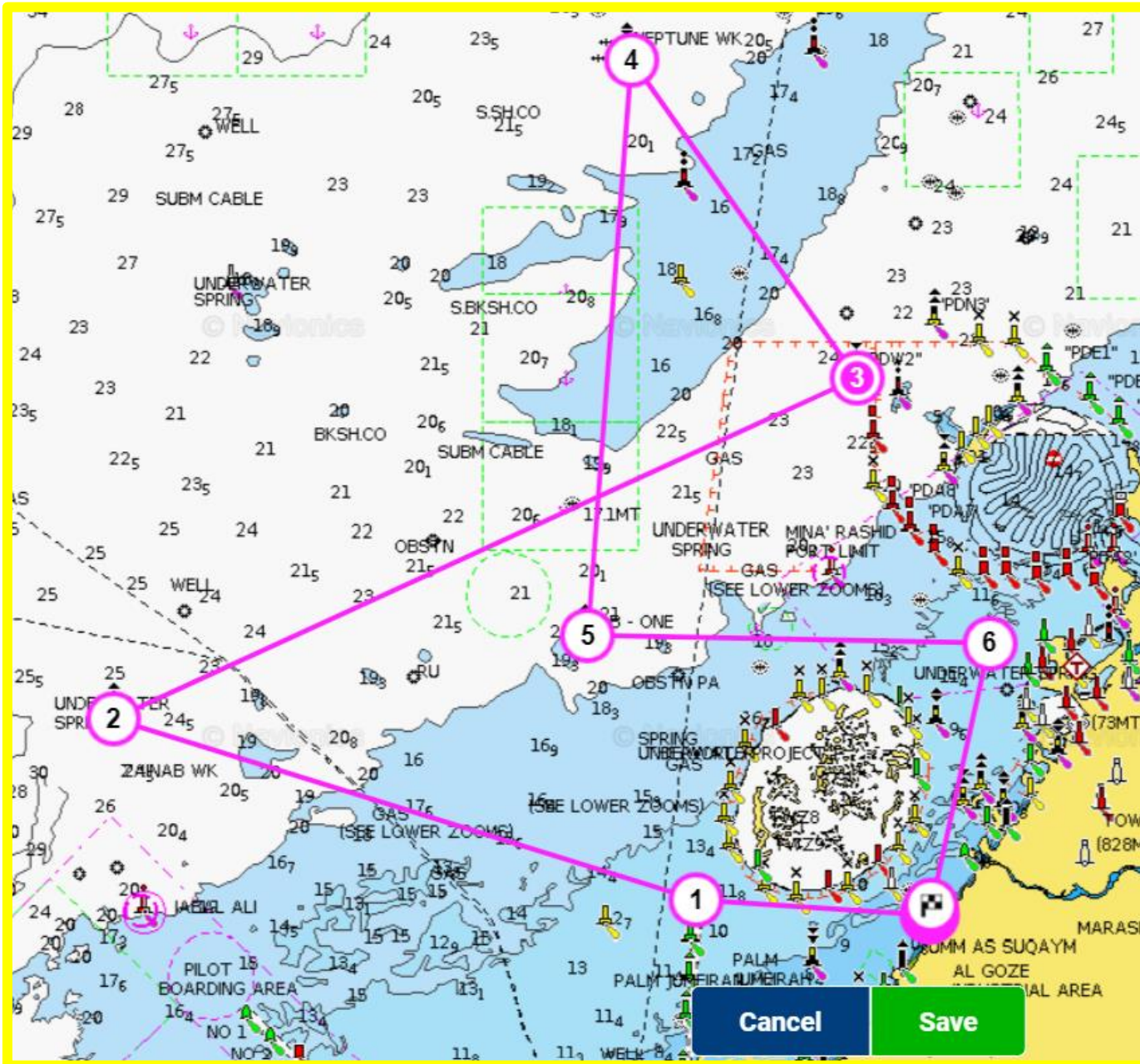


'Club Line, N-S' denotes crossing the line from North to South.

'Club Line, S-N' denotes crossing the line from South to North.

Name	Latitude	Longitude
STF Laid Inflatable (When <u>Laid</u>) or Finish Boat (When Present)	25° 10.682'N	55° 12.403'E
Mobile Phone Mast (Red Aviation Strobe)	25° 10.502'N	55° 13.059'E
Yellow Special Mark on End of <u>Breakwater</u> (Yellow Nav Strobe)	25° 10.605'N	55° 12.687'E

Full Course Navionics



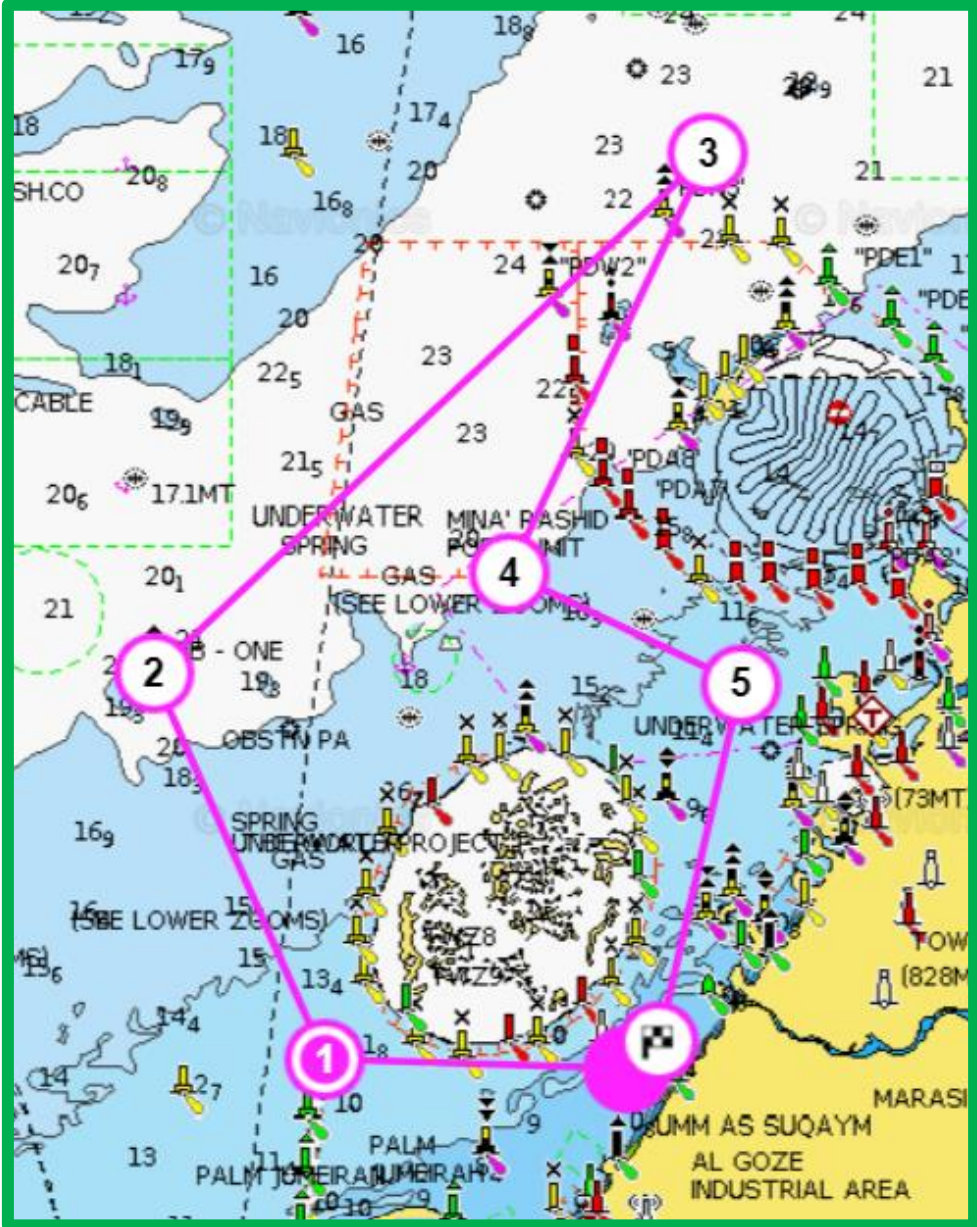
Course – Approx
79nm.

Start, DHA(S),
Zainab(S), PDN5(P),
Neptune(P), DB-1
(P), DDW-1(S), Finish
Club Line N – S'

Full Course

Name	Mark Type	Rounding	Lat	Long
Start	Race Committee & Orange Inflatable			
Dubai Harbour Approach	Safe Water Mark	Starboard	25° 10.834'N	55° 6.533'E
Zainab	North Cardinal	Starboard	25° 15.127'N	54° 51.547'E
PDN5	North Cardinal	Port	25° 24.191'N	55° 12.354'E
Neptune	East Cardinal	Port	25° 30.362'N	55° 4.749'E
DB1	North Cardinal	Port	25° 17.002'N	55° 3.675'E
Dry Docks World 1	Safe Water Mark	Starboard	25° 16.850'N	55° 14.104'E
Finish	Finish @ Club Line	N - S'		

Junior Course



Course – Approx
40nm
Start, DHA(S), DB-1
(S), PDN5(S), Mina
Rashid(P), DDW-1(S),
Finish N – S'

Junior Course

Name	Mark Type	Rounding	Lat	Long
Start	Race Committee & Orange Inflatable			
Dubai Harbour Approach	Safe Water Mark	Starboard	25° 10.834'N	55° 6.533'E
DB1	North Cardinal	Starboard	25° 17.002'N	55° 3.675'E
PDN5	North Cardinal	Starboard	25° 24.191'N	55° 12.354'E
Mina Rashid	Safe Water Mark	Port	25° 18.425'N	55° 10.051'E
Dry Docks World 1	Safe Water Mark	Starboard	25° 16.850'N	55° 14.104'E
Finish	Finish @ Club Line	N - S'		

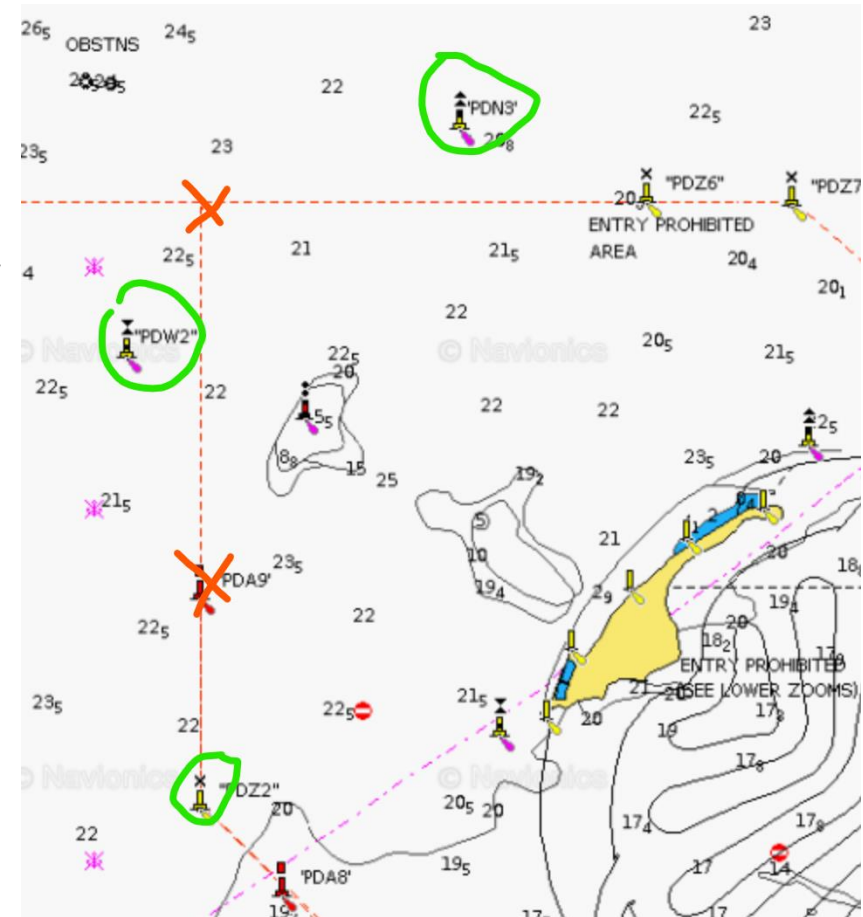
Palm Deira Marks

These marks may be out of date or labelled incorrectly on some charts.

PDZ 2, PDW3 and PDN5 have recently been surveyed and should be in the published locations.

For the purposes of the race there is no exclusion zone and you may obviously pass inside to round PDN5.

Please however be aware of the isolated danger/shallow area shown. This mark may be missing.



Additional Communication

- If there are any issues, please whatsapp or Call Alan on +971545093232