

Shorthanded Series – Keelboat and Multihull

Race Day 4 : 4th February 2024

1 start, all classes, 5-4-1-Go

All classes to start under flag class flag Oscar (No requirement to display course flag).

All communication VHF Channel 22

The Course

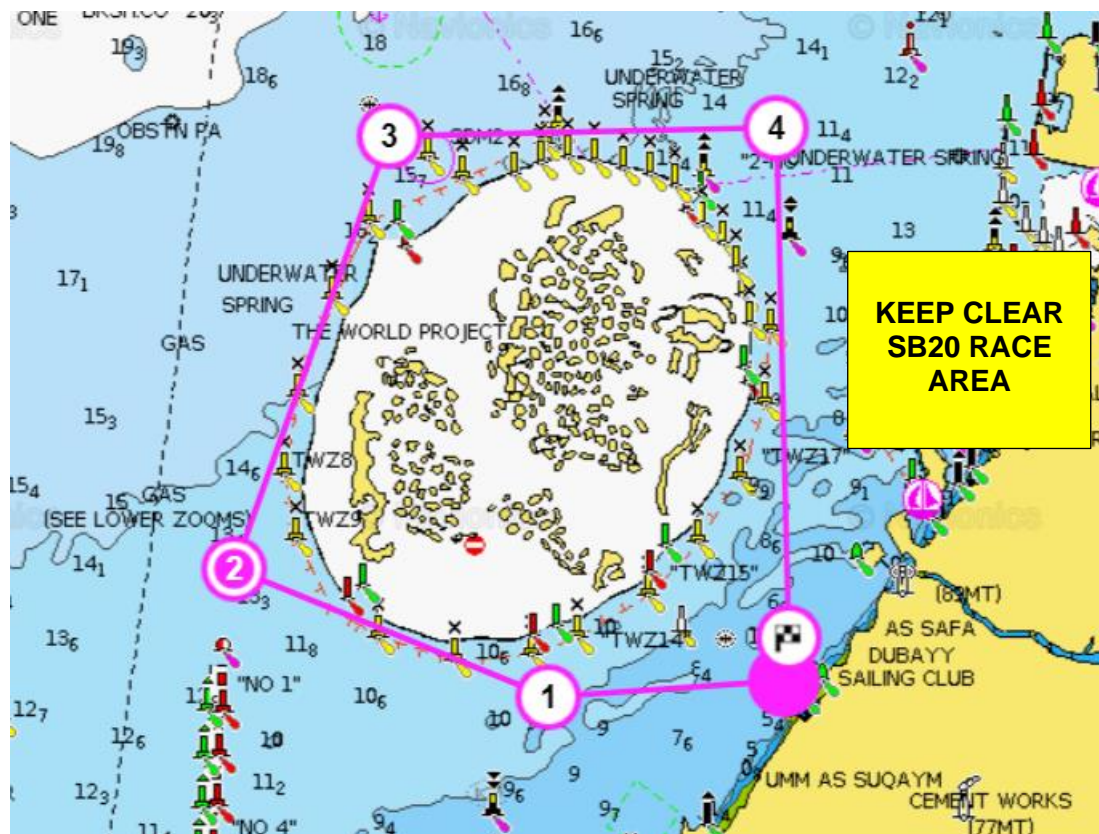
(All Classes)

Start [Committee Boat (S), Pin (P)] (Near Dosc STF Mark)

Bart Roberts (P)

World Islands (S)

Finish @ Club Line, N-S



Keep Clear of SB20 Race Course

Mark Information

Finish @ The 'Club Line'

This race will be finished at the 'Club Line'. It is likely there will be no finish boat so you will need to self-declare.

If there is finish boat flying a blue flag anchored at STF, this boat will take your finish time when you cross the line between the boat and the yellow special mark on the end of the breakwater.

Notice to Competitors #1 – Posted 04/04/2024

When no finish boat is present, competitors must take their own finish time using GPS time and send it to sailingadmin@doscuae.com within 30 minutes of finishing in the HH:MM:SS format.

The club line is a transit of the mobile phone mast (with red aviation light) and yellow special marker on the end of the breakwater (with yellow navigation light).

The club line extends 500m/0.27NM from the end of the breakwater and boats should start/finish within this distance. Laid inflatable STF marks the limit of the 500m/0.27NM and when laid, boats should start/finish within this mark, but the start line and finish line will be the transit, and finish times should be taken when the transit is crossed, irrespective of when the mark is passed.



'Club Line, N-S' denotes crossing the line from North to South.

'Club Line, S-N' denotes crossing the line from South to North.

Name	Latitude	Longitude
STF Laid Inflatable (When Laid) or Finish Boat (When Present)	25° 10.682'N	55° 12.403'E
Mobile Phone Mast (Red Aviation Strobe)	25° 10.502'N	55° 13.059'E
Yellow Special Mark on End of Breakwater (Yellow Nav Strobe)	25° 10.605'N	55° 12.687'E