



DOSC 24 Hour Challenge

6th Edition



Rally Race

23rd – 24th March 2024

Notice of Event Instructions ver.2 (10th March 2024)



The 24 Hour Challenge is an adventurous rally-race sailing event to encourage sailors to set sail for the horizon. It gives sailors a chance to sail beyond the confines of the race course and their normal coastal cruising grounds.

You decide your race route and strategy for the 24-hours with the aim of covering as many miles as possible during this time, using core sailing skills of skipper and crew like weather forecast interpretation, navigation, night sailing, route strategy, log keeping and tactics. Besides being offering an alternative to round-the-can racing and coastal day-cruising, this format is also a good way to get introduced to night sailing and watch plans etc. which is useful for offshore racing or longer distance cruising.

1. RULES

- a. Boats must comply with the International Rules for the Prevention of Collisions at Sea (IRPCS) at all times.
- b. All times given below are in Gulf Standard Time (GST).
- c. Boats must comply with circular dmca/mo/cir/001/2015 dated 9th March 2015 issued by the DMCA regarding use of lifejackets in Dubai waters (see Appendix B)

2. ELIGIBILITY & ENTRY

- a. This event is open for sail powered boats from DOSC and any other marina in Dubai.
- b. To enter contact the Sailing Department no later than **10:00AM on Friday 20th October 2023**. Email sailingadmin@doscuae.com and advise them of your:

- Yacht name
- Yacht type
- IRC TCC (if you have one) or NHC base TCF (if you know it)
- Total number of crew/passengers onboard
- Along with a copy of the front and back of valid boat registration card and signed Appendix F – Skipper safety declaration

Submissions from boats after this time may result in the Event Committee not being able to process a handicap in time, therefore making the boat ineligible for scoring.

3. FEES

- a. There will be no event fee.

4. SCHEDULE

- a. An event briefing will be held at DOSC [Longitude Classroom] at 18:30pm on Friday 20th October 2023.
- b. Event Start at **11:00 on Saturday 21st October 2023**.
- c. Event Finish at **11:00 on Sunday 22nd October 2023**.
- d. Event cut off at 12:00pm on Sunday 22nd October 2023. Boats finishing after this time are not eligible for prizes.
- e. Prize Giving at DOSC at [8:00pm] on Wednesday 1st November 2023



5. SAFETY EQUIPMENT

- a. Each boat shall have at least the minimum safety equipment detailed in Appendix F.
- b. Skippers shall sign the self-inspection declaration at Appendix F to indicate they have the minimum required equipment and that the equipment is in good working order. This is required to be submitted to DOSC prior to race start. Boats failing to submit the self-inspection declaration will not be permitted to start.

6. VENUE

- a. The venue: Dubai Offshore Sailing Club (DOSC)
- b. The sailing area: the coastal waters of Dubai, United Arab Emirates

7. THE COURSE

- a. The start shall be an upwind start between the two inflatable buoys approximately 0.5NM off the coast of DOSC. It is a fixed start time event; 11:00am GPS time for all participating boats. A DOSC committee boat will be in the vicinity and the following 'traffic light' start sequence will be applicable :

- 10min. before start Red Flag Up
- 5min. before start Red Flag Down – Orange Flag Up
- 1min before start Orange Flag down – Green Flag Up
- Start Green Flag down

Remember this event is under IRPCS so act appropriately.

- b. Appendix C (List of Marks) and C(1) shows a list of marks in the coastal waters of Dubai. Each skipper is responsible for selecting their own course according to the prevailing weather conditions and the particulars of their boat and crew.
- c. The selected course will take each participant from one of the listed marks to another listed mark. The marks can be 'rounded' in any particular order and each mark may be 'rounded' multiple times.
- d. As several of the marks are associated with restricted / exclusion zones, the definition of 'mark rounding', for the purposes of this Challenge, is when a boat sails within 0.1NM (185m) of that mark.
- e. If a mark is missing or out of position in an unsafe area, competitors shall record this in their log and make a 'rounding' of the published position in Appendix C.
- f. A mark may be left to port or starboard however yachts must remain on the 'safe' side of any exclusion zones at all times.
- g. Competitors must remain clear of all published national exclusion zones at all times except for the Palm Jumeirah exclusion zone which can be disregarded.
- h. Competitors should remain well clear of barges operating in the area and pass upwind of any



barge mooring buoys as they often have long floating lines streaming downwind.

- j. A yacht finishes when they pass through the DOSC Club Line, South to North, leaving the STF outer marker to port. Record this finish time in your Log Sheet. See Appendix G.

8. PENALTY SYSTEM

- a. IRPCS apply at all times. In addition, participants shall act with good sportsmanship towards all other participants and declare all race entries correctly at all times. Breaches of sportsmanship, the IRPCS or incorrect declarations of race entries, are to be raised with the Event Committee and shall be subject to arbitration.

9. SCORING

- a. A 'Time on Distance' handicap will be calculated for each yacht based on their NHC or IRC TCC (at the discretion of the Event Committee).
- b. Appendix D (Distance Table) shows the shortest safe navigable distance between any two possible pairs of marks. This distance shall be the recorded distance (on the Log Sheet) and not the actual distance a competitor was required to sail to navigate between the marks.
- c. Competitors shall record on the sheet provided at Appendix E (Log Sheet) details of the route sailed and shall total their own distance sailed on this sheet using the distances provided on the Distance Table.
- d. The List of Marks also shows the bonus miles associated with rounding certain marks. When rounding a given mark each competitor shall record the bonus miles for that mark in the allocated section of the Log Sheet. Competitors only score a bonus on the first time they round a particular mark during the 24 hours.
- e. Competitors will have 2NM deducted from their total distance for every 5 minutes (or part thereof) they exceed the 24 hour time limit for finishing.
- f. No miles recorded after the official finish time will be considered for scoring
- g. The total distance recorded on the Log Sheet (adjusted for penalty miles) will be used in conjunction with the elapsed sailing time, Time on Distance factor to calculate overall results.
- h. To facilitate fast scoring and timely prizegiving, competitors are requested to photograph their Log Sheet and email this to sailingadmin@doscuae.com within 30 minutes of their finish. Please submit the hard copy of the Log Sheet to the Sailing Department as soon as possible after this.

10. ENGINES

- a. The use of engines is allowed. When an engine is activated for the purpose of propulsion competitors shall record the time and log distance when starting and when stopping to use it for propulsion. Competitors shall receive 2NM of engine distance without penalty. This un-



penalized 2NM is primarily for the purpose of avoiding a potentially dangerous situation or entering and leaving a harbor/anchorage should the skippers choose to take a break from sailing or to change crew.

Any motored distance recorded over 2NM shall be deducted from an overall total in accordance with the following formula.

$(\text{Total distance under engine} - 2\text{NM}) \times 1.5 = \text{Engine Penalty in NM}$

11. CREW

- a. Competitors may change crew during the event however skippers must comply with Coast Guard regulations at all times and are responsible for notifying the Coast Guard of any change if relevant.

12. PRIZES

- a. Prizes will be awarded to the top 3 participants for highest overall miles recorded (incl. bonus miles and deductions for late penalty miles and adjusted for handicap).
- b. Other prizes may be awarded on the day at the discretion of the Event Committee.

13. DISCLAIMER OF LIABILITY

- a. Competitors participate in the 24 Hour Challenge entirely at their own risk. The organizing authority will not accept liability for material damage or personal injury or death sustained in conjunction with or prior to, during, or after the event.
- b. The ultimate decision on whether or not to participate remains the sole and inescapable responsibility of the owner or the owner's representative.

14. Use of Personal Data

- a. I, my crew and our support persons understand that the Organizing Authority (OA) will hold and use our personal data for the purpose of the event and the application of the rules. Further information can be found at Club Data Policy: <https://dosc.ae/privacy-policy/>
- b. By participating in this event, all Competitors automatically grant to the Organizing Authority (OA) and the event sponsors the right, in perpetuity, to make use, and show, at their discretion, any photography, audio and video recordings, and other reproductions of them made at the venue or on the water from the time of their arrival at the venue until their final departure, without compensation.

15. INSURANCE

- a. Each participating boat shall be insured with valid third-party liability insurance with adequate cover for this event.



16. EMERGENCIES

a. Any yacht experiencing difficulty should act in accordance with local requirements as determined by the issue.

They shall also notify the DOSC Racing Manager on +971 54 509 3232

17. FURTHER INFORMATION

a. For further information, please contact the DOSC Sailing Department on sailingadmin@doscuae.com or cruising@doscuae.com



Appendix A :DMCA circular regarding use of lifejackets in Dubai waters



GOVERNMENT OF DUBAI

Date: 09/03/2015

سلطة مدينة دبي الملاحة
DUBAI MARITIME CITY AUTHORITY



Ref: DMCA/MO/CIR/001/2015

استخدام ستر النجاة في مياه إمارة دبي Use of Lifejackets in Dubai Waters

Wearing lifejackets is **mandatory** in the following cases:

- 1- By children who are (10) years and below if they are outside the passengers cabins in recreational or tourist yachts sailing outside the inland waters.
- 2- By all passengers in open small boats sailing outside the inland waters.
- 3- By all passengers in case of any emergency that is without limitation (Bad weather, collision, fire, water entering the vessel) during sailing or within the marina.
- 4- By all jet-ski users and who participates in water sports of all kinds at all times.

To maintain your safety:

DMCA always recommends to wear lifejackets by children who are (10) years and below and adults who are poor in swimming when they are outside the passengers cabins or in open boats.

Inland waters:

Creek, Palms, marina and clubs, fishing ports, lakes, islands, commercial ports.

محمد علي البستاني
مدير إدارة العمليات البحرية
سلطة مدينة دبي الملاحة



ارتداء ستر النجاة يكون **الزامي** في الحالات التالية:

- 1- من قبل الصغار اللذين أعمارهم (10) سنوات فما دون إذا كانوا خارج صالات الركاب في اليخوت الترفيهية أو السياحة خلال الإبحار خارج المياه الداخلية.
- 2- من قبل جميع الركاب في القوارب الصغيرة المفتوحة خلال الإبحار خارج المياه الداخلية.
- 3- من قبل جميع الركاب في الحالات الطارئة وهي دونما حصر (سوء الأحوال الجوية، التصادم، الحريق، دخول المياه للوسيلة) خلال الإبحار أو داخل المرسى.
- 4- من قبل جميع مستخدمي الدراجات المائية بمختلف أنواعها وفي جميع الأوقات.

للمحافظة على سلامتكم:

توصي سلطة مدينة دبي الملاحة دائماً بارتداء ستر النجاة من قبل الصغار اللذين أعمارهم (10) سنوات فما دون والكبار اللذين لا يجيدون السباحة عند وجودهم خارج صالات الركاب أو في القوارب المفتوحة.

المياه الداخلية:

الخور، النخلات، المارينا والأندية البحرية، موانئ الصيد، البحيرات، الجزر، الموانئ التجارية.





Appendix C : 2022 List of Marks – v.1

Name	Position (WGS 84)	Bonus Miles	Type	Remarks
STF	25° 10.682 N 055° 12.403 E	0	Laid Inflatable	'STF' in table
Horseshoe WC	25° 13.076 N 055° 13.294 E	0	West cardinal	'HS WC' in table
DDW-1	25° 16.859 N 055° 14.114 E	0	Safe water mark	New mark
PDZ1	25° 18.524 N 055° 13.278 E	0	Virtual Mark	
PDWB	25° 21.001 N 055° 10.601 E	0	Yellow Weather Buoy	Not on Navionics
PDW3	25° 22.622'N 055° 10.356' E	2	West Cardinal	Labelled as PDW2 on Navionics
Dubai App	25° 18.523 N 055° 10.027 E	1	Safe water mark	Formerly Rashid
DHA	25° 10.834 N 055° 06.533 E	1	Safe water mark	
WINC	25° 16.085 N 055° 08.908 E	1	Virtual Mark	Mark Missing. North Cardinal on Navionics.
TWZ8	25° 12.714 N 055° 07.259 E	1	Virtual Mark	Mark Missing. Yellow Special Mark on Navionics.
TWZ12	25° 10.907 N 055° 09.091 E	0	Virtual Mark	Mark Missing. Yellow Special Mark on Navionics.
MB4	25° 14.342 N 055° 12.746 E	0	Yellow Mooring Buoy	Caution for moored vessels.
Sheikh's Gate	<u>Starboard</u> 25° 07.162 N 055° 09.276 E <u>Port</u> 25° 07.103 N 055° 09.347 E	0	Cross transit between Starboard and Port Marks	'SHK's Gate' in table
Power	25° 04.606 N 055° 05.832	4	Virtual Mark	
DHLS 05	25° 08.600 N 055° 06.290 E	4	Starboard channel mark	Green Channel Mark labelled as 'No 5' on Navionics- See App A1
DB1	25° 16.994 N 055° 03.677 E	4	North cardinal	



M1	25° 11.284 N 055° 11.589 E	0	Laid Inflatable	
PDS 1	25° 18.993 N 055° 16.594 E	4	Safe water mark	
DHLS03 *)	25° 09.511 N 055° 06.212 E	n/a	Starboard channel mark	Green Channel Mark labelled as 'No 3' on Navionics - See App A1
DHLP06 *)	25° 08.141 N 055° 06.438 E	n/a	Port channel mark	Red Channel Mark labelled as 'No 6' on Navionics - See App A1
DHLS09 *)	25° 06.784 N 055° .06.165 E	n/a	Starboard channel mark	Green Channel Mark labelled as 'No 9' on Navionics - See App A1
DHSE	25° 06.116 N 055° .06.208 E	4	Directional /Sector mark	Special purpose beacon/light on Navionics – See App A1

*) marks used for Bonus Run only, these are not included in Appendix B therefore

Bonus Runs (all marks listed in Appendix C & C(1))

Please note that for a Bonus Run to count – you must complete the Bonus Run sequence (a,b,c,...) without noting any other mark rounding's in your log sheet (from Appendix A) during the Bonus Run, if doing so, the Bonus Miles from the Bonus Run will be disregarding and only eligible mark distances and potential Mark Bonus Miles will be counted. No Mark Bonus Miles are to be recorded from marks eligible for bonus miles, during a Bonus Run, however in case these marks are rounded outside the bonus run, Mark Bonus Miles are counted for the first of such rounding's only. Bonus Miles from Bonus Run's will only be counted once.

Bonus runs cannot be combined with other point scoring.

Bonus Miles

1) The safety triangle

10nm

- a) DDW-1 (to starboard or port)
- b) Dubai App (to starboard or port)
- c) DHA (to starboard or port)
- d) DDW-1 (to starboard or port)



2) Top of the World and back

15nm

- a) DOSC STF (to starboard or port)
(round the World exclusion zone to starboard or port)
- b) DB1 (to starboard or port)
(round the World exclusion zone to starboard or port)
- c) DOSC STF (to starboard or port)





3) The Slalom

10nm

- a. DHA [miles] (to starboard)
- b. DHLS03 (to port)
- c. DHLP06 (to starboard)
- d. DHLS09 (to port)
- e. DHSE [miles] (to starboard)



4) On time for sundown [5:40pm]

10nm

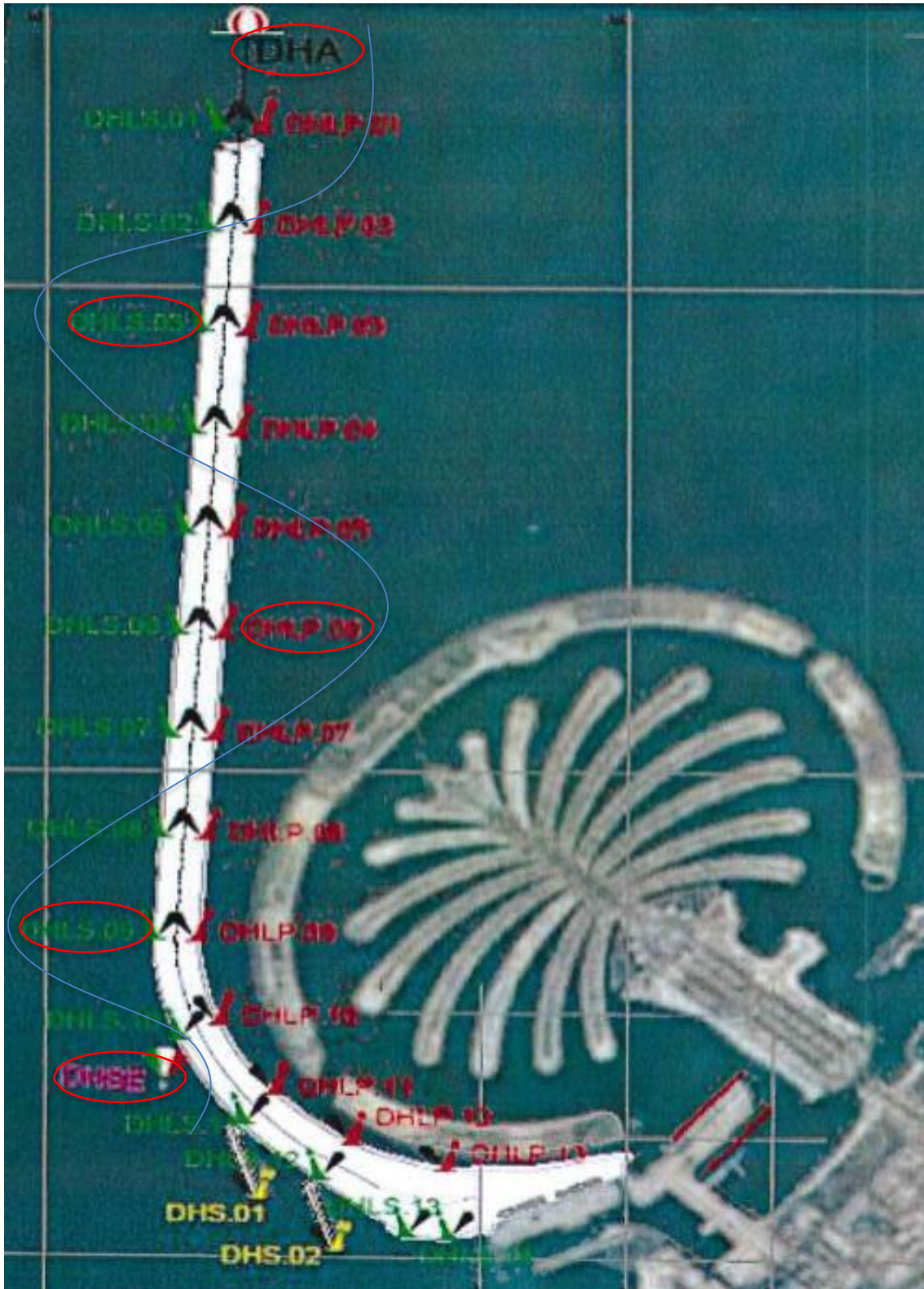
Rounding DHA (to starboard) between 5:30PM and 5:50PM on Saturday 29th October 2022. Bonus Run miles only awarded if mark is rounded within set time window.



Boats to note down on page 2 of Log Sheet (appendix E), any other boats sighted rounding mark at this time (DP no. / Sail no. / Boat Name)



Appendix C(1) – Dubai Harbor Approach – Mark Details [The Slalom Bonus Run]



Please keep look-out for any traffic in the marked channel



Marker Symbol	Marker Ref.	Marker Type	Easting	Northing	Latitude	Longitude	Light Characteristic
✓	DHLS 01	Type B	477179.40	2785305.71	25.173618°	55.106956°	FL55 (1.20 ON, 3.80 OFF), GREEN GPS-SYNC, AIS
✓	DHLS 02		477125.11	2784469.29	25.166066°	55.106432°	
✓	DHLS 03		477070.81	2783632.86	25.158515°	55.105907°	
✓	DHLS 04		477016.51	2782796.44	25.150964°	55.105383°	
✓	DHLS 05		476962.21	2781960.02	25.143412°	55.104858°	
✓	DHLS 06		476907.92	2781123.59	25.135861°	55.104334°	
✓	DHLS 07		476853.62	2780287.17	25.128309°	55.103809°	
✓	DHLS 08		476799.32	2779450.75	25.120758°	55.103285°	
✓	DHLS 09		476744.07	2778599.56	25.113073°	55.102752°	
✓	DHLS 10		476690.12	2777779.43	25.105672°	55.104511°	
✓	DHLS 11		477367.64	2777082.87	25.099391°	55.108959°	
✓	DHLS 12		477887.00	2776639.16	25.095393°	55.114115°	
✓	DHLS 13		478483.140	2776170.660	25.091173°	55.120032°	
✓	DHLS 14		478766.140	2776146.310	25.090957°	55.122838°	
✓	DHLP 01	Type B	477476.77	2785286.28	25.173447°	55.109926°	FL55 (1.20 ON, 3.80 OFF), RED GPS-SYNC, AIS
✓	DHLP 02		477424.48	2784449.85	25.165895°	55.109402°	
✓	DHLP 03		477370.18	2783613.43	25.158344°	55.108877°	
✓	DHLP 04		477315.68	2782777.01	25.150793°	55.108352°	
✓	DHLP 05		477261.58	2781940.58	25.143241°	55.107828°	
✓	DHLP 06		477207.29	2781104.16	25.135690°	55.107303°	
✓	DHLP 07		477152.99	2780267.74	25.128139°	55.106778°	
✓	DHLP 08		477098.69	2779431.31	25.120587°	55.106254°	
✓	DHLP 09		477044.39	2778594.89	25.113036°	55.105729°	
✓	DHLP 10		477193.39	2777903.82	25.108799°	55.107218°	
✓	DHLP 11		477582.69	2777322.13	25.101554°	55.111087°	
✓	DHLP 12		478112.57	2776931.03	25.098031°	55.116347°	
✓	DHLP 13		478759.40	2776712.06	25.096064°	55.122763°	
✓	DHS 01	Type B	477471.24	2776453.72	25.093713°	55.109997°	QR FL YELLOW GPS-SYNC
✓	DHS 02		477997.49	2776023.86	25.089841°	55.115221°	
⊘	DHA	Type A	477380.91	2786094.31	25.180740°	55.108942°	ISO 4S (2S ON, 2S OFF), WHITE GPS-SYNC, AIS
Y	DHSE	Type C	476814.26	2777365.35	25.101933°	55.103469°	1 DEGREE GREEN(ISO 4S); 2 DEGREE WHITE(FIXED); & 1 DEGREE RED (ISO 4S) WITH AIS



Appendix D: Distance Table – ver 1

Mark	STF	HS WC	DDW-1	PDZ1	PDWB	PDW3	Dubai App	DHA	WINC	TWZ 8	TWZ 12	MB4	SHK's Gate	Power	DHLS 05	DB 1	M1	PDS1
HS WC	2.5																	
DDW-1	6.3	3.8																
PDZ1	7.9	5.3	1.8															
PDWB	10	7.4	4.6	2.9														
PDW3	13.3	11	8	6.3	3.4													
Dubai App	8.5	6.2	4.1	3	2.2	5.4												
DHA	5.6	6.9	10.9	10.8	10.5	13.6	8.4											
WINC	8.5	5.8	4.8	4.6	4.7	8	2.6	5.6										
TWZ 8	6.4	7.7	9.1	8.7	8.5	11.6	6.4	2	4.1									
TWZ 12	3.4	4.5	8.4	9.7	11.6	14.7	9.5	2.3	7.2	2.9								
MB4	3.5	1.2	3.1	5.8	6.5	9.8	5	8	4.9	8.4	5.2							
SHK's Gate	4.8	7.0	11.0	12.3	14.5	17.8	12.8	4.7	9.8	6.0	3.9	7.9						
Power	9.7	11.4	15	17	17	20	14.7	6.3	12.4	8.2	7.1	12.1	7.5					
DHLS 05	6.2	7.8	11.4	12.9	12.9	15.9	10.7	2.2	8.1	4.2	3.4	3.6	4.1	4				
DB 1	11.5	10.9	9.4	8.8	7.5	9.6	6	6.6	4.8	5.3	8.1	9.7	11.6	12.5	8.7			
M1	1.3	2.3	6.0	7.5	9.5	12.9	8.1	4.7	7.1	5.5	2.3	3.2	4.8	8.8	5.4	10.8		
PDS 1	9.0	6.6	3.0	3.5	6.3	9.7	6.4	13.8	7.5	11.2	11.4	6.1	14.0	17.8	14.6	12.3	8.9	
DHSE	7.9	9.7	13.6	15.0	15.4	18.5	13.1	4.7	10.4	6.7	5.5	10.5	7.1	1.6	2.5	11.0	7.4	16.5



Log Sheet continued

Boat Name:

Sail Number:

Skippers Name:

Contact Number:

We used our Engine!

Time Started	Position Started (Lat Long)	Time Ended	Position Ended (Lat Long)	Distance (NM)	Running Total of Engine Miles

We saw the following boat(s) complete 4) 'On time for sundown' Bonus Run mark rounding at DHA :

Boat Name	Boat Reg.No.	Boat Sail No.



Appendix F - Safety Declaration

Boat Name:

Sail Number:

Mandatory Safety equipment

- Bilge Pump
- 2 Buckets
- Tow Line
- Heaving Line
- Anchor, Chain and Warp (sufficient size and holding for vessel)
- Navigation Lights
- Secondary Navigation Lights
- Life jackets: 1 per crew and properly serviced
- Safety / Clip-on line
- Jack stays
- Secondary Form of Propulsion (inboard or outboard engine with sufficient fuel for min. 2 hours of motoring)
- VHF Radio
- Mobile Phone x 2 (remember chargers)
- Strong Torch with Spare Batteries
- Soft Wood Bungs
- Fire Extinguisher(s)
- First Aid Kit and Manual
- Fog Horn
- 4 Distress Flares
- Lifebuoy
- Cockpit safety knife
- Radar Reflector

I declare the boat is seaworthy, duly registered and is adequately covered by insurance.

I have inspected my vessel and confirmed I am carrying all of the equipment in the above list and that the equipment is in good working order.

I acknowledge and agree that I enter this event and sail entirely at my own risk as owner/skipper of the boat and that ultimate decision on whether or not to participate remains the sole and inescapable responsibility of the owner or the owner's representative.

Skippers Name:

Contact Number:

Skippers Signature:

Date:



Appendix G – Club Line

Some races may be started and or finished at the 'Club Line'.

If there is finish boat flying a blue flag anchored at STF, this boat will take your finish time when you cross the line between the boat the yellow special mark.

When no finish boat is present, competitors must take their own finish time using GPS time and send it to sailingadmin@doscuae.com within 30 minutes of finishing in the HH:MM:SS format.

The club line is a transit of the mobile phone mast (with red aviation light) and yellow special marker on the end of the breakwater (with yellow navigation light).

The club line extends 500m/0.27NM from the end of the breakwater and boats should start/finish within this distance. Laid inflatable STF marks the limit of the 500m/0.27NM and when laid, boats should start/finish within this mark, but the start line and finish line will be the transit, and finish times should be taken when the transit is crossed, irrespective of when the mark is passed.



'Club Line, N-S' denotes crossing the line from North to South.

'Club Line, S-N' denotes crossing the line from South to North.

Name	Latitude	Longitude
STF Laid Inflatable	25° 10.682'N	55° 12.403'E
Mobile Phone Mast (Red Aviation Strobe)	25° 10.502'N	55° 13.059'E
Yellow Special Mark on End of Breakwater (Yellow Nav Strobe)	25° 10.605'N	55° 12.687'E