



**Offshore Race 3 – DOSC to RYCRAK**  
**29<sup>th</sup> March 2024**



**Full Course (80NM) – Start 1700hrs**

Start @ Committee Boat Start

SP (P)

Start Pin (P)

HM (S)

FWJ (S)

FWR (P)

FWJ (P)

Finish @ RAK Line, N-S

**Junior Course (57NM) – Start 1700hrs**

Start @ Committee Boat Start

SP (P)

Start Pin (P)

HM (S)

FWJ (S)

Finish @ RAK Line, N-S

**Start boat will be using flag Oscar for all boats. There is no requirement to fly a class flag.**

**If any mark is missing (not visible within 100m of its given position), then the mark should be considered virtual and the GPS coordinate should be laid on the given side. Any missing marks should be declared with your finish time.**

**Committee boat will be using VHF Channel 08.**

**Mark Information**

Abbreviation	Name	Mark Type	Lat	Long
<b>START</b>	<b>Start at Committee Boat</b>			
SP	South Pacific	Laid Inflatable	25° 10.300'N	55° 9.095'E
Start Pin	<i>Same Location as Start</i>			
HM	Hamriyah	Safe Water Mark	25° 32.191'N	55° 26.022'E
FWJ	Fairway Jazeera	Safe Water Mark	25° 44.993'N	55° 46.730'E
FWR	Fairway RAK	Safe Water Mark	25° 50.499'N	55° 56.051'E
FWJ	Fairway Jazeera	Safe Water Mark	25° 44.993'N	55° 46.730'E
<b>FINISH</b>	<b>Finish at RAK Line, N-S</b>			

## Finish @ the 'RAK Line'

This race will be finished at the 'RAK Line'.

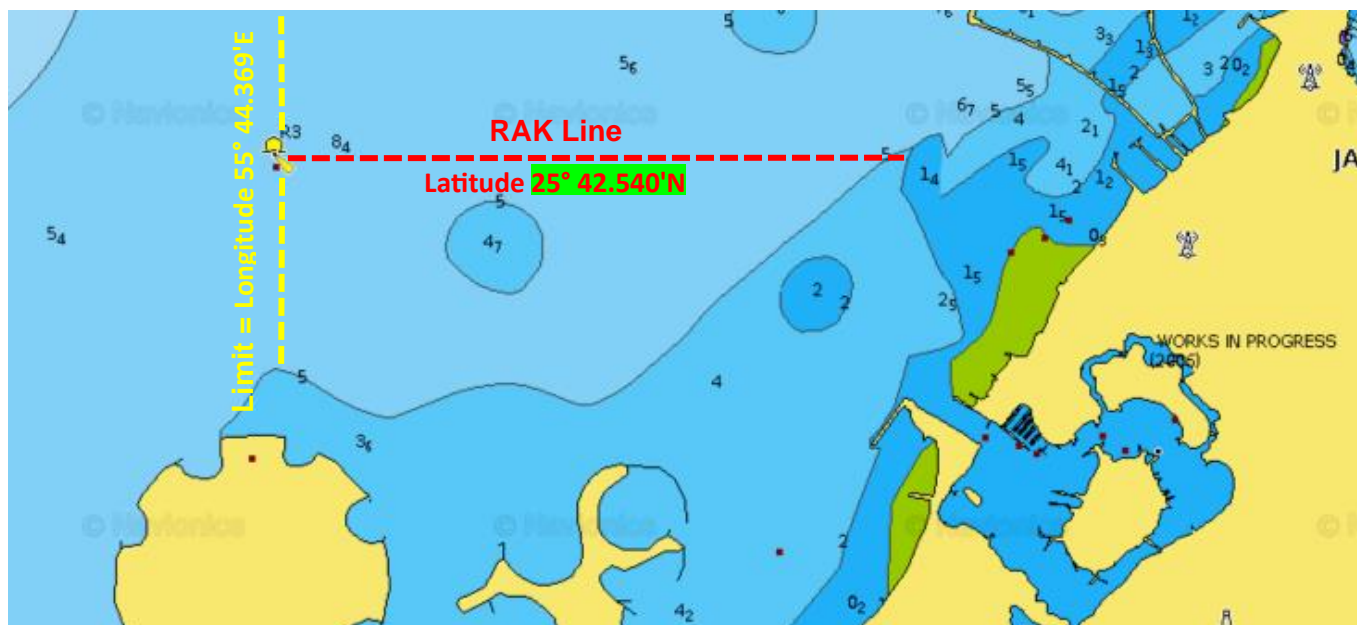
The 'RAK Line' is a line of latitude **25° 42.540'N** bounded by mark R3 on the west and the shore/land on the east.

The 'RAK Line' extends from R3 due east to the shore. Boats should finish to the East of R3 but finish times should be taken when Latitude **25° 42.540'N** is crossed, irrespective of when R3 is passed.

If R3 is not present, boats should finish to the east of Longitude 55° 44.369'E and take their times when Latitude 25° **42.540'N** is crossed.

Competitors must take their own finish time using GPS time and send it to [sailingadmin@doscuae.com](mailto:sailingadmin@doscuae.com) within 60 minutes of finishing in the HH:MM:SS format also attaching a photo of their GPS position/finishing time.

**Watch for shallow areas when approaching the finish – you are responsible for your own navigation.**



'RAK Line, N-S' denotes crossing the line from North to South.

'RAK Line, S-N' denotes crossing the line from South to North.

Name	Latitude	Longitude
R3 (Yellow Special Mark)	<b>25° 42.540'N</b>	55° 44.369'E

**After you have finished, please refer to separate document for instructions prior to entering the marina. Watch for the shallow areas.**

