



**AGMC**



DUBAI OFFSHORE  
SAILING CLUB  
1974 - 2024



# AGMC Keelboat Commodores Cup

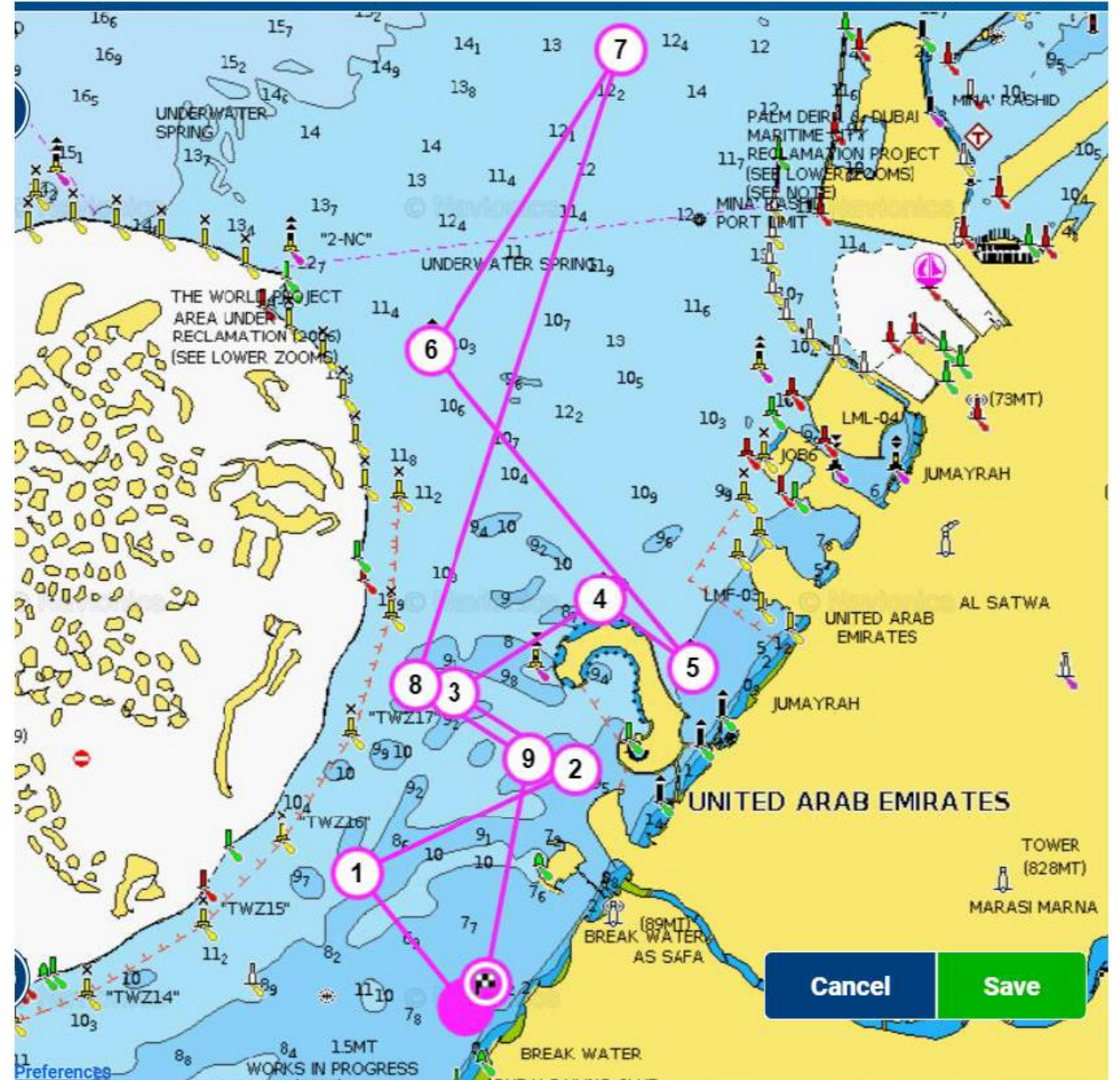
Coastal Race 16<sup>th</sup> March

The Course

# IRC Division 1 & 2 Multis

(16NM)

\* For Illustration  
purposes only



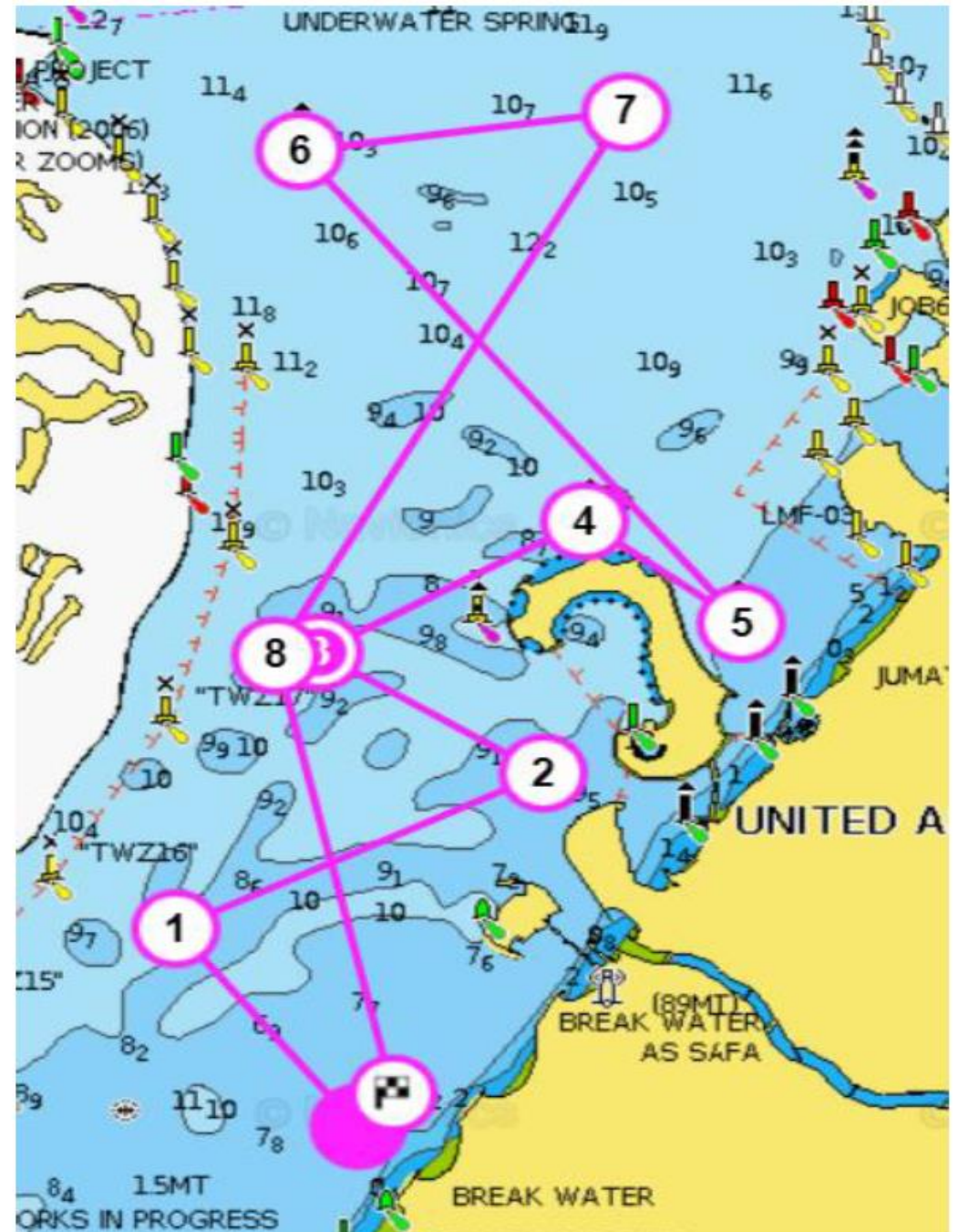
# IRC Division 1 & 2, Multis

Mark #	Abbreviation	Name	Rounding	Mark Type	Lat	Long
	S	Start	Committee Vessel & Start Pin	Start Line	1.5 N of DOSC	
1	M	Mark One	Starboard	Laid Inflatable	Directly Upwind	
2	BG	Bulgari Bay	Port	Yellow Special Mark	25° 12.550'N	55° 13.372'E
3	NCAP	NCAP	Starboard	Laid Inflatable	25° 12.933'N	55° 12.660'E
4	HSNC	Horseshoe North Cardinal	Starboard	North Cardinal	25° 13.473'N	55° 13.824'E
5	HSEC	Horseshore East Cardinal	Port	East Cardinal	25° 13.058'N	55° 14.430'E
6	1EC	1EC	Starboard	Laid Inflatable	25° 15.010'N	55° 12.723'E
7	DDW1	Dry Docks World 1	Starboard	Safe Water Mark	25° 16.850'N	55° 14.104'E
8	NCAP	NCAP	Port	Laid Inflatable	25° 12.933'N	55° 12.660'E
9	BG	Bulgari Bay	Starboard	Yellow Special Mark	25° 12.550'N	55° 13.372'E
	F	Finish	Finish between RC and Inflatable mark		Same position as the Start line	

IRC Division 3, IRC  
Cruiser, NHC

(16NM)

\* For Illustration  
purposes only



# IRC Division 3, IRC Cruiser, NHC

Mark #	Abbreviation	Name	Rounding	Mark Type	Lat	Long
	S	Start	Committee Vessel & Start Pin	Start Line	1.5 N of DOSC	
1	M	Mark One	Starboard	Laid Inflatable	Directly Upwind	
2	BG	Bulgari Bay	Port	Yellow Special Mark	25° 12.550'N	55° 13.372'E
3	NCAP	NCAP	Starboard	Laid Inflatable	25° 12.933'N	55° 12.660'E
4	HSNC	Horseshoe North Cardinal	Starboard	North Cardinal	25° 13.473'N	55° 13.824'E
5	HSEC	Horseshoe East Cardinal	Port	East Cardinal	25° 13.058'N	55° 14.430'E
6	1EC	1EC	Starboard	Laid Inflatable	25° 15.010'N	55° 12.723'E
7	UN	Union	Starboard	Yellow Special Mark	25° 15.171'N	55° 14.027'E
8	NCAP	NCAP	Port	Laid Inflatable	25° 12.933'N	55° 12.660'E
	F	Finish	Finish between RC and Inflatable mark		Same position as the Start line	



# Shortening the Course

- The course may be shortened at any mark of the course.
- If the committee boat is next to a mark flying S flag, then you will be finishing at that mark. The finish will be between the mark and the boat. The mark should be rounded in the normal direction with the boat on the other side.

