

**Shorthanded Series – Keelboat and Multihull**

**Race Day 2: 17th November 2024**

1 start, all classes, 5-4-1-Go

All classes to start under class flag Oscar (No requirement to display course flag).

**All communication VHF Channel 08**

**The Course for IRC A, B, Multihull, SB20 OD & Club Class.**

Start [Committee Boat (S), Pin (P)] (Near Dosc STF Mark)

W14 (P)

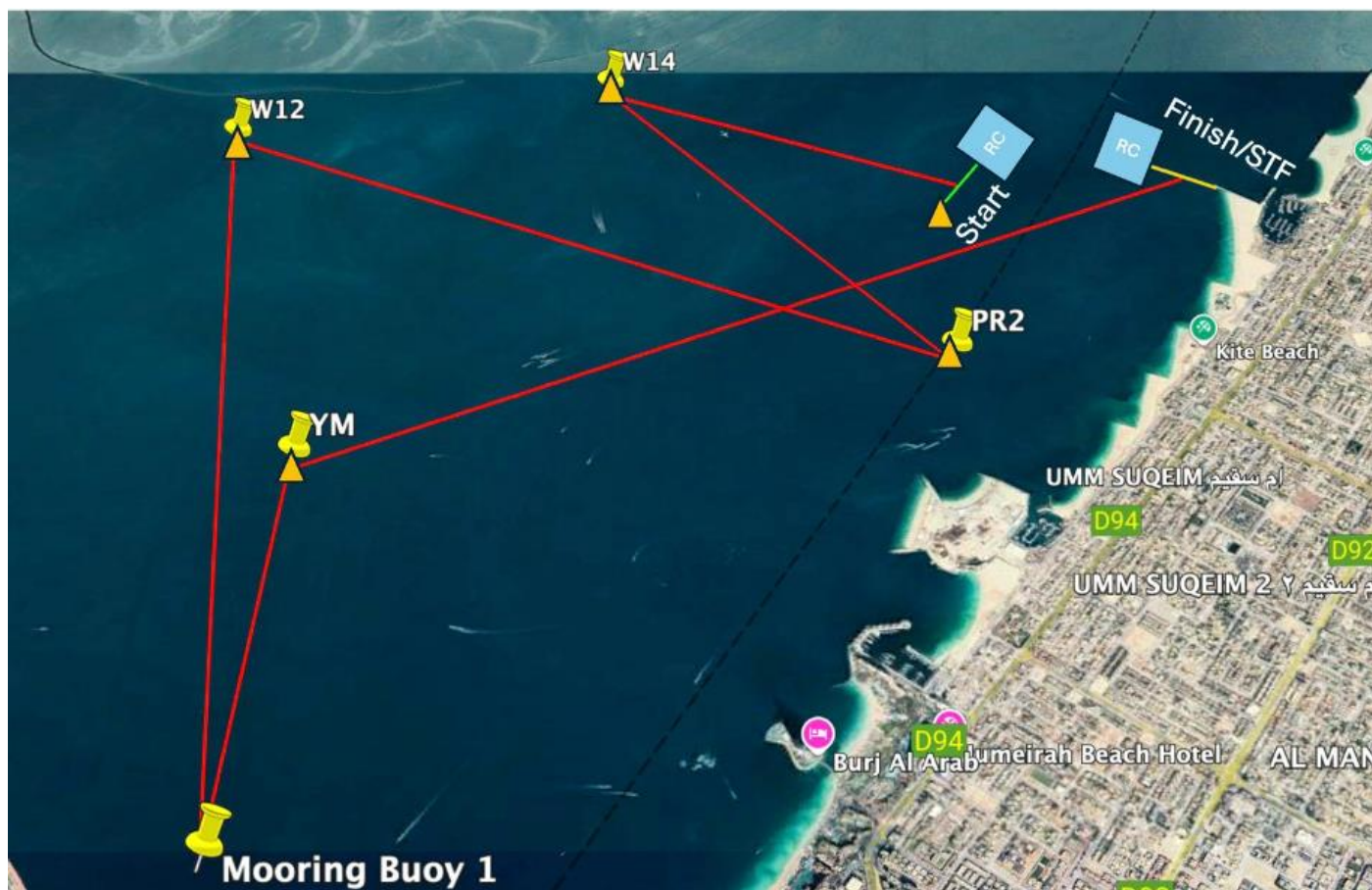
PR 2 (S)

W12 (P)

MB1 (P)

YM (S)

Finish @ Club Line, S-N



**\*Diagram is for illustration purposes only**

### Mark Information

Abbreviation	Name	Mark Type	Lat	Long
W14	World 14	Laid Inflatable	25° 11.041'N	55° 10.476'E
PR2	Pursuit Race 2	Laid Inflatable	25° 9.790'N	55° 11.653'E
W12	World 12	Laid Inflatable	25° 10.782'N	55° 9.118'E
MB1	Mooring Buoy 1	Fixed Mooring Buoy	25° 8.140'N	55° 9.524'E
YM	Yachts and More	Laid Inflatable	25° 9.378'N	55° 9.554'E

### Finish @ The 'Club Line'

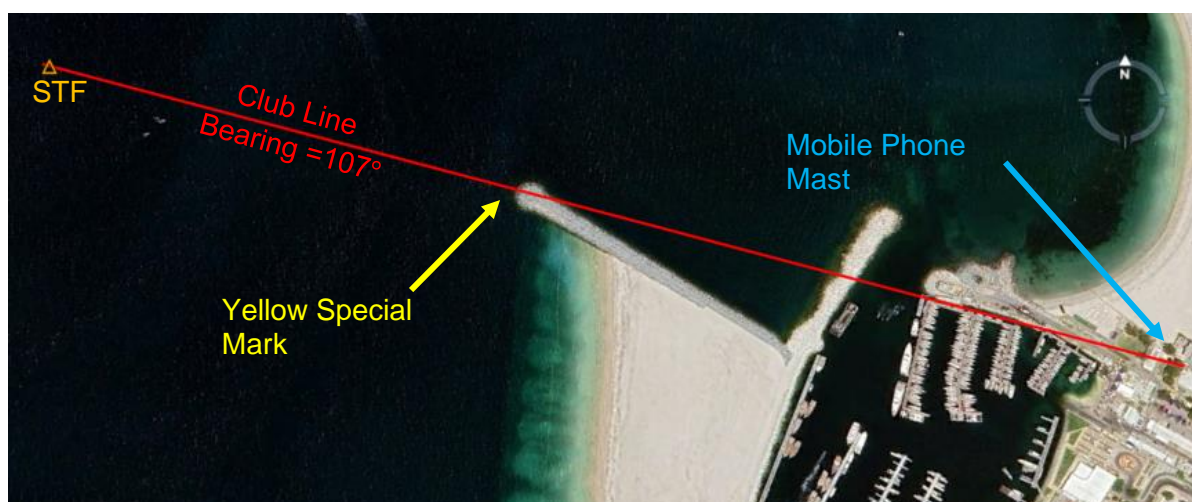
This race will be finished at the 'Club Line'. It is likely there will be no finish boat so you will need to self-declare.

If there is finish boat flying a blue flag anchored at STF, this boat will take your finish time when you cross the line between the boat and the yellow special mark on the end of the breakwater.

When no finish boat is present, competitors must take their own finish time using GPS time and send it to [sailingadmin@doscuae.com](mailto:sailingadmin@doscuae.com) within 30 minutes of finishing in the HH:MM:SS format.

The club line is a transit of the mobile phone mast (with red aviation light) and yellow special marker on the end of the breakwater (with yellow navigation light).

The club line extends 500m/0.27NM from the end of the breakwater and boats should start/finish within this distance. Laid inflatable STF marks the limit of the 500m/0.27NM and when laid, boats should start/finish within this mark, but the start line and finish line will be the transit, and finish times should be taken when the transit is crossed, irrespective of when the mark is passed.



'Club Line, N-S' denotes crossing the line from North to South.

'Club Line, S-N' denotes crossing the line from South to North.

Name	Latitude	Longitude
STF Laid Inflatable (When Laid) or Finish Boat (When Present)	25° 10.682'N	55° 12.403'E
Mobile Phone Mast (Red Aviation Strobe)	25° 10.502'N	55° 13.059'E
Yellow Special Mark on End of Breakwater (Yellow Nav Strobe)	25° 10.605'N	55° 12.687'E