

# Bill Nelson Offshore Race & Rally

Competitors Briefing: 8pm, 27<sup>th</sup> November, The Loft

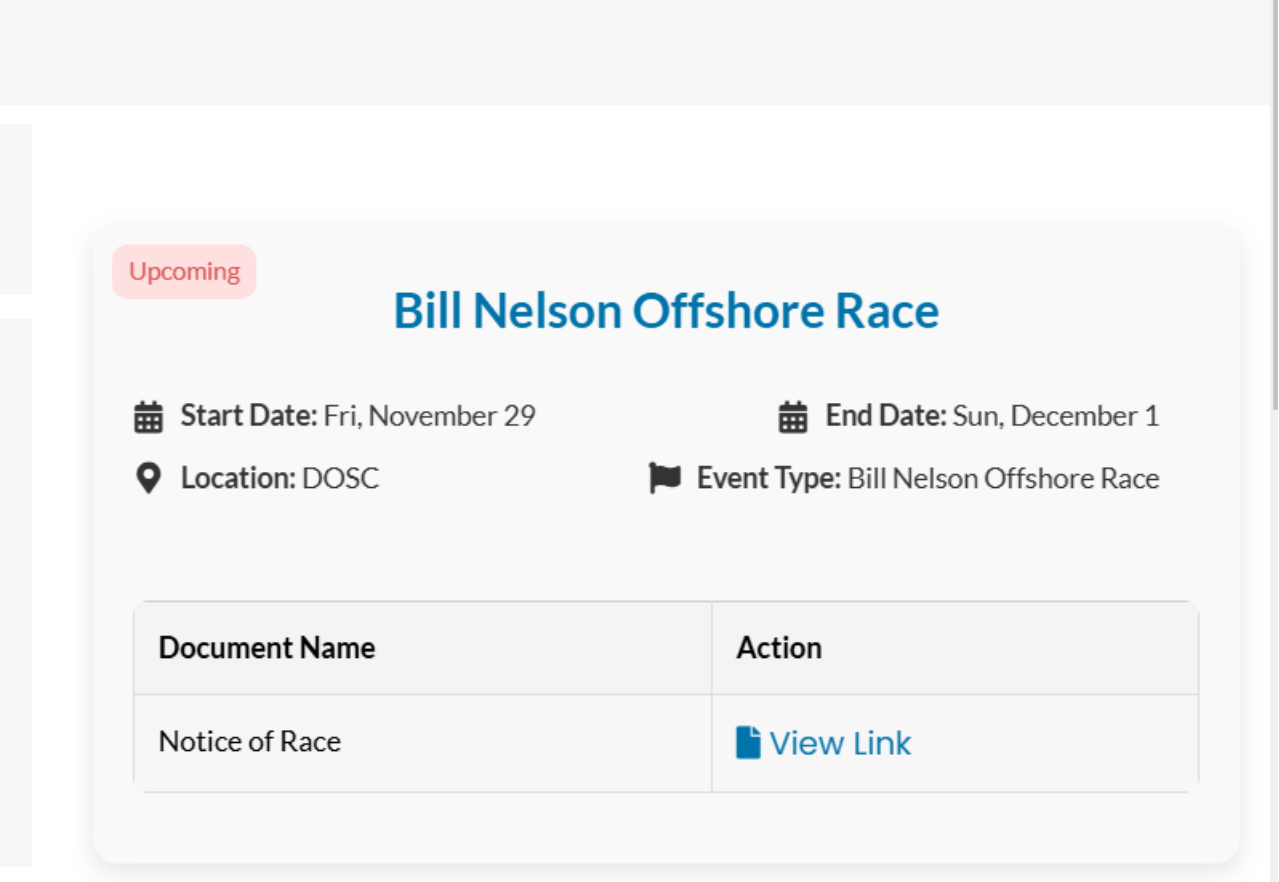
# Race Docs

Not CAT 3  
Life raft mandatory


Event Calendar page is the official  
Notice Board

Sailing Instructions will  
be published Thursday  
28<sup>th</sup> by 1700

Course to be published  
by Thursday 17:00pm



The screenshot shows a digital event card for the "Bill Nelson Offshore Race". At the top left, there is a pink "Upcoming" badge. The title "Bill Nelson Offshore Race" is displayed in a large blue font. Below the title, the start date is "Fri, November 29" and the end date is "Sun, December 1". The location is listed as "DOSC" and the event type is "Bill Nelson Offshore Race". At the bottom, there is a table with two columns: "Document Name" and "Action". The table contains one row with "Notice of Race" in the first column and a blue "View Link" icon and text in the second column.

Document Name	Action
Notice of Race	 <a href="#">View Link</a>

# Rules

- Competitors entering the race must carry a Life raft – failure to do so shall result in a score of DNE without hearing.
- Adequate Personal flotation devices with lights shall be carried for each person on board. Tethers and spray hoods are strongly recommended for each PFD.
- Between Sunrise and Sunset, the event will be governed by the rules as defined in the Racing Rules of Sailing (RRS).
- Between Sunset and Sunrise the event will be governed by the rules as defined in the International Regulations for Prevention of Collisions At Sea (IRPCS). This supersedes NOR 1.3.

# START

- Start Line between a Rib (Blue Whale) and Inflatable Pin Mark close to DOSC
- Upwind start with committee boat to Starboard / Pin to Port (Blue Whale)
- Combined Start for all classes
- Class Flag OSCAR will be used to start all classes.
- Please listen on VHF Ch.8 for sound signals/instructions.
- OCS Boats may be announced on VHF Channel 08.
- Warning Signal not before 16:55hrs.
- Start not before 17:00hrs.

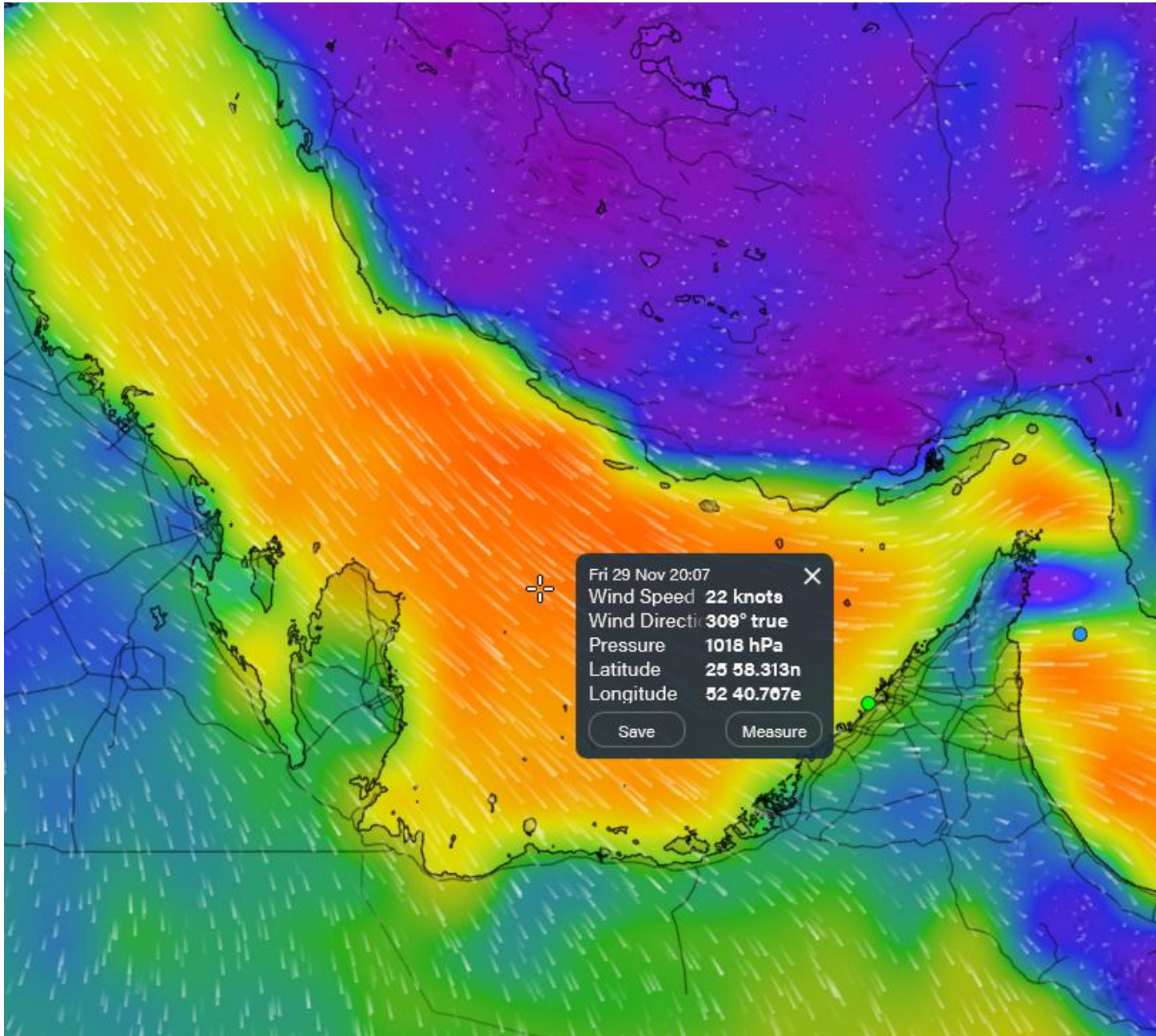
# Finish

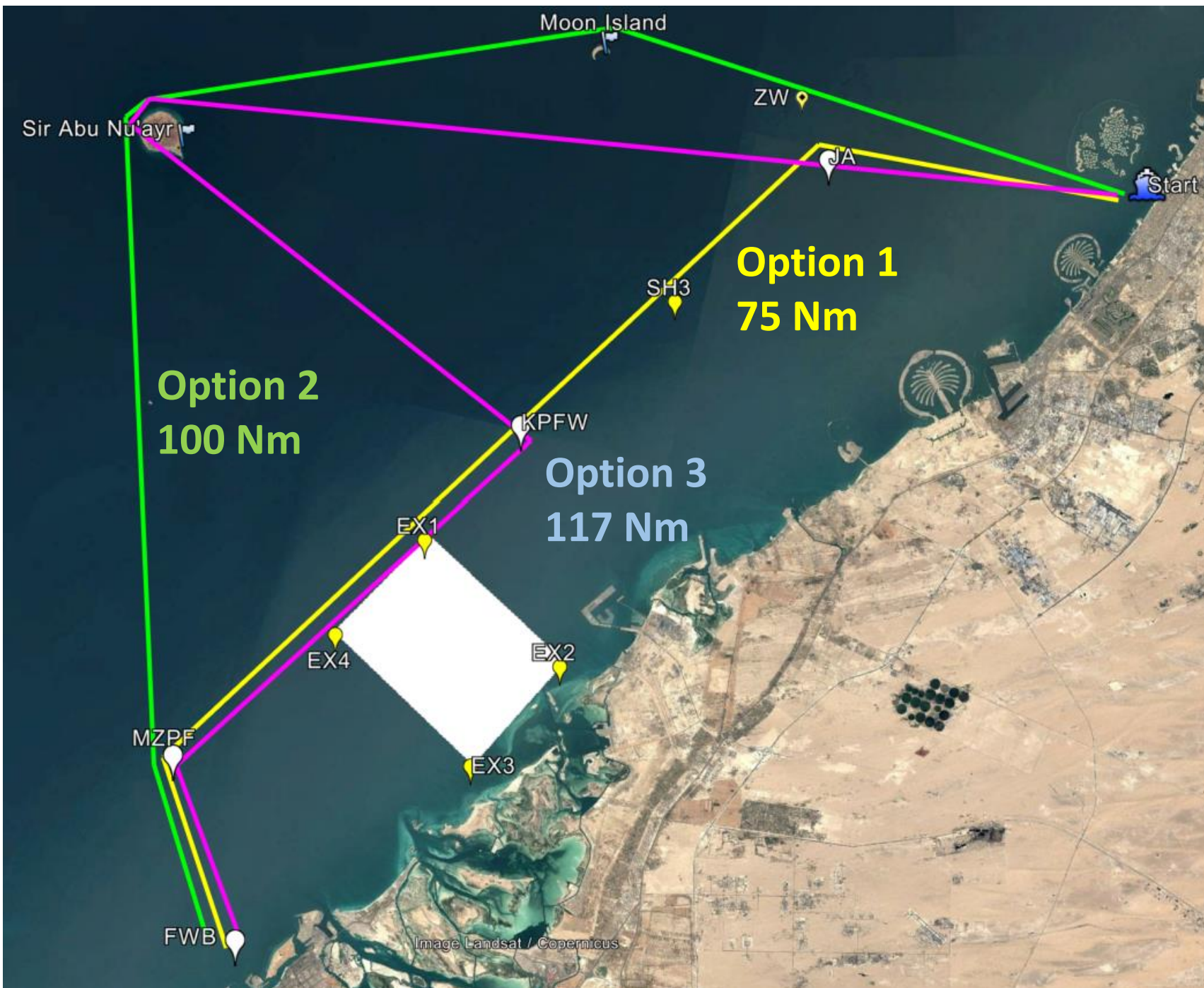
Will be self declaration.

Email: [sailingadmin@doscuae.com](mailto:sailingadmin@doscuae.com)

Please submit finish time at the earliest opportunity

# Forecast





Option 1  
 13 hours for First 31.7 Polars  
 Finish at 0600hrs approx.  
 30% up, 70% reach at 60TWA

Option 2  
 20 hours for First 31.7 polars finish  
 at 1300hrs approx.  
 70% up, 20% reach, 10% down

Option 3  
 22hours for First 31.7 polars  
 Finish at 1500hrs approx.  
 60% up, 20% reach, 20% down

Option 4 (Moon Island)  
 16 hours  
 Finish at 0900hrs approx.  
 50% upwind 50% reach



## Marks

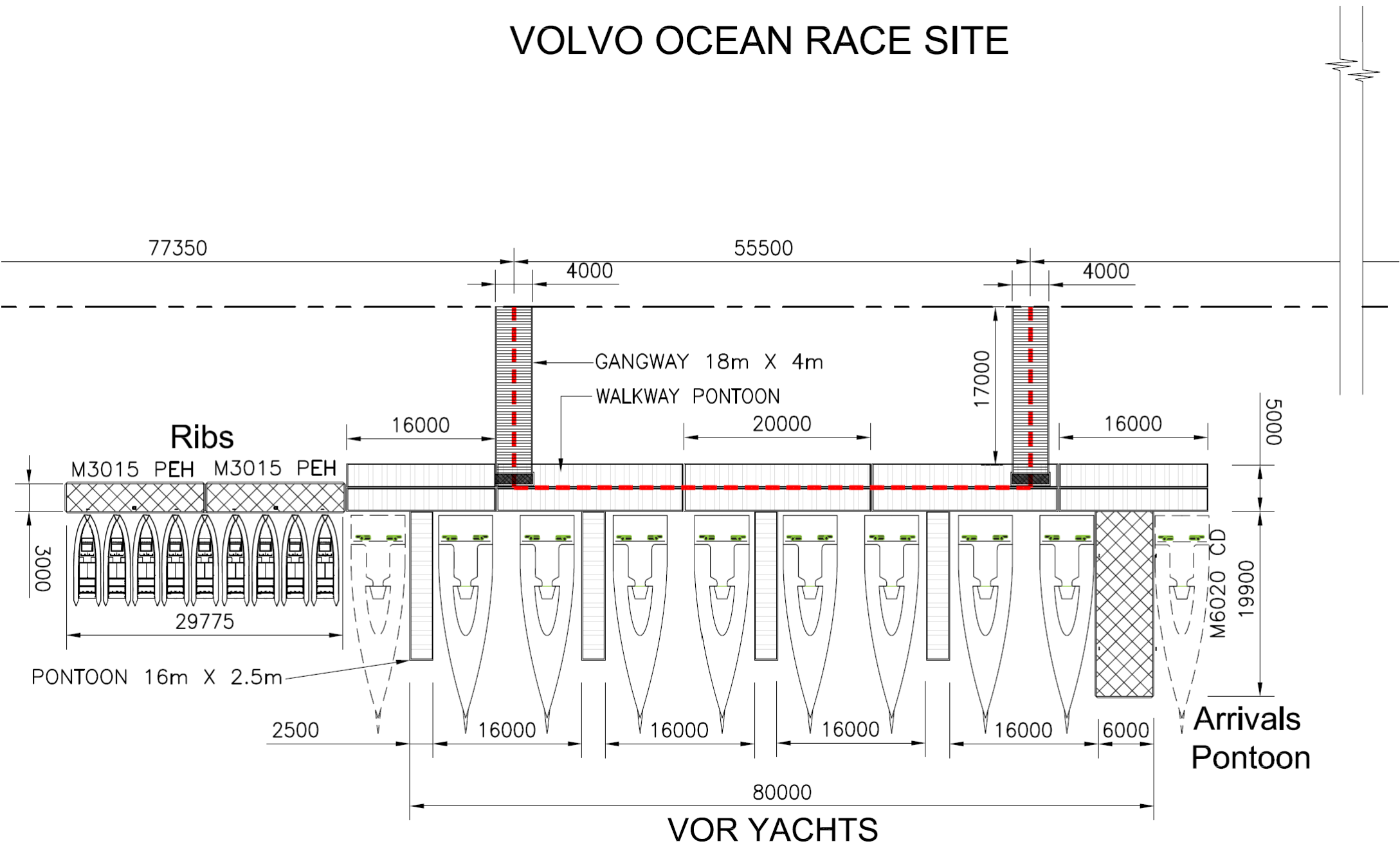
MOON	Moon Island	Island (CAUTION)	25° 18.262'N	54° 40.022'E	APPROX LOCATION - ISLAND - CAUTION LAND
SAN	Sir Aby Nair	Island (CAUTION)	25° 13.167'N	54° 14.660'E	APPROX LOCATION - ISLAND - CAUTION LAND
MZPF	Mina Zayed Port Fairway	Safe Water Mark	24° 39.264'N	54° 14.289'E	Navionics
FWB	Fairway Buoy	Safe Water Mark	24° 29.528'N	54° 18.028'E	Navionics
F1	F1	Virtual	24° 33.820'N	54° 13.972'E	There may be a mark present, but please consider virtual.
KPFW	Khalifa Port Fairway	Safe Water Mark	24° 56.789'N	54° 34.689'E	Navionics
JA	Jebel Ali	Safe Water Mark	25° 11.163'N	54° 53.092'E	Navionics
ZW	Zainab Wreck Mark	North Cardinal	25° 15.096'N	54° 51.538'E	Navionics
SH3	Sahar 3	Yellow Special Mark	25° 3.835'N	54° 43.852'E	Navionics
EX1	Exclusion Zone '1'	Yellow Special Mark	24°51.0768'N	54°29.008'E	Navionics
EX4	Exclusion Zone '4'	Yellow Special Mark	24°46.034'N	54°23.765'E	Navionics
EX2	Exclusion Zone '2'	Yellow Special Mark	24° 44.338'N	54° 36.980'E	Navionics
EX3	Exclusion Zone '3'	Yellow Special Mark	24° 39.071'N	54° 31.739'E	Navionics
PJAZ7	Palm Jebel Ali Zone 7	Yellow Special Mark	25° 4.021'N	54° 50.602'E	Navionics - Top of Palm Jebel Ali Exclusion Zone



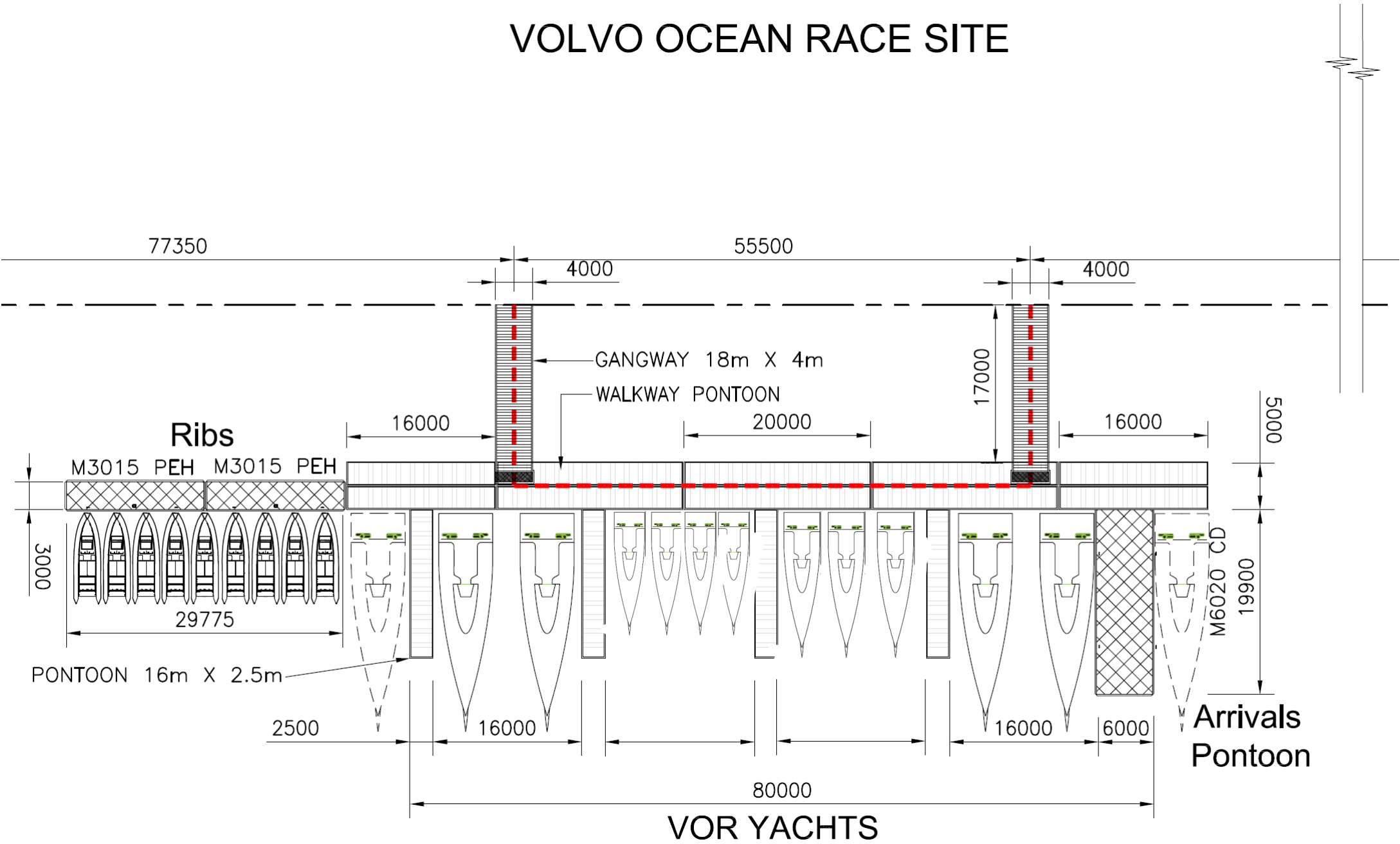
Image © 2024 Airbus



# VOLVO OCEAN RACE SITE



# VOLVO OCEAN RACE SITE





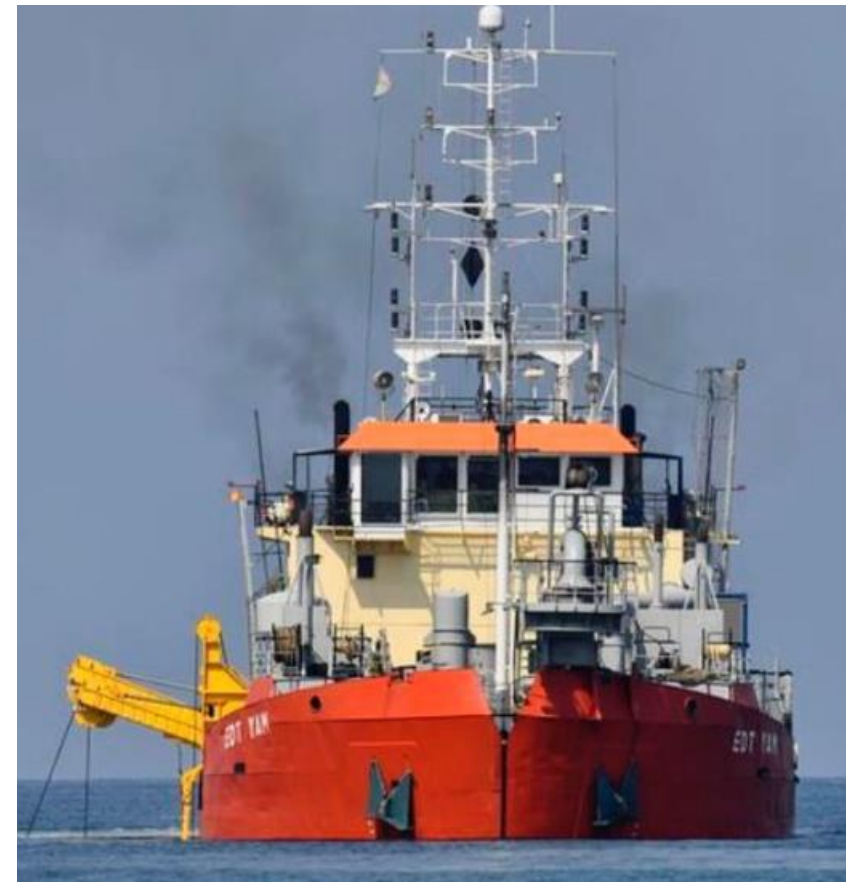
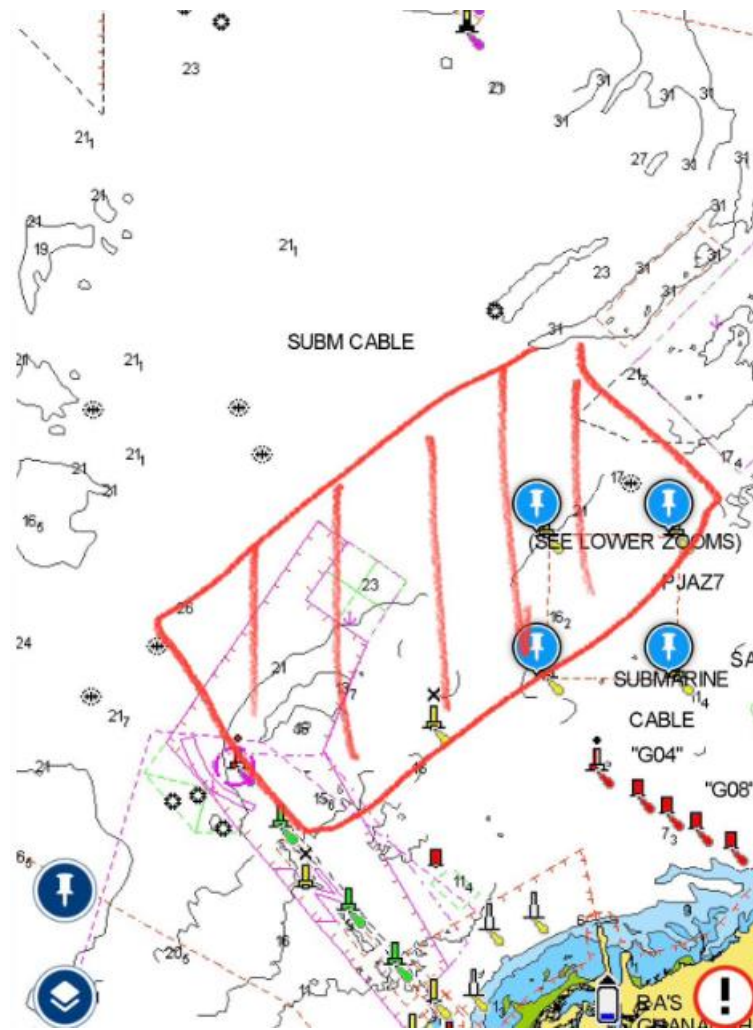
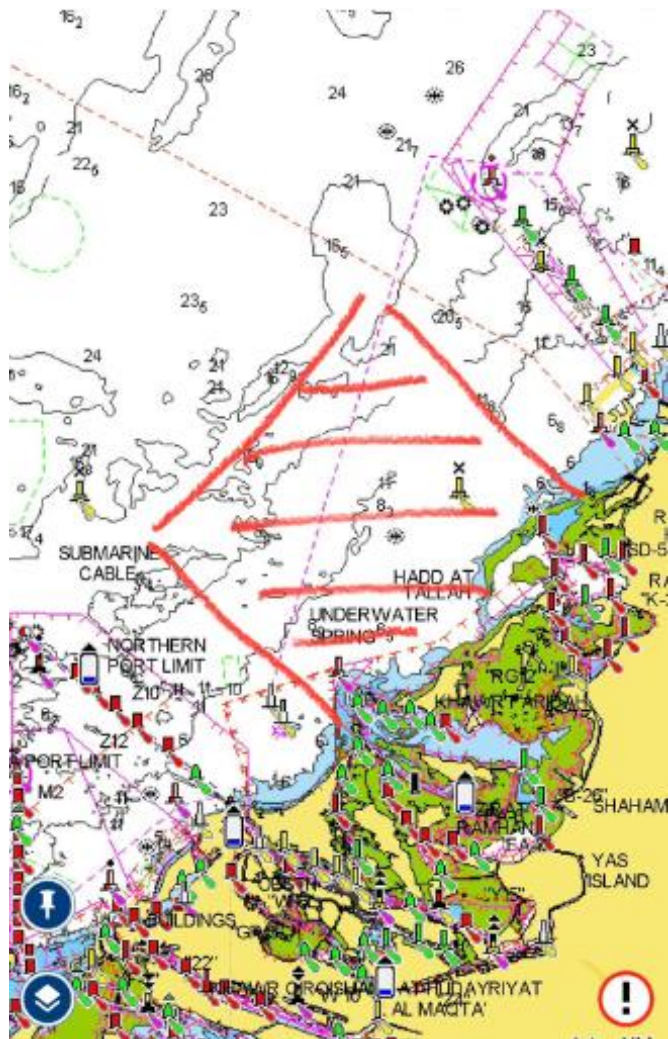
Approx 1.5km from ADMSC pontoons to West Bay Beach Club  
(Radisson Corniche)

# Additional Information

- **Saturday 7:00 PM:** Race time limit
- **Saturday 8:00 PM:** Social evening & prize giving at West Bay Beach Club, Radisson, Corniche, Abu Dhabi (Approx. 1.5 km / 20 minutes walk from the pontoons). 150 AED per person
- **Sunday @ 2:00 PM:** Berthing ends at Abu Dhabi Marine Sports Club
- No shore power/water but showers and toilets available at ADMSC.
- Vehicle access/parking near the pontoons is available at ADMSC.

\*Reminder this is a government club so please be respectful

# Temporary Exclusion zones



Any Questions?