

The Course - All Classes

Start @ DOSC
 JA (P)
 SH3 (P)
 KPFW (P)
 EX1 (P)
 EX4 (P)
 MZPF (P)
 Finish @ FWB

APPROX. 75Nm
 NOT FOR NAVIGATION

The Start

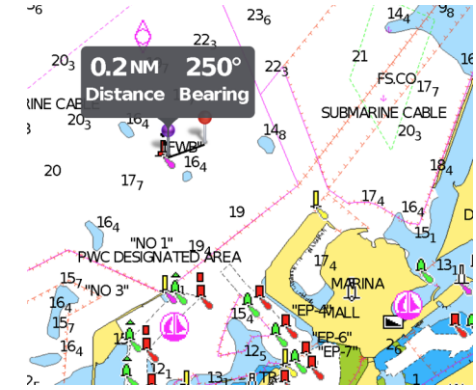
The start will be close to DOSC leaving the committee boat to Starboard and the pin to port. The pin may be any colour inflatable.

Mark Information

Abbreviation	Name	Mark Type	Lat	Long
	Start	Start Line	Close to DOSC	
JA	Jebel Ali	Safe Water Mark	25° 11.163'N	54° 53.092'E
SH3	Sahar 3	Yellow Special Mark	25° 3.835'N	54° 43.852'E
KPFW	Khalifa Port Fairway	Safe Water Mark	24° 56.789'N	54° 34.689'E
EX1	Exclusion Zone '1'	Yellow Special Mark	24°51.077'N	54°29.008'E
EX4	Exclusion Zone '4'	Yellow Special Mark	24°46.034'N	54°23.765'E
MZPF	Mina Zayed Port Fairway	Safe Water Mark	24° 39.264'N	54° 14.289'E
FWB	Fairway Buoy	Safe Water Mark	24° 29.528'N	54° 18.028'E

The Finish

FWB should be left to starboard. Your finish time should be taken when FWB bears 250degrees within 0.2NM(370m) of the mark. Finish time should be emailed to sailingadmin@doscuae.com.



Exclusion Zone Marks - Dredging and Reclamation			
EX1	Yellow Special Mark	24°51.0768'N	54°29.008'E
EX4	Yellow Special Mark	24°46.034'N	54°23.765'E
EX2	Yellow Special Mark	24°44.338'N	54°36.980'E
EX3	Yellow Special Mark	24°39.071'N	54°31.739'E

Missing Marks

If any marks are missing or are out of position by more than 100m, they should be considered virtual.