

Shorthanded Series – Keelboat and Multihull
Race Day 3 : 12th January 2025

1 start, all classes, 5-4-1-Go

All classes to start under class flag Oscar (No requirement to display course flag).

All communication VHF Channel 08

The Course for IRC A, B, Multihull, SB20 OD & NHC Club Class .

Start [Committee Boat (S), Pin (P)] (Near Dosc STF Mark)

W16 (S)

BG (P)

MB3 (S)

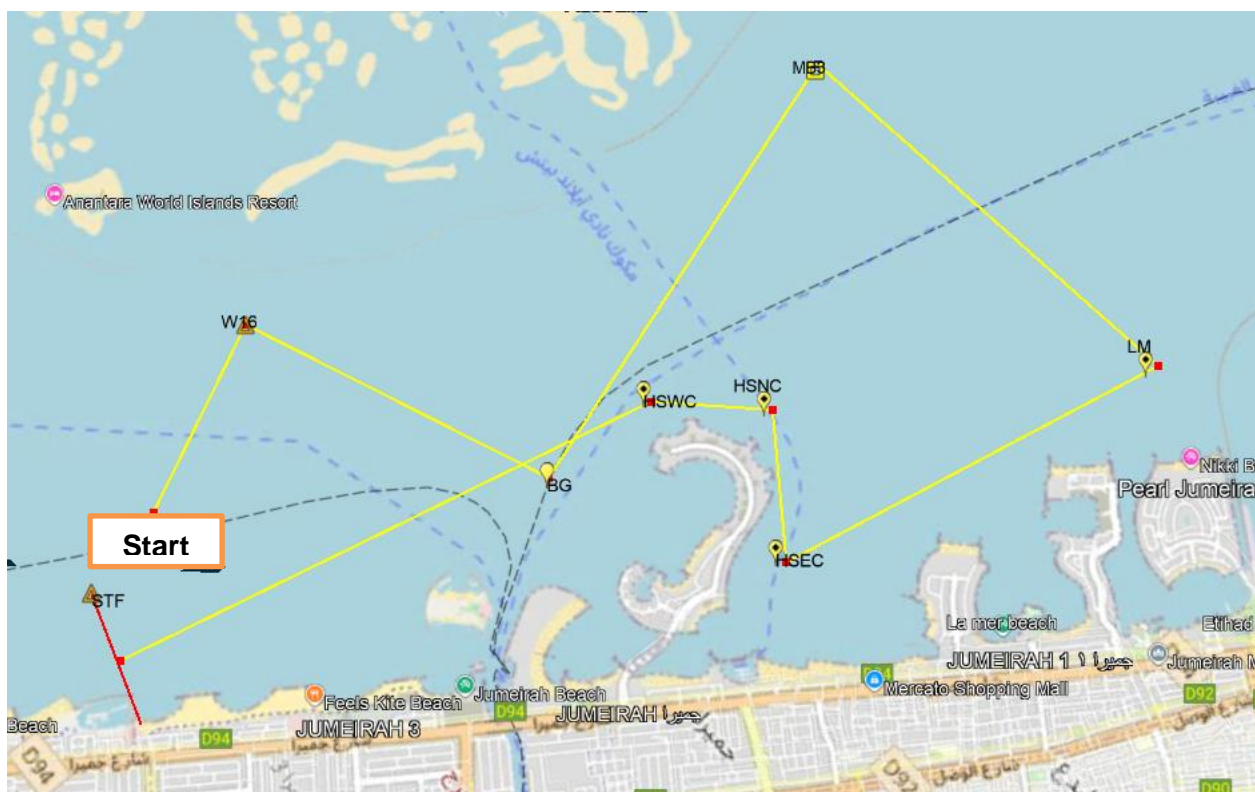
LM (S)

HSEC (S)

HSNC (P)

HSWC (P)

Finish @ Club Line, N-S



***Diagram is for illustration purposes only**

Mark Information

Abbreviation	Name	Mark Type	Lat	Long
W16	World 16	Laid Inflatable	25° 11.965'N	55° 11.801'E
BG	Bulgari Bay	Yellow Special Mark	25° 12.550'N	55° 13.372'E
MB3	Mooring Buoy 3	Fixed Mooring Buoy	25° 14.766'N	55° 12.602'E
LM	La Mer	Laid Inflatable	25° 14.905'N	55° 14.894'E
HSEC	Horseshore East Cardinal	East Cardinal	25° 13.058'N	55° 14.430'E
HSNC	Horseshoe North Cardinal	North Cardinal	25° 13.473'N	55° 13.824'E
HSWC	Horseshoe West Cardinal	West Cardinal	25° 13.092'N	55° 13.400'E

Laid inflatables may be any colour or shape and may be smart marks. The colour and shape of marks may be communicated via VHF Channel 8.

*If a mark happens to be missing, please sail around the coordinate given in the correct direction.

Finish @ The 'Club Line'

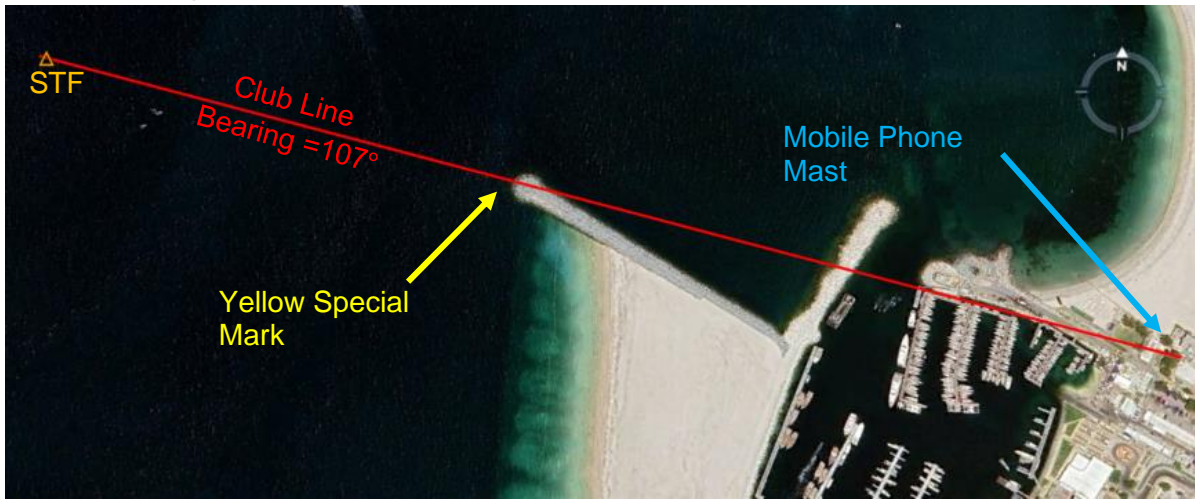
This race will be finished at the 'Club Line'. It is likely there will be no finish boat so you will need to self-declare.

If there is finish boat flying a blue flag anchored at STF, this boat will take your finish time when you cross the line between the boat and the yellow special mark on the end of the breakwater.

When no finish boat is present, competitors must take their own finish time using GPS time and send it to sailingadmin@doscuae.com within 30 minutes of finishing in the HH:MM:SS format.

The club line is a transit of the mobile phone mast (with red aviation light) and yellow special marker on the end of the breakwater (with yellow navigation light).

The club line extends 500m/0.27NM from the end of the breakwater and boats should start/finish within this distance. Laid inflatable STF marks the limit of the 500m/0.27NM and when laid, boats should start/finish within this mark, but the start line and finish line will be the transit, and finish times should be taken when the transit is crossed, irrespective of when the mark is passed.



'Club Line, N-S' denotes crossing the line from North to South.

'Club Line, S-N' denotes crossing the line from South to North.

Name	Latitude	Longitude
STF Laid Inflatable (When Laid) or Finish Boat (When Present)	25° 10.682'N	55° 12.403'E
Mobile Phone Mast (Red Aviation Strobe)	25° 10.502'N	55° 13.059'E
Yellow Special Mark on End of Breakwater (Yellow Nav Strobe)	25° 10.605'N	55° 12.687'E