



**AGMC**



DUBAI OFFSHORE  
SAILING CLUB



**AGMC Geely Commodore's Cup Coastal**  
**Race Day 1: 11<sup>th</sup> October 2025**  
**For IRC Cruiser, Multihull & Club Class**  
**Coastal Courses:**

The courses to be sailed are detailed below.

Mark rounding directions are given in brackets with (P) meaning Port Rounding and (S) meaning Starboard Rounding.

**The Course for IRC Cruiser**

Start [Committee Boat (S), Pin (P)]

W17 (S)

HSWC (P)

AGMC (S)

LM 2 (P)

LM 1 (P)

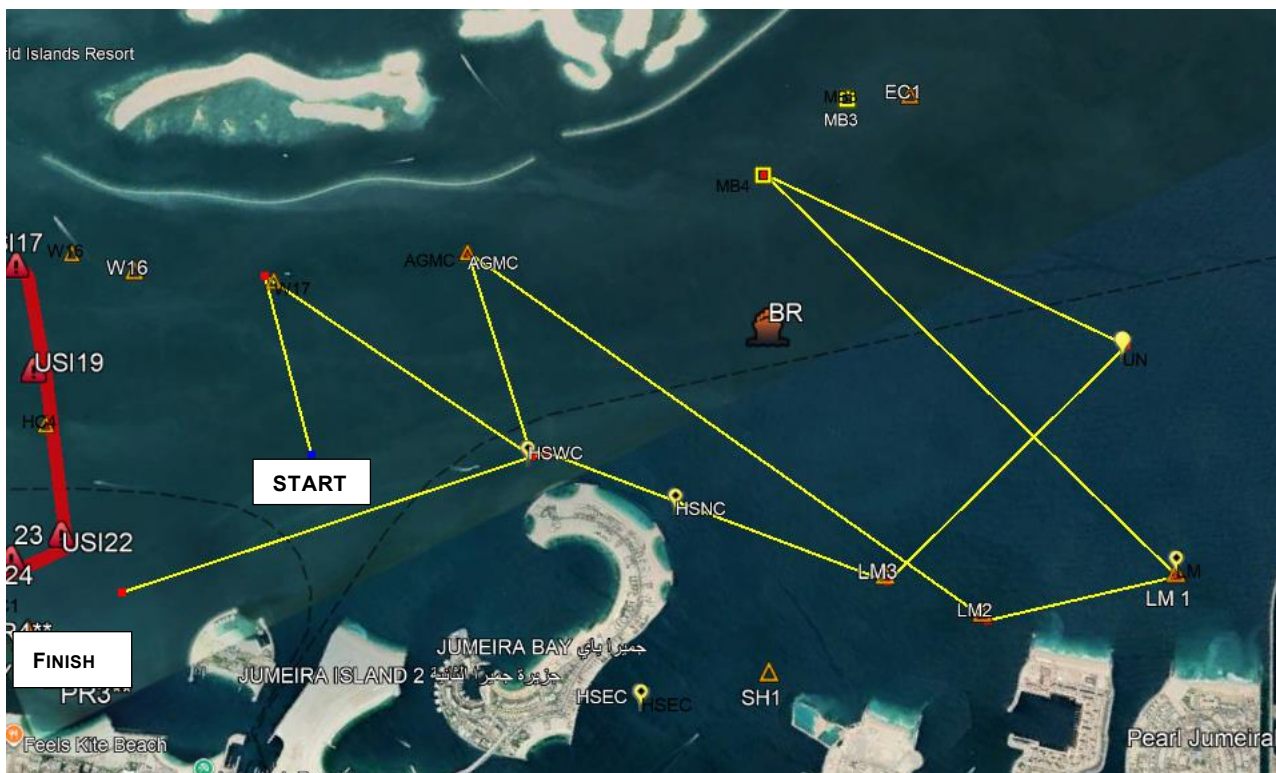
MB 4 (S)

UN (S)

LM 3 (S)

HSWC (P)

Finish @ Fixed Line N - S



**\*Diagram is for illustration purposes only**

Notice to Competitors #1 – Posted 11/10/2025

## The Course for Multihull

Start [Committee Boat (S), Pin (P)]

W17 (S)

HSWC (P)

AGMC (S)

MB 4 (S)

LM 1 (P)

MB 3 (S)

DDW 1 (S)

LM 2 (S)

HSWC (P)

Finish at Fixed line N - S



**\*Diagram is for illustration purposes only**

## The Course for Club Class

Start [Committee Boat (S), Pin (P)]

W17 (S)

HSWC (P)

AGMC (S)

LM 1 (S)

HSEC (S)

HSNC (P)

HSWC (P)

Finish at Fixed line N - S



**\*Diagram is for illustration purposes only**

### Mark Information

Abbreviation	Name	Mark Type	Lat	Long
S	Start	Start Line	1.5 N of DOSC	
W17	World 17	Laid Inflatable	25° 12.575'N	55° 12.272'E
HSWC	Horseshoe West Cardinal	West Cardinal	25° 13.092'N	55° 13.400'E
AGMC	AGMC	Laid Inflatable	25° 13.245'N	55° 12.509'E
LM3	La Mer 3	Laid Inflatable	25° 14.012'N	55° 14.403' E
HSNC	Horseshoe North Cardinal	North Cardinal	25° 13.473'N	55° 13.824'E
MB4	Mooring Buoy 4	Fixed Mooring Buoy	25° 14.342'N	55° 12.746'E
MB3	Mooring Buoy 3	Fixed Mooring Buoy	25° 14.766'N	55° 12.602'E
LM1	La Mer	Laid Inflatable	25° 14.905'N	55° 14.894'E
LM 2	La Mer 2	Laid Inflatable	25° 14.243'N	55° 14.694'E
DDW1	Dry Docks World 1	Safe Water Mark	25° 16.850'N	55° 14.104'E
UN	Union	Laid Inflatable	25° 15.171'N	55° 14.027'E

Laid inflatables may be any colour or shape and may be smart marks. The colour and shape of marks may be communicated via VHF Channel 8.

Notice to Competitors #1 – Posted 11/10/2025

\*If a mark happens to be missing, please sail around the coordinate given.

## Finish @ Fixed line

This race will be finished at a fixed line. If there is no finish boat, you will need to self-declare.

If there is finish boat flying a blue flag anchored at the fixed line, this boat will take your finish time when you cross the line between the boat and the USI22 on the end of the exclusion zone

When no finish boat is present, competitors must take their own finish time using GPS time and send it to [sailingadmin@doscuae.com](mailto:sailingadmin@doscuae.com) within 30 minutes of finishing in the HH:MM:SS format.

When there is no finish boat or mark utilise the GPS mark coordinate and the physical USI22 marker to finish.

The line is between the USI 22 exclusion zone mark and a laid inflatable (or coordinate when not laid)/or anchored finish boat flying a blue flag.

The line extends 500m/0.27NM from the end of USI 22 at a bearing of 50° and boats should start/finish within this distance. Laid inflatables (or coordinate) mark the limit of the 500m/0.27NM and when laid, boats should start/finish within this mark (or coordinate).



'Fixed Line, N-S' denotes crossing the line from North to South.

Name	Latitude	Longitude
Finish (Laid Inflatable)	25° 11.579' N	55° 13.197' E
USI22 (Exclusion marker)	25° 11.525' N	55° 12.900' E