

  
MARINAS  
by PORTO MONTENEGRO

**JEEPERS**  
EDITION™

**PALM  
JUMEIRAH**  
Marina

**DUBAI  
ISLANDS**  
Marina



# PINK PARADE

October 25<sup>th</sup> 2025



LET'S GET PINK

DUBAI  
ISLANDS  
Marina

PALM  
JUMEIRAH  
Marina

JEEPERS  
EDITION

MARINAS  
by PORTO MONTENEGRO

# PINK PARADE OVERVIEW



Palm Jumeriah & Dubai Islands Marinas are delighted to welcome you to the first ever Pink Parade on water!

## SATURDAY, 25<sup>TH</sup> OCTOBER 2025:

- Meeting time at 1330 Palm East Anchorage, departing by 1400 sharp. Location: **25' 7.061N 55' 8.699E**
- Make sure you are Pink! Flags, ribbon, t-shirts whatever you have to display, the more the better. Best dressed wins a brand new Trager BBQ worth AED 2,000!
- Arriving at Dubai Islands approximately 1530/1600.
- There is no fuel station during the trip, ensure that you fuel before the trip and please bring some spare fuel if you have a small boat.
- When arriving at Dubai Islands Marina you will be directed into the basin, please keep your speeds low and await further instructions from the lead boat. We will assist you on directing you to your allocated berth.
- Once you're safely berthed you are free to enjoy the event on the Dubai islands lawn with complimentary catering and activities.

# MEETING POINT FOR BOATERS

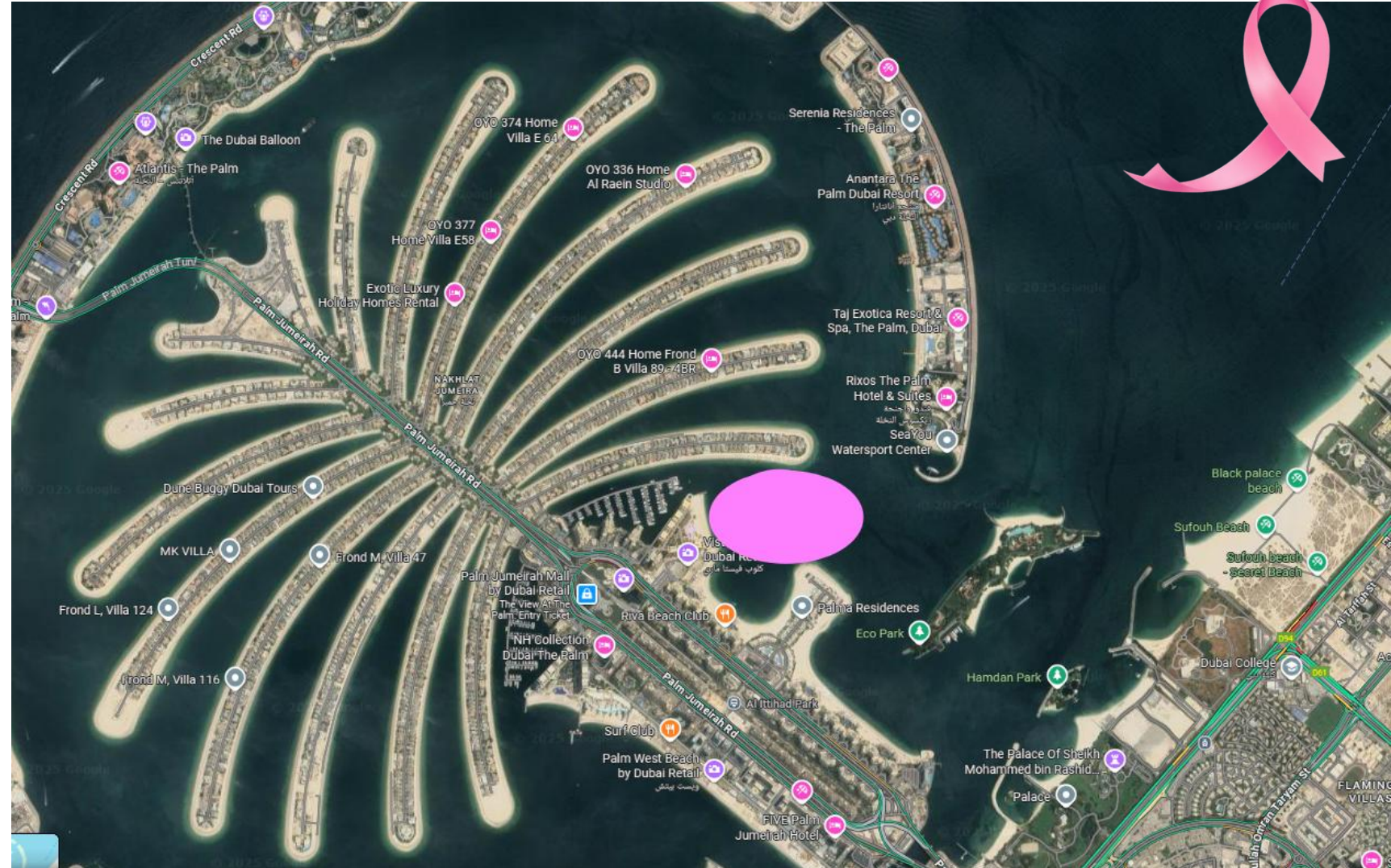
DUBAI  
ISLANDS  
Marina

PALM  
JUMEIRAH  
Marina

JEEPERS  
EDITION

MARINAS  
by PORTO MONTENEGRO

- MEETING POINT:  
**25' 7.061N 55' 8.699E**
- 1330 Arrival Time
- When you arrive please check in on VHF 72 stating your lead booking name and reg number so we can check you in.
- Once you have checked please await for further instructions from the parade master on VHF.
- While waiting please find some space to hold off and stand by until we are ready to leave.
- We expect the anchorage to be busy with parade boats so please take necessary precautions.
- We will be departing 1400 sharp where we can honk our horns and make some noise as we leave to give everyone a spectacle from afar!



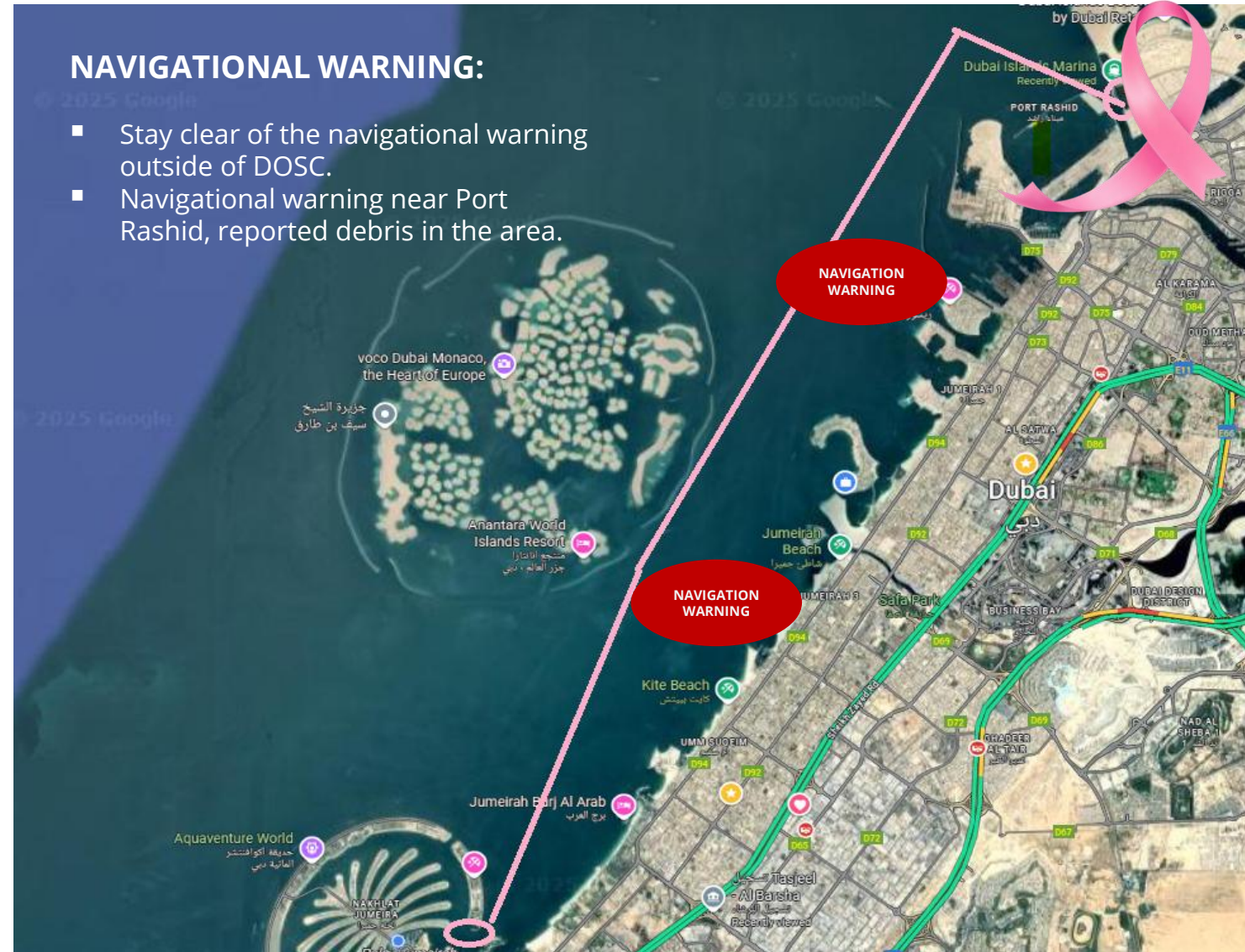
# ROUTE TO DUBAI ISLANDS

## ROUTE:

- Meeting in Palm Marina East.
- Cruise towards world islands.
- Staying clear of the navigational warning outside of DOSC.
- Cruise over the top of Port Rashid staying clear of shipping channels and traffic.
- Once clear of Port Rashid we head towards the entrance of Dubai Creek.
- The Boat Marshalls will then guide you into the entrance of Dubai Islands marina.
- We ask for your patience while we guide you into your allocated berth number.
- Please refer to the Pilotage Plan on the next page.

## NAVIGATIONAL WARNING:

- Stay clear of the navigational warning outside of DOSC.
- Navigational warning near Port Rashid, reported debris in the area.



# PILOTAGE PLAN

It is best practice to pre-set the coordinates in your GPS before the Parade.



## THE PINK PARADE WAYPOINTS

WPT	Lat	Long	Other Info
<b>Muster Point</b>	25° 7,061 N	55° 8,699 E	Palm EAST Anchorage (Near Club Vista Mare)
<b>Way Point 1</b>	25° 7,2521 N	55° 9,414 E	Exit East Anchorage towards world islands
<b>Way Point 2</b>	25° 11,664N	55° 11,526 E	Moving clear of navigational warning outside DOSC. DO NOT CROSS
<b>Way Point 3</b>	25° 17,222 N	55° 15,419 E	Moving above Bvlgari Island toward port rashid. Take care of shipping traffic.
<b>Way Point 4</b>	25° 17,463 N	55° 17,135 E	Approach entrance to creek channel.
<b>Way Point 5</b>	25° 17,138 N	55° 17,441 E	Marina basin entrance, please proceed with caution awaiting team to guide you in.

## DEFINITIONS

- WPT - Waypoint
- Lat / Long – Latitude / Longitude
- BTW - Bearing To Waypoint
- DTW - Distance To Waypoint
- TTW - Time To Waypoint
- BBG - Back Bearing
- Traffic Separation Schemes are to be crossed as quickly as possible while maintaining a safe speed at a 90° only if there are no vessels approaching from either way.

# OVERNIGHT & DEPARTURE

DUBAI  
ISLANDS  
Marina

PALM  
JUMEIRAH  
Marina

**JEEPERS**  
EDITION

**M**  
MARINAS  
by PORTO MONTENEGRO

- Please check the allocation sheet (next page) on your assigned dock. You are free to berth in any of the berths available on that dock when you arrive.
- Please bring spare power plugs or adaptors should we need to change your plug onsite.
- Please cross reference with the berthing map to find your dock.
- If you don't see your name or reg no. please contact us directly and we will assign for you.
- If you are staying overnight,



# OVERNIGHT & DEPARTURE

- Please check the allocation sheet (next page) on your assigned dock. You are free to berth in any of the berths available on that dock when you arrive.
- Please bring spare power plugs or adaptors should we need to change your plug onsite.
- Please cross reference with the berthing map to find your dock.
- If you don't see your name or reg no. please contact us directly and we will assign for you.
- If you are staying overnight, we have a 24-hour team onsite and will be available to help you depart the next day. Please see the emergency contact numbers for the Dubai Islands marina duty and office numbers.
- Sailing permits are available from marina office if going further than 3 nautical miles offshore.
- Complimentary ice is also available before you leave.
- Toilets available in North and South Parking
- Please make sure you bring your own lines to tie up!
- If you want to connect to water, please make sure you bring your hose connector.



# OVERNIGHT & DEPARTURE

DUBAI  
ISLANDS  
Marina

PALM  
JUMEIRAH  
Marina

JEEPERS  
EDITION

MARINAS  
by PORTO MONTENEGRO

- If you are **not** staying overnight, you're welcome to leave as when you want on your own accord. The return from Dubai islands will be unassisted but feel free to arrange with fellow boaters to return with you if you want.
- The event will be running from approx. 4pm – 10pm but you're welcome to leave as you see fit.



# BERTHING ALLOCATIONS

**DUBAI ISLANDS**  
Marina

**PALM JUMEIRAH**  
Marina

**JEEPERS**  
EDITION

**MARINAS**  
by PORTO MONTENEGRO

NAME	DP NUMBER	DEPARTING MARINA	BERTH NUMBER ASSIGNED
Alex Berry	DC 601	JA Marina	C Dock
Lars Lind	UK 302210	Palm East	D Dock
Jonathon Nichols	4797	Palm East	D Dock
Aida Jemal	DC 704	Dubai Marina Yacht Club	Floating
Adrian Tiwari	DP8576	Dubai East Marina	C Dock
Paul van Zyl	DP5198	Dubai Island	G-02
Najib Hashem	5481	Mina Rashid	C Dock
John Burt	2556	DOSC	D Dock
Petri Moilanen	DP3602	Palm West Marina	C Dock
Majed Akl	4892	DOSC	D Dock
Jennifer Perret	AUS 861564	Palm East Marina	D Dock
Sami Mneimneh	DP6428	Palm East	D Dock
Shahzad Bashir	4549	Trailer drop	C Dock
Oliver Wirt	1293	DOSC	D Dock
Melissa Kfoury	E10	Palm West	D Dock
Mohab Nematallah	6480	Jebel Ali	C Dock
Michael Fetton	DP 8012	Mina Rashid	D Dock
Saeed Bin Shabib	6871	Dubai Island Marina	C Dock
Roman Dolgopolyuk	DP2864	Palm East	D Dock



# BERTHING ALLOCATIONS

**DUBAI ISLANDS**  
Marina

**PALM JUMEIRAH**  
Marina

**JEEPERS**  
EDITION

**MARINAS**  
by PORTO MONTENEGRO

NAME	DP NUMBER	DEPARTING MARINA	BERTH NUMBER ASSIGNED
Hashim Ossaily	2452	Palm West	C Dock
Andrey Butorin	DP 5783	Palm East	C Dock
Pierre Choueiry	1817	Palm East	A-14
Sami Mneimneh	DP6428	Palm East	D Dock
Badr Benryane	DP7692	Palm East	C Dock
Marco Gentili	2304	Palm East	D Dock
Jen Perret	861564	Palm East	D Dock
Daniel Matthewson	DP3982	DOSC	D Dock
Laurent Marie	DP 6201	Palm East	D Dock
Marco Gentili	DP2304	Palm East	D Dock
Paul Smith	DP3729	Palm East	D Dock
Alessandro Pacione	DP5742	Palm East	D Dock
Ana Cezar	DP7625	Palm East	D Dock
Betty Camacho	DP2310	DOSC	D Dock
Mahmoud Saad	DP8037	Palm East	C Dock
Steve Arnott	DP1120	Dubai Harbour	D Dock
Fikret Isti	DP 4596	DOSC	D Dock
Khaled Fathi	7825	DOSC	D Dock
Wael El Chami	DP4171	Dubai Marina Yacht Club	C Dock



# BERTHING ALLOCATIONS

**DUBAI ISLANDS**  
Marina

**PALM JUMEIRAH**  
Marina

**JEEPERS**  
EDITION

**MARINAS**  
by PORTO MONTENEGRO

NAME	DP NUMBER	DEPARTING MARINA	BERTH NUMBER ASSIGNED
Alessio La Rosa	DP14187	Creek	C Dock
Simon Flynn	DP1990	DOSC	D Dock
Ross Youngman	DP3069	Dubai Marina	C Dock
Kai Malmivaara	3295	Dubai Marina Yacht Club	C Dock
Arif Albastaki	DP 6159	Palm East	D Dock
Graham Sutherland	DP1583	Dubai Marina Yacht Club	A-04
Candida Pinto	DP 3271	Dubai Marina Yacht Club	C Dock
Fikret Ustun	DP4596	DOSC	D Dock
Nilson Perini	AP15723	Dubai Island Marina	Original Berth
LeeAnne DAoust	4887	Palm East	D Dock
Ramzi Modad	365	Palm East	C Dock
Joe Battikh	7845	Dubai Island Marina	Original Berth
William Berney	6359	Palm East	E Dock
Shaun Killa	DP7204	DOSC	E Dock
Rebecca Mcgibbon	3161	DOSC	E Dock
Medhat Daniel	7604	Dubai Marina Yacht Club	C Dock
Jan Felton	Visiting	DOSC	E Dock
Matthew Keen	2528	DOSC	E Dock
Craig Carter	DP 6289	Dubai Marina Yacht Club	C Dock



# BERTHING ALLOCATIONS

**DUBAI ISLANDS**  
Marina

**PALM JUMEIRAH**  
Marina

**JEEPERS**  
EDITION

**MARINAS**  
by PORTO MONTENEGRO

NAME	DP NUMBER	DEPARTING MARINA	BERTH NUMBER ASSIGNED
Reg Randall	DP4036	Dubai Marina Yacht club	A-05
Fawzi Sultan	KUW 20/59001	DOSC	E Dock
Christoph Kunz	3689	DOSC	E Dock
Simon Reeves	GBR938R	DOSC	E Dock
Abdallah Elkhaboutly	RC9844	Palm East	E Dock
Shaun Frost	D-00069	Dubai Marina	C Dock
Denys Bandura	4681	DOSC	E Dock
Adrian Jarvis	DP2767	DOSC	E Dock
Robert Lakos	1436	DOSC	E Dock
Dmitry Yamshchikov	5604	DOSC	E Dock
Moatasem Mohaisen	5013	Dubai Islands Marina	C Dock
Mark Nolan	3562	DOSC	E Dock
Helena Cuenat	DP2527	DOSC	E Dock
Dmitry Yamshchikov	5604	DOSC	E Dock
Hassan Aoun	DP2853	DOSC	E Dock
Willem Moelker	1462	DOSC	E Dock
Waseem Khokhar	6782	DOSC	E Dock
Jeffrey Grima	DP1704	DOSC	E Dock
Luuk Strijers	Foreign Flag	Palm East	E Dock



# BERTHING ALLOCATIONS

DUBAI  
ISLANDS  
Marina

PALM  
JUMEIRAH  
Marina

**JEEPERS**  
EDITION

**M**  
MARINAS  
by PORTO MONTENEGRO

NAME	DP NUMBER	DEPARTING MARINA	BERTH NUMBER ASSIGNED
Bernardo Landaboure	1152	DOSC	E Dock
Daniel Wills	DP6324	DOSC	E Dock
Edward Shiffner	2043	DOSC	E Dock
William Berney	6359	Palm East	E dock
Pedro Alves	1267	DOSC	E Dock
Julien Monie	NA G69809	Palm East	E Dock
Lee Brown	DP3828	DOSC	E Dock
Edwin Westerhof	7094	Palm East	C Dock
Luiz Bertuol	Foreign Flag	DH Marina	C Dock
Ferdinand Varga	DP8615	DOSC	C Dock
Andrei Belkov	6321	Palm East	C Dock
Philippe Saad	504586171	Palm East	C Dock
Sharyar Vaziri	1685	JA Marina	C Dock
Hilary Ackermann	8803	Mina Rashid	C Dock



# BERTHING PLAN

DUBAI ISLANDS Marina

PALM JUMEIRAH Marina

JEEPERS EDITION

MARINAS by PORTO MONTENEGRO



- 125A - 3P
- 63A - 3P
- 63A - 1P
- 32A - 1P

**PIER-J**

J13 - 9m
J12 - 9m
J11 - 9m
J10 - 9m
J09 - 9m
J08 - 9m
J07 - 9m
J06 - 9m
J05 - 9m
J04 - 9m
J03 - 9m
J02 - 9m
J01 - 9m

**PIER-I SLIPWAY BERTH**

I25 - 9m	9m - I26
I25 - 9m	9m - I24
I21 - 9m	9m - I22
I19 - 9m	9m - I20
I17 - 9m	9m - I18
I15 - 9m	9m - I16
I13 - 9m	9m - I14
I11 - 9m	9m - I12
I09 - 9m	9m - I10
I07 - 9m	9m - I08
I05 - 9m	9m - I06
I03 - 9m	9m - I04
I01 - 9m	9m - I02

**PIER-H PUMPOUT BERTH**

H17 - 13m	13m - H18
H15 - 13m	13m - H16
H13 - 13m	13m - H14
H11 - 13m	13m - H12
H09 - 13m	13m - H10
H07 - 13m	13m - H08
H05 - 13m	13m - H06
H03 - 13m	13m - H04
H01 - 13m	13m - H02

**PIER-G**

G19 - 13m	13m - G20
G17 - 13m	13m - G18
G15 - 13m	13m - G16
G13 - 13m	13m - G14
G11 - 13m	13m - G12
G09 - 13m	13m - G10
G07 - 13m	13m - G08
G05 - 13m	13m - G06
G03 - 13m	13m - G04
G01 - 13m	13m - G02

**PIER-F**

F29 - 15m	15m - F30
F27 - 15m	15m - F28
F25 - 15m	15m - F26
F23 - 15m	15m - F24
F21 - 15m	15m - F22
F19 - 15m	15m - F20
F17 - 15m	15m - F18
F15 - 15m	15m - F16
F13 - 15m	15m - F14
F11 - 15m	15m - F12
F09 - 15m	15m - F10
F07 - 15m	15m - F08
F05 - 15m	15m - F06
F03 - 15m	15m - F04
F01 - 15m	15m - F02

**PIER-E**

E29 - 15m	15m - E30
E27 - 15m	15m - E28
E25 - 15m	15m - E26
E23 - 15m	15m - E24
E21 - 15m	15m - E22
E19 - 15m	15m - E20
E17 - 15m	15m - E18
E15 - 15m	15m - E16
E13 - 15m	15m - E14
E11 - 15m	15m - E12
E09 - 15m	15m - E10
E07 - 15m	15m - E08
E05 - 15m	15m - E06
E03 - 15m	15m - E04
E01 - 15m	15m - E02

**PIER-D PUMPOUT BERTH**

D31 - 15m	15m - D32
D29 - 15m	15m - D30
D27 - 15m	15m - D28
D25 - 15m	15m - D26
D23 - 15m	15m - D24
D21 - 15m	15m - D22
D19 - 15m	15m - D20
D17 - 15m	15m - D18
D15 - 15m	15m - D16
D13 - 15m	15m - D14
D11 - 15m	15m - D12
D09 - 15m	15m - D10
D07 - 15m	15m - D08
D05 - 15m	15m - D06
D03 - 15m	15m - D04
D01 - 15m	15m - D02

**PIER-C**

C33 - 15m	15m - C34
C31 - 15m	15m - C32
C29 - 15m	15m - C30
C27 - 15m	15m - C28
C25 - 15m	15m - C26
C23 - 15m	15m - C24
C21 - 15m	15m - C22
C19 - 15m	15m - C20
C17 - 15m	15m - C18
C15 - 15m	15m - C16
C13 - 15m	15m - C14
C11 - 15m	15m - C12
C09 - 15m	15m - C10
C07 - 15m	15m - C08
C05 - 15m	15m - C06
C03 - 15m	15m - C04
C01 - 15m	15m - C02

**PIER-B**

G19 - 13m
G17 - 13m
G15 - 13m
G13 - 13m
G11 - 13m
G09 - 13m
G07 - 13m
G05 - 13m
G03 - 13m
G13 - 13m
G11 - 13m
G09 - 13m
G07 - 13m
G05 - 13m
G03 - 13m
G01 - 13m

# EMERGENCY CONTACT NUMBERS

Emergency contact numbers for the support boats and Marinas should you need to stop for technical difficulties.

## IMPORTANT NUMBERS

<b>Oliver Rees</b>	Parade Master	0556526339/ VHF 72
<b>Bronwyn Fray</b>	Dubai Islands Onsite Manager	0558870410
<b>Parade Lead Boat</b>	VHF Channel	VHF Channel 72
<b>Yasir</b>	Marina Supervisor Palm	055 506 6914
<b>Dubai Islands Marina</b>	Marina Duty Number	056 329 0624
<b>Dubai Islands Marina</b>	Office Duty Number	050 469 0355
<b>Palm Marina</b>	Marina Office Duty Phone	056 997 5036



## WHAT TO DO IN AN EMERGENCY?

- Please radio or call parade master with your situation.
- Once the situation is confirmed parade master will direct the correct support for you.

# EVENT MAP AT DUBAI ISLANDS

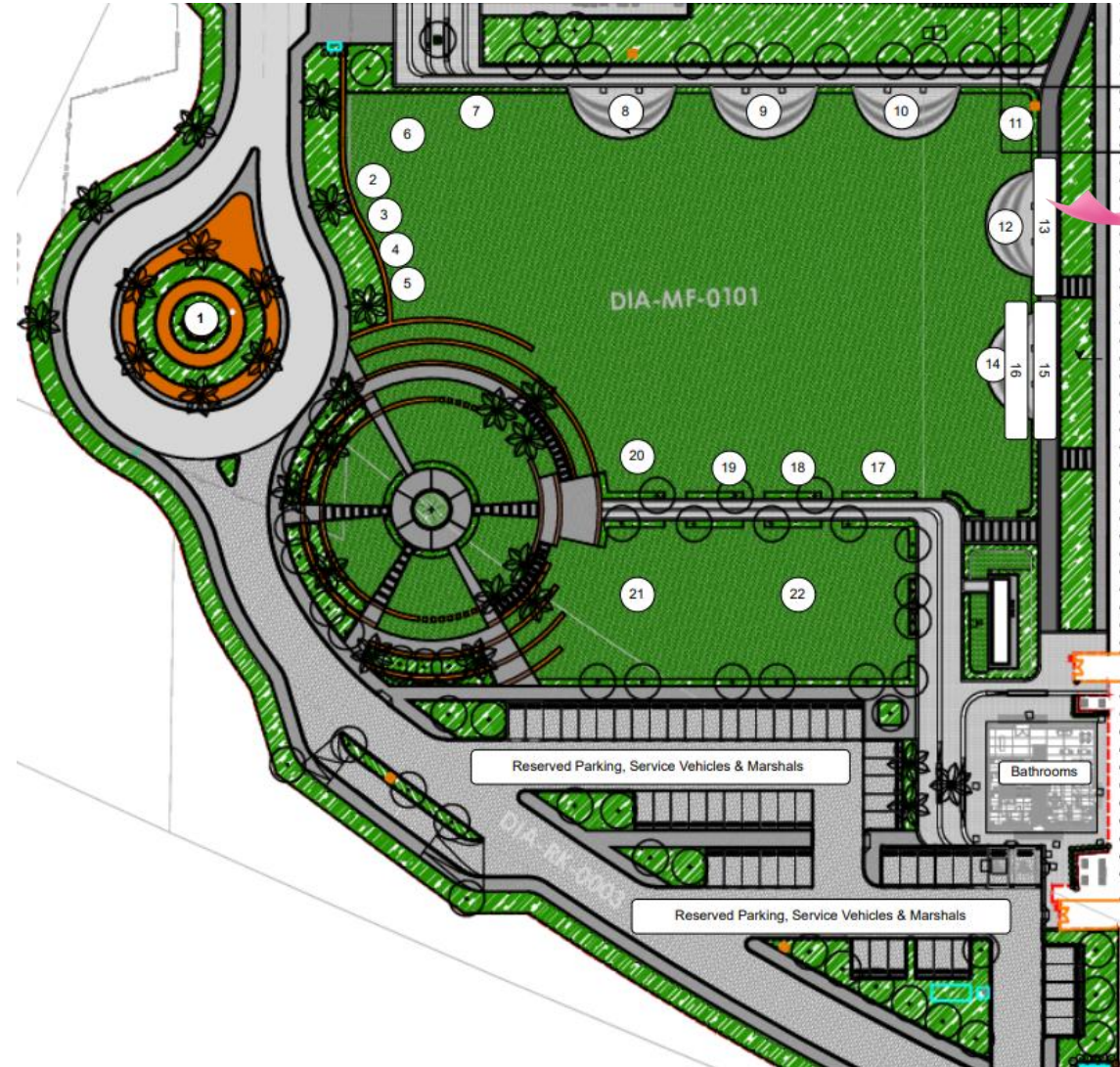
DUBAI  
ISLANDS  
Marina

PALM  
JUMEIRAH  
Marina

JEEPERS  
EDITION

MARINAS  
by PORTO MONTENEGRO

- Jeepers New Build Jeep
- Jeepers New Build Jeep
- Xtreme New Build Jeep
- Xtreme New Build Jeep
- Jeepers New Build Jeep
- Red Bull Tent
- Rubicon Exotic Stand
- Traeger Food Stand
- Mattar Food Stand
- Wimpy & Krispy Kreme Food Stand
- Lock Stock & Barrel Vehicle
- Band
- Red Bull Arch
- DJ & Speakers Area
- Red Bull Arch
- Screen with Sponsors behind DJ & Speakers
- Jeep Footware Stand
- MyPT Stand
- Biosaurus Stand
- Jeepers Tent with Beanbags
- Daley Bounce Area
- Stamina 11 Area



# EVENT SCHEDULE AT DUBAI ISLANDS

DUBAI  
ISLANDS  
Marina

PALM  
JUMEIRAH  
Marina

JEEPERS  
EDITION

MARINAS  
by PORTO MONTENEGRO

## 4PM

Convoy of Jeeps Arrive led by the Motorsport Federation and Dubai Police Supercars, with Mediclinic Ambulance.  
Pink Parade starts to arrive by water and boats move into allocated docks.

## 5PM

All participants will make their way to the main lawn area where all the activities are planned.

Speeches from Mediclinic and Survivors groups

## 6PM

Food & Drinks Service Starts

## 5.45PM – 7PM

Music from the DJ

## 7PM – 8PM

Live Band on main stage

## 8PM -10.30PM (CLOSE)

DJ resumes at 8pm until close at 10.30pm



# PRE-PARADE PREPARATION

**Please familiarise yourself with the below in the event of an emergency.**

## **Documents to carry during the Parade:**

- ID for all passengers.
- Boat registration card, insurance and boat driving license.
- Money; cash and card.
- Please contact Lead parade boat on VHF when arriving in the east anchorage to check in and confirm your attendance.
- Access to a phone and VHF Channel 72.
- All contact numbers saved in your phones.
- A copy of this safety presentation.

## **Boat preparation:**

- Please conduct a basic safety inspection of your vessel and safety equipment. You will find a recommended safety check list on the following page.
- Please familiarise yourself with the safety information on the following pages.



# PRE-PARADE PREPARATION

ENGINES AND GENERATOR				
	Day	Week	Month	Year
Oil Filters Engine and Generator	X	X		X
Fuel Filters Engine and Generator	X	X		X
Strainers (if fitted)	X		X	X
Seacocks (if fitted)			X	X
E/R Blowers	X		X	X
Bilge Pumps and Float Switches	X	X		X
Engine and Generator Belts	X		X	X
Engine and Generator Hoses	X		X	X
Hose and Pipe Clamps	X		X	X
Battery Charge Secure			X	X
Stern Seals	X		X	X
Steering	X			
Engine Room Hatch Operation		X		X
Engine Controls	X			
Gear Boxes				X
Couplings				X
Bilges	X			
Alarms	X			
Coolant/Oil Leaks	X			
Fuel Tanks/Fittings	X			
Fuel Level	X			
Fuel Lines/Pipes	X			
Hydraulic Hoses/Lines	X			
Electrical Cables and Lugs	X			
Assorted Bolts/Nuts/Washers/Fasteners		X		X

HULL AND DECK				
	Day	Week	Month	Year
Anchor winch		X		X
Captans			X	X
Anchor, Chain, Warp, Swivels				X
Anchor Secure		X		
Security/Water Tightness of Hatches		X		X
Cleats		X		X
Safety Rails		X		X
Operation of Crew Seats		X		X
Check Bow, Stern and Spring Lines		X		X
Fenders		X		X
Antennas		X		X
Nav Lights	X			
Other lights	X			
Loud Hailer	X			
Sirens		X		X
Fuel Filters	X	X		X
Tubes			X	X

ELECTRONICS				
	Day	Week	Month	Year
Bilge Pumps	X	X	X	X
GPS		X		X
All Instruments		X		X

UNDER WATER				
	Day	Week	Month	Year
Check Hull for Damage				X
Bow Thruster/Stern Thruster			X	X
Skin Fittings/Through Hull Fittings			X	X
Shafts				X
Cutlass Bearings			X	X
Propellers		X		
Rudders				X
Water intakes for Jet Propulsion	X			
Steering	X			
Anodes				X
Trim Tabs				X
Transducer/Sounder				X
Anti Foul				X

SAFETY EQUIPMENT				
	Day	Week	Month	Year
Life Jackets		X		X
Fire Extinguishers (Engine Room and Deck)			X	X
Life Rings and Floating Rope			X	X
First Aid Kit			X	X
Charts For The area				X
Flares				X
VHF Radio		X		X
Boat Hook				X
Torch and Spare Batteries		X		X
Knife (Serated)				X
Basic Tool Kit				X
Dive Mask				X
EPIRB				X

# SAFETY SUPPORT

DUBAI  
ISLANDS  
Marina

PALM  
JUMEIRAH  
Marina

**JEEPERS**  
EDITION

**M**  
MARINAS  
by PORTO MONTENEGRO

Please familiarise yourself with the below in the event of an emergency.

## Primary Support Boat DC 1072

- Palm Jumeirah Parade team, first aid kit, defibrillator, fire cart, dive equipment, tool kit and towing equipment.
- The Parade Team is available on the Emergency Contact Number page.

## Risks and Responses:

- The table on the following page highlights the major risk factors on a Sea Rally and PJ's strategy for mitigation or response.
- When contacting the Parade team for emergency response purposes, please clearly state the severity of the situation, your name, location, boat registration number and any distinctive features.





RISK	MITIGATION (TO REDUCE RISK)	RESPONSE (HOW TO RESPOND TO RISK)
<p>Mechanical failure. Low to Moderate risk. Low to Moderate incident.</p>	<p>All captains must complete a detailed engine check before every trip. Parade team have trained divers should power loss be due to a fowled propeller and towing equipment is available on board.</p>	<p>Contact the Parade team on the numbers listed on the Emergency Contact Numbers page.</p>
<p>Run out of fuel. Low risk. Minor incident.</p>	<p>Refuel before departure and carry spare fuel if you are a small vessel. Check weather forecast and note that strong weather may significantly increase fuel consumption.</p>	<p>Physically check your fuel level if you think you are running low. Contact the parade team on the numbers listed on the Emergency Contact Numbers page straight away. Carry spare fuel if you are a small vessel.</p>
<p>Getting lost. Low risk. Minor incident.</p>	<p>All captains must review destination location and pilotage plan. Test GPS system and pre-set the coordinates for the trip before the Rally. Travel with the parade team for increased safety.</p>	<p>Contact the Parade team on the numbers listed on the Emergency Contact Numbers page. If you cannot reach either then contact nearby vessels on VHF Channel 72 for assistance.</p>
<p>Drowning. Low risk. Serious incident.</p>	<p>No swimming will be allowed unless all boats agree to a stop. All guests to swim within 15 meters of the shore/anchorage location in the designated area and relevant to their skill level. Scuba diving and water sports to be conducted in designated areas off limits to vessels and by qualified professionals.</p>	<p>In the event of a rescue, take the person to shore or on board a nearby vessel. Please the person in the recovery position, commence CPR. Ask someone to contact the parade team on the numbers listed on the Emergency Contact Numbers page. A defibrillator is on board the parade boat.</p>
<p>Collision in anchorage. Low risk. Moderate incident.</p>	<p>All captains to review Collision Regulations from RYA website. Observe the channel and anchorage guide. Be alert at all times.</p>	<p>Contact the parade team on the numbers listed on the Emergency Contact Numbers page. In the event of an injury or a man over board follow the correct procedures and prioritize life.</p>
<p>Man Overboard. Low risk. Moderate incident.</p>	<p>Ensure all passengers unable to swim or at high risk wear a life jacket. Life jackets are mandatory on all small open vessels.</p>	<p>For cases where immediate rescue is difficult or risks injury to the man over board, contact the Rally team on the numbers listed on the Emergency Contact Numbers page. Maintain constant watch on the man over board.</p>
<p>Vessel fire. Low risk. Serious incident.</p>	<p>All captains must check validity and operability of fire equipment on board.</p>	<p>Tackle the fire if it is safe to do so. Contact the parade team on the Emergency Contact Numbers. Fire fighting equipment is on board the Rally boat.</p>

## MEDICAL ASSISTANCE



What to do if you have someone on your vessel who requires medical assistance.

In the event that you need first aid assistance please contact the Parade team on the numbers listed on the Emergency Contact Numbers page.

There is a first aid kit and a defibrillator on the lead parade boat.

What to do in the event a person is injured to the extent that they need a hospital or an ambulance.

Contact the Parade team team on the numbers listed on the Emergency Contact Numbers page and transport of the casualty will be arranged to the closest Marina.

Call 999 for emergency services if advised by the Parade team. Please stress to emergency services to go to the Marina where the Parade team will be going. Share with them the contact numbers for the Rally team.

Call the Marina which the Parade team will be going to and inform them of the incident. Share with them the numbers for the Parade team.

Navigation if taking the casualty in your own vessel.

Please use the coordinates provided to you for this Rally to locate the nearest Marina. Call 999 for emergency services. Please stress to emergency services to go to the Marina where you will be going.

Call the Marina which you will be going to and inform them of the incident.

Travel at a safe speed to avoid further distress to the injured person on board.

# A FINAL NOTE FOR THE WEEKEND

---

**DUBAI  
ISLANDS**  
Marina

**PALM  
JUMEIRAH**  
Marina

**JEEPERS**  
*EDITION*

**MARINAS**  
by PORTO MONTENEGRO

With over 90 boats on the water please navigate cautiously and follow the instructions from the on-water team.

We will be monitoring the weather forecast daily leading up to the parade and we will keep you updated of any potential issues.

We hope you are excited about the parade and we look forward to seeing you at the Palm East Anchorage designated meeting point at 1330 on Saturday, 25<sup>th</sup> October 2025.

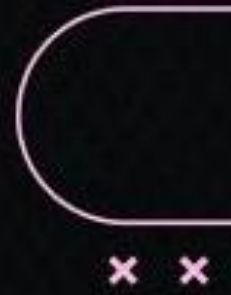
## TOGETHER IN PINK.

**Kind Regards,  
Pink Parade Team, Palm Jumeriah.**



GET READY TO :

- WEAR PINK
- DECORATE YOUR JEEP & BOAT PINK
- PRIZES AND GIVAWAYS



# EVENT PARTNERS

