



**Pink Parades Race (DOSC to Dubai Islands Marina)-25<sup>th</sup> October 2025**

**The Course:**

The courses to be sailed is detailed below.

Mark rounding directions are given in brackets with (P) meaning Port Rounding and (S) meaning Starboard Rounding.

**Course for all classes (22NM) – Start 1200HRS**

Start [Committee Boat (S), Pin (P)] (Approximate location in course information)

DHA (S)

DB1 (S)

Dubai Approach Gate (as specified in gate description)

Finish @ ‘Dubai Islands Marina Line’ Line W – E

**Start boat will be using flag Oscar for all boats. There is no requirement to fly a class flag.**

**If any mark is missing (not visible within 100m of its given position), then the mark should be considered a waypoint and the GPS coordinate should be laid on the given side. Any missing marks should be declared with your finish time.**

**Committee boat will be using VHF Channel 08.**

‘Dubai Islands Marina Line, W-E’ denotes crossing the line from West to East.

**Mark Information**

Abbreviation	Name	Mark Type	Lat.	Long.
	Approximate Location of Start Line		25° 10.349' N	55° 10.479' E
DHA	Dubai Harbour Approach	Safe Water Mark	25° 11.962'N	55° 06.352'E
DB1	DB1	North Cardinal	25° 17.002'N	55° 3.675'E
DA	Dubai Approach	Safe Water Mark	25° 18.515'N	55° 9.969'E
DISW	Dubai Islands Safe Water	Safe Water Mark	25° 18.996'N	55° 16.598'E



**Duhai Approach Gate:**

All boats shall pass through the Dubai Approach Gate [**Gate**]. Boats must cross the Gate from West to East through the line of longitude 55° 9.969'E bounded by DA to the south, extending approximately 500 metres North bounded by Waypoint 1. (Angle of 000 degrees, back bearing of 180 degrees).

All boats shall be responsible for recording a GPS time-stamped (e.g. photographic) record of when and where they crossed the gate.

Boats are required to email their gate time to [sailingadmin@doscuae.com](mailto:sailingadmin@doscuae.com) as well as their finish line time, where applicable, within 60 minutes of finishing.

Virtual Gate

Mark	Latitude	Longitude
Waypoint 1 (to port)	25° 18.789' N	55° 9.969'E
DA (to starboard)	25° 18.515'N	55° 9.969'E



### Finish @ the ‘Dubai Islands Marina Line’

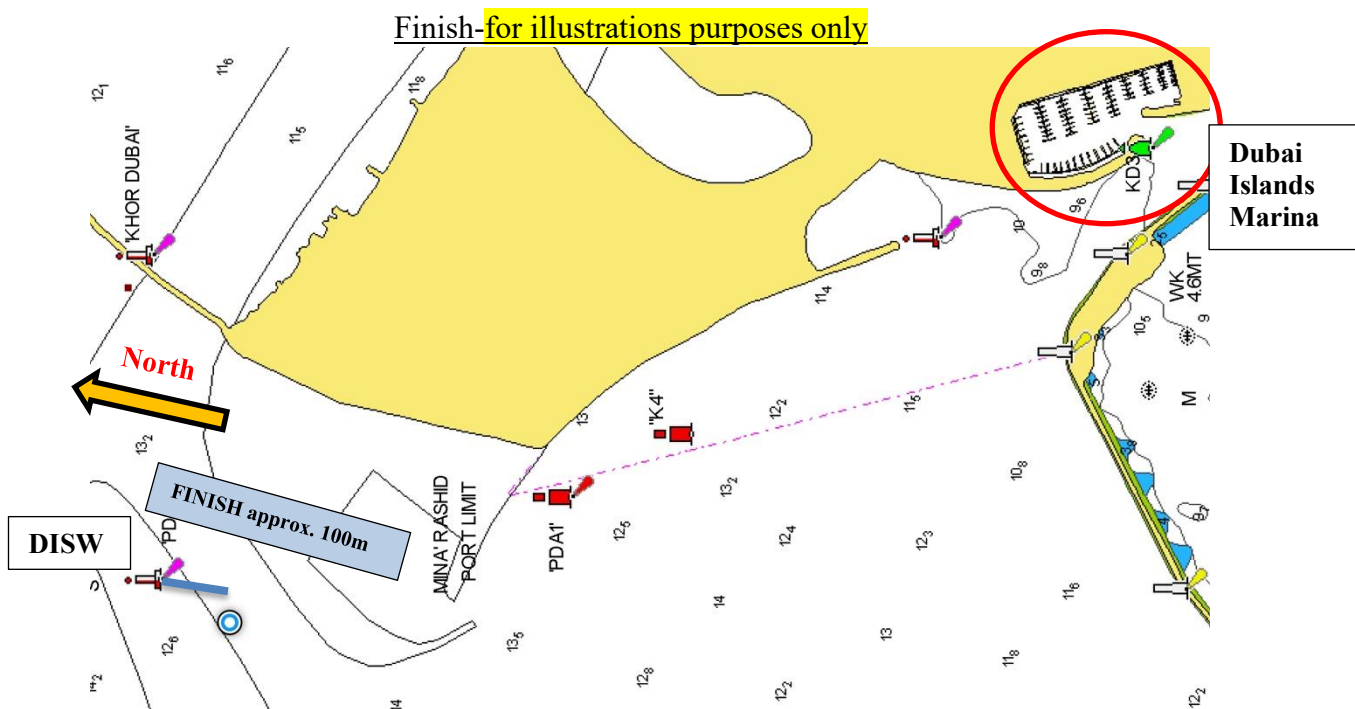
This race will be finished at the ‘Dubai Islands Marina Line’.

Boats must finish West to East through the line of longitude 55°16.598'E bounded by DISW to the North, extending 100 metres south at an angle of 180 degrees (back bearing of 000 degrees). The limit of the line may be marked by a Finish Boat or an Outer Distance boat/mark Mark and boats should finish within this if present.

If the DISW safe water mark is not visible within 100m of the GPS location, finish using the mark’s coordinate as a waypoint, at the angle and distance specified above.

Competitors must take their own finish time regardless of whether there is a finish boat on station or not, using GPS time and send it to [sailingadmin@doscuae.com](mailto:sailingadmin@doscuae.com) within 60 minutes of finishing in the HH:MM:SS format also attaching a photo of their GPS position/finishing time.

**Watch for shallow areas when approaching the finish – you are responsible for your own navigation.**



**Approximate Course Diagram for Illustration purposes only**



Scoring Change to Sailing Instructions

SI 18.3 is added

Boats that do not finish within the time limit or start their engines after passing the gate shall be finished at the gate providing they pass the gate under sail within the time limit. A boat that finishes the complete course within the time limit shall not be placed below one that does not.