

# Bill Nelson Offshore Race & Rally

Competitors Briefing: 8 pm, 26<sup>th</sup> November, The Loft

# Race Docs

Not CAT 3  
Life raft mandatory

Event Calendar page is the official  
Notice Board

Sailing Instructions will  
be published Thursday  
27<sup>th</sup> by 1700

Course to be published  
Thursday 27<sup>th</sup> by  
17:00pm

Upcoming

## Bill Nelson Offshore Race (DOSC to ADMSC)

 Start Date: Fri, November 28       End Date: Sat, November 29       Location: DOSC

 Event Type: Bill Nelson Offshore Race (DOSC to ADMSC)

Document Name	Action
Notice of Race V3	 <a href="#">View Link</a>

# Rules

- Competitors entering the race must carry a Life raft – failure to do so shall result in a score of DNE without hearing.
- Adequate Personal flotation devices with lights shall be carried for each person on board. Tethers and spray hoods are strongly recommended for each PFD.
- Between Sunrise and Sunset, the event will be governed by the rules as defined in the Racing Rules of Sailing (RRS).
- Between Sunset and Sunrise the event will be governed by the rules as defined in the International Regulations for Prevention of Collisions At Sea (IRPCS). This supersedes NOR 1.3.

# START

- Start Line between a Rib (Blue Whale) and Inflatable Pin Mark to the Northeast side of the exclusion zone
- Start with committee boat to Starboard / Pin to Port (Blue Whale)
- Combined Start for all classes
- Class Flag OSCAR will be used to start all classes.
- Please listen on VHF Ch.8 for sound signals/instructions.
- OCS Boats may be announced on VHF Channel 08.
- Warning Signal not before 16:55hrs.
- Start not before 17:00hrs.

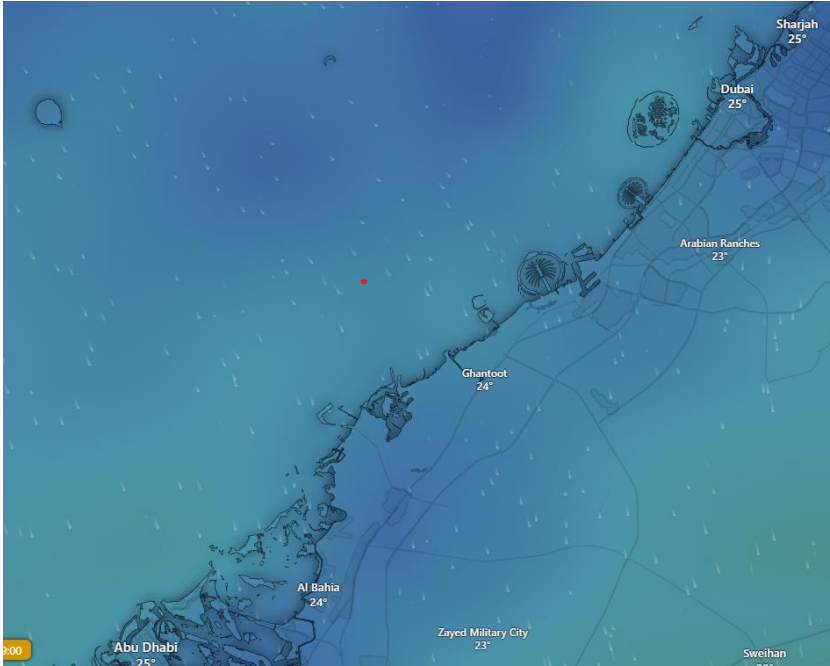
# Finish

Will be self declaration.

Email: [sailingadmin@doscuae.com](mailto:sailingadmin@doscuae.com)

Please submit finish time at the earliest opportunity

# Forecast



	Friday 28								Saturday 29								Sunday 30								Monday 1				
22	1	4	7	10	13	16	19	22	1	4	7	10	13	16	19	22	1	4	7	10	13	16	19	22	1	4	7	10	16
☾	☾	☾	☀	☀	☀	☀	☾	☾	☾	☁	☀	☀	☀	☀	☾	☾	☾	☾	☀	☀	☀	☀	☾	☾	☾	☾	☀	☀	☀
26°	26°	23°	22°	24°	25°	25°	26°	26°	25°	22°	22°	24°	25°	25°	25°	25°	24°	23°	22°	23°	25°	25°	25°	25°	24°	23°	22°	23°	25°
5	3	6	6	4	4	5	6	4	2	7	4	4	3	4	4	4	4	5	5	6	3	6	7	5	4	4	5	4	5
9	8	10	11	10	8	9	10	9	6	11	11	9	8	7	8	7	8	9	9	10	10	10	11	10	8	8	8	10	9
↖	↘	↖	↖	↗	↘	↘	↘	↘	↖	↖	↖	↗	↘	↘	↘	↘	↖	↖	↖	↖	↘	↘	↘	↘	↖	↖	↗	↗	↖

# Course



- If any mark is missing (not visible within 500m of its given position), then the mark should be considered a waypoint and the GPS coordinate should be laid as appropriate. Any missing marks should be declared with your finish time.

### Finish @ the 'Bill Nelson Finish' Line

Fairway Buoy (FWB)–Starboard Lateral Mark:

Latitude: 24° 29.528'N

Longitude: 54° 18.028'E

Bearing: 250°

Distance: 0.2NM

The Bill Nelson Finish is a line extending from FWB at a bearing of 250° and distance of 0.2NM.

Boats are required to email their finish time (HH:MM:SS) and GPS position to [sailingadmin@doscuae.com](mailto:sailingadmin@doscuae.com) within 60 minutes of finishing.

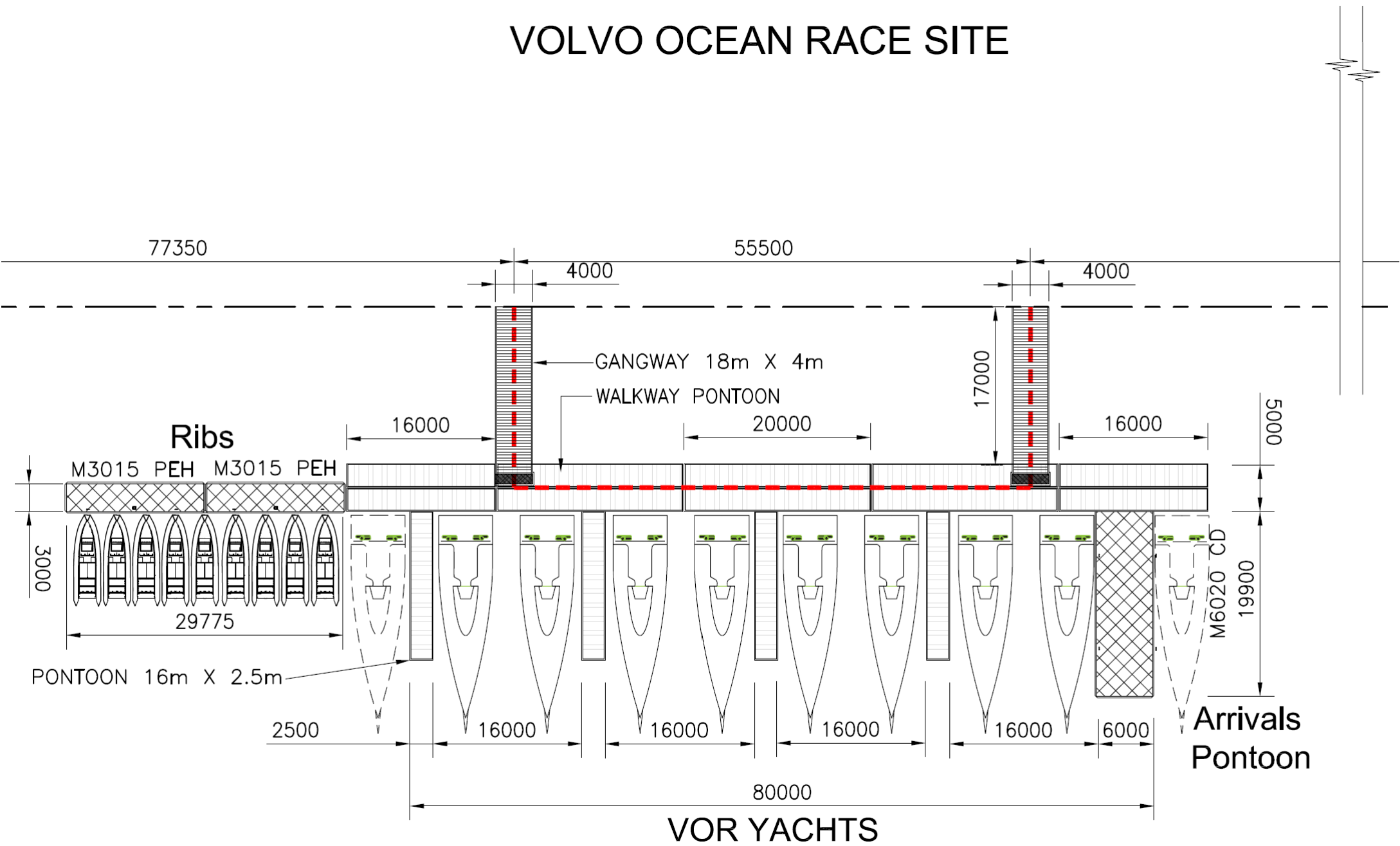




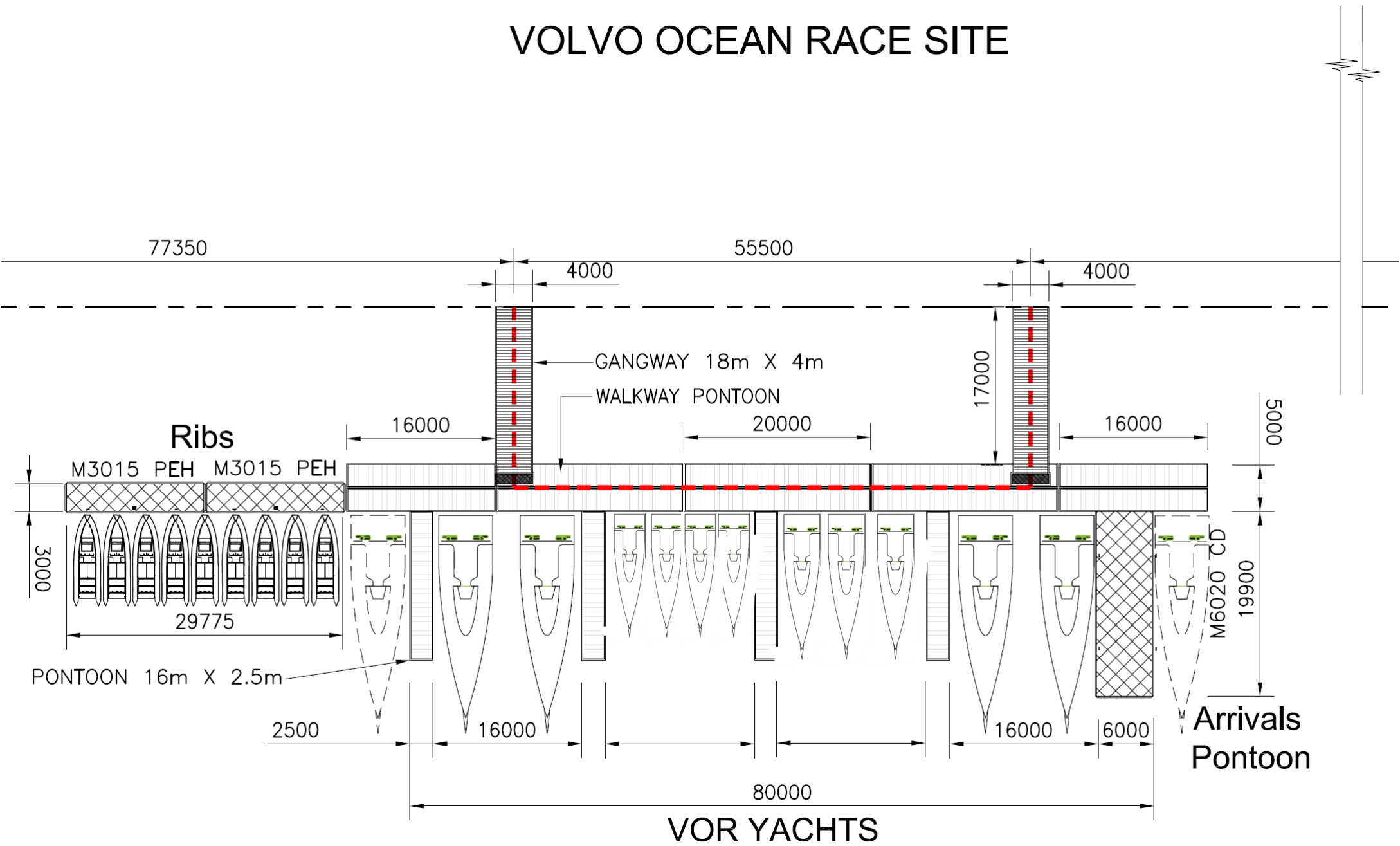
Image © 2024 Airbus



# VOLVO OCEAN RACE SITE



# VOLVO OCEAN RACE SITE





Approx 1.5km from ADMSC pontoons to Escape Beach Bar Club  
(Radisson Corniche)

# Additional Information

- **Saturday 7:00 PM:** Race time limit
- **Saturday 18:00 - 21:00 PM:** Social evening at Escape Beach Bar, Radisson Blu, Corniche, Abu Dhabi (Approx. 1.5 km / 20 minutes walk from the pontoons).
- **Monday Midday 1<sup>st</sup> of December:** Berthing ends at Abu Dhabi Marine Sports Club
- No shore power/water but showers and toilets available at ADMSC.
- Vehicle access/parking near the pontoons is available at ADMSC.
- Prizegiving during Winter regatta Sunday 14<sup>th</sup> December

\*Reminder this is a government club so please be respectful

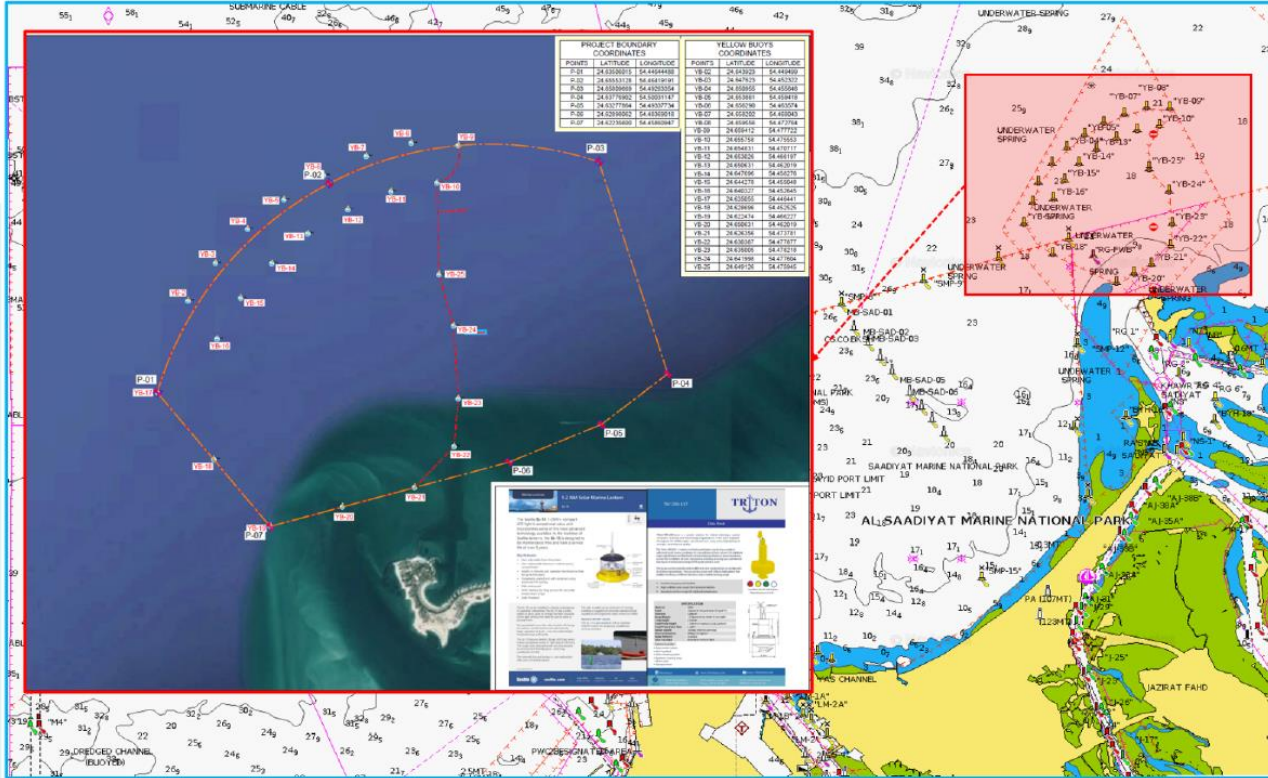
# VHF Channels Along the Coastline

- **Jebel Ali Port Control**
  - VHF Ch. 16 / 69
  - Request permission to cross the shipping channel ~1 NM before channel marks
  - State which mark number you are at (shown on charts)
- **Port Khalifa**
  - VHF Ch. 16 / 13
  - If crossing near the port, request permission 1–2 NM before channel marks
- **Mina Zayed VTS**
  - VHF Ch. 16 / 67
  - Controls Mina Zayed port channel + approach to Yas Marina
  - Request permission to enter Yas Channel 2–3 NM out
- **Arrival Procedures – Yas Marina**
  - VHF Ch. 16 / 8
  - Call the marina ~30 minutes before arrival
  - From 1–4 December, all boats must complete safety inspection & clearance on the outer pontoon
  - Security closes at 17:00 — arriving after this means you must remain overnight on the pontoon

# Temporary Exclusion zones

الخرطة التوضيحية - منطقة الأعمال البحرية

**Illustrative Map - The Marine Works Area**



YELLOW BUOYS COORDINATES

**Illustrative Map**



Acknowledgments | Not to be used

Any Questions?