



Notice to Competitors #1-Version 2 – Posted 28/11/202

Bill Nelson Offshore Race-Offshore Series-2025-28th November 2025

The Course:

The courses to be sailed is detailed below.

Course for all classes – First Warning Signal 1700HRS

Start [Committee Boat (S), Pin (P)] (North Side of the Exclusion Zone)

JA (P)

SH3 (P)

Virtual Gate 1

EX1 (P)

EX4 (P)

Virtual Gate 2

Finish @ 'Bill Nelson Finish' Line

Start boat will be using flag Oscar for all boats. There is no requirement to fly a class flag.

If any mark is missing (not visible within 500m of its given position), then the mark should be considered a waypoint and the GPS coordinate should be laid as appropriate. Any missing marks should be declared with your finish time.

Committee boat will be using VHF Channel 08.

All boats shall pass through each virtual gate. All boats shall be responsible for recording a GPS time-stamped (e.g. photographic) record of when and where they crossed the gate.

Boats are required to email their gate time (HH:MM:SS) and GPS position to sailingadmin@doscuae.com as well as their finish line time, where applicable, within 60 minutes of finishing/or retiring.

Mark Information

Abbreviation	Name	Mark Type	Lat	Long
JA	Jebel Ali (Start)	Start Line / Safe Water Mark	25° 11.163'N	54° 53.092'E
SH3	Sahar 3	Yellow Special Mark	25° 3.835'N	54° 43.852'E
KPFW	Khalifa Port Fairway	Safe Water Mark	24° 56.789'N	54° 34.689'E
EX1	Exclusion Zone '1'	Yellow Special Mark	24° 51.077'N	54° 29.008'E
EX4	Exclusion Zone '4'	Yellow Special Mark	24° 46.034'N	54° 23.765'E
MZPF	Mina Zayed Port Fairway	Safe Water Mark	24° 39.264'N	54° 14.289'E
FWB	Fairway Buoy	Safe Water Mark	24° 29.528'N	54° 18.028'E

Virtual gate 1

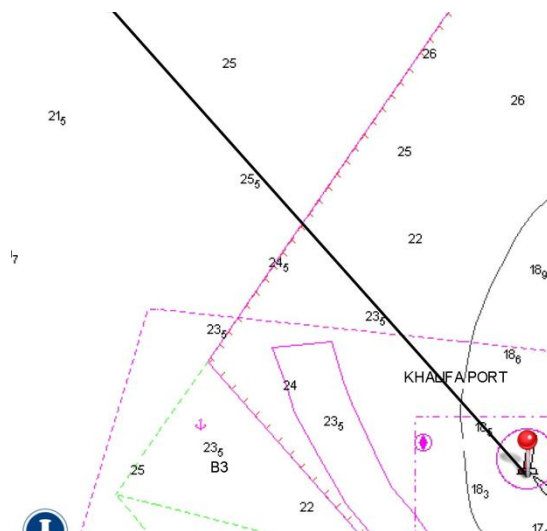
Khalifa Port Fairway – Safe Water Mark:

Latitude: 24° 56.789'N

Longitude: 54° 34.689'E

Bearing: 318°

The virtual gate 1 is a line extending from KPFW at a bearing of 318°.



Virtual gate 2

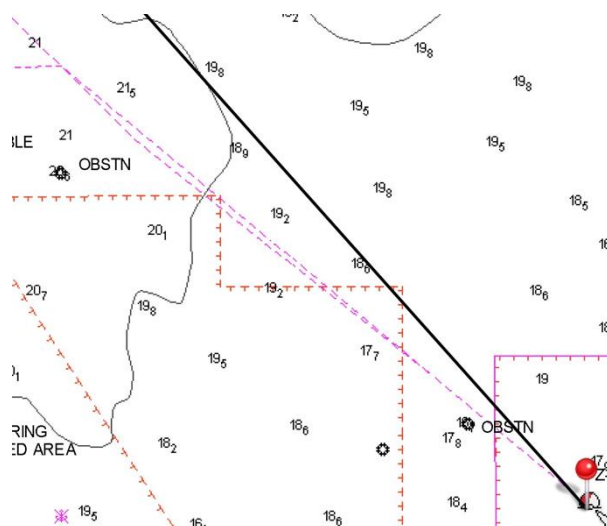
Mina Zayed Port Fairway– Safe Water Mark:

Latitude: 24° 39.264'N

Longitude: 54° 14.289'E

Bearing: 318°

The virtual gate 2 is a line extending from MZPF at a bearing of 318°.





Finish @ the 'Bill Nelson Finish' Line

Fairway Buoy (FWB)–Starboard Lateral Mark:

Latitude: 24° 29.528'N

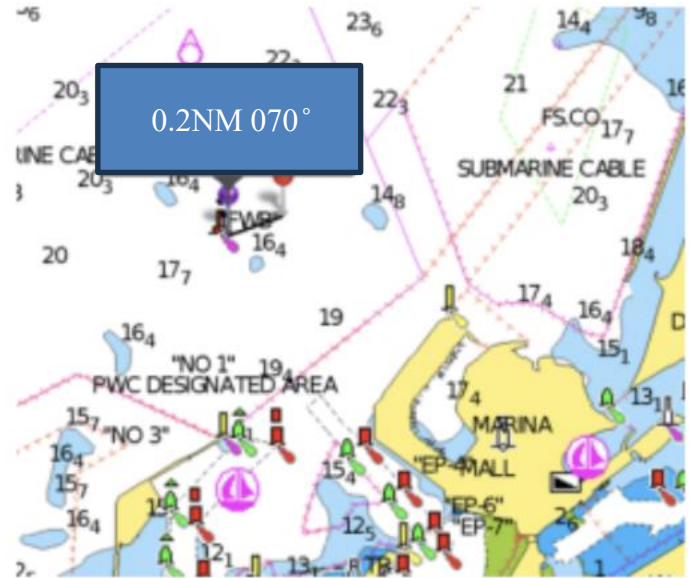
Longitude: 54° 18.028'E

Bearing: 070°

Distance: 0.2NM

The Bill Nelson Finish is a line extending from FWB at a bearing of 070° and distance of 0.2NM.

Boats are required to email their finish time (HH:MM:SS) and GPS position to sailingadmin@doscuae.com within 60 minutes of finishing.



All Diagrams are for illustration purposes only

