

Notice to Competitors #1-Version 1 – Posted 27/02/2026

DOSC to DOSC-Short-Offshore Series -28th February 2026

The Course:

The courses to be sailed is detailed below.

(P) denotes a rounding to port. (S) denotes a rounding to Starboard.

‘N-S’ denotes crossing a line from North to South.

Course for all classes – First Warning Signal 1200HRS

Start [Committee Boat (S), Pin (P)] (North Side of the Exclusion Zone)

Virtual Gate 1 (DHSE)

Virtual Gate 2 (DHA)

Virtual Gate 3 (DA)

Finish @ ‘DOSC to DOSC’ Line – N-S

Start boat will be using flag Oscar for all boats. There is no requirement to fly a class flag.

If any mark is missing (not visible within 500m of its given position), then the mark should be considered a waypoint and the GPS coordinate should be laid as appropriate. Any missing marks should be declared with your finish time.

Committee boat will be using VHF Channel 08.

All boats shall pass through each virtual gate. All boats shall be responsible for recording a GPS time-stamped (e.g. photographic) record of when and where they crossed the gate. Boats may use their gate time to retire early and be placed as described in the Sailing Instructions scoring setion.

Boats are required to email their gate time (HH:MM:SS) and GPS position to sailingadmin@doscuae.com as well as their finish line time, where applicable, within 60 minutes of finishing/or retiring.

Mark Information

Abbreviation	Name	Mark Type	Lat	Long
DHSE	Dubai Harbour SE	Directional Sector Mark	25° 06.116'N	55° 06.208'E
DHA	Dubai Harbour Approach	Safe Water Mark	25° 11.962'N	55° 06.352'E
DA	Dubai Approach	Safe Water Mark	25° 18.515'N	55° 09.969'E
USI 22	USI 22	Special Mark (Exclusion Marker)	25° 11.525' N	55° 12.900' E

All Diagrams are for illustration purposes only

Virtual gate 1

DHSE - Dubai Harbour SE - Directional Sector Mark:

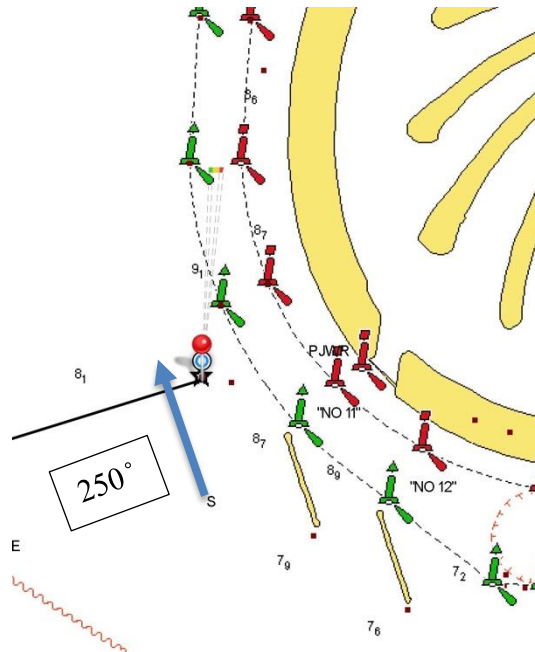
Latitude: 25° 06.116'N

Longitude: 55° 06.208'E

Bearing: 250°

The virtual gate 1 is a line extending from DHSE at a bearing of 250° and must be crossed with DHSE kept to starboard.

DHSE must be rounded to starboard.



Virtual gate 2

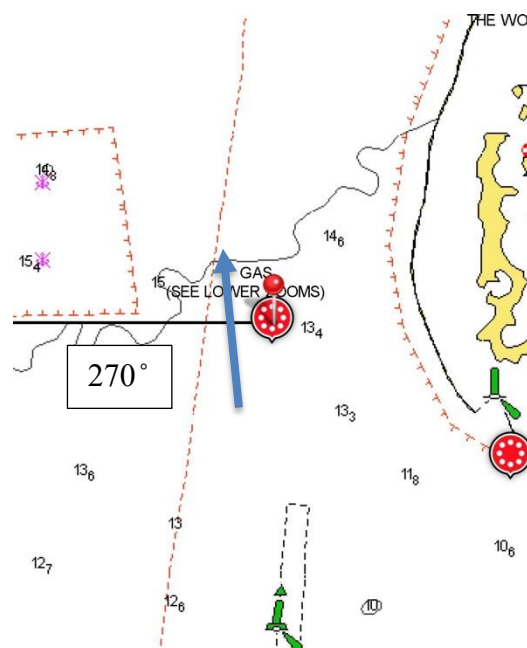
DHA - Dubai Harbour Approach - Safe Water Mark:

Latitude: 25° 11.962'N

Longitude: 55° 06.352'E

Bearing: 270°

The virtual gate 2 is a line extending from DHA at a bearing of 270° and must be crossed with DHA kept to starboard.



Virtual gate 3

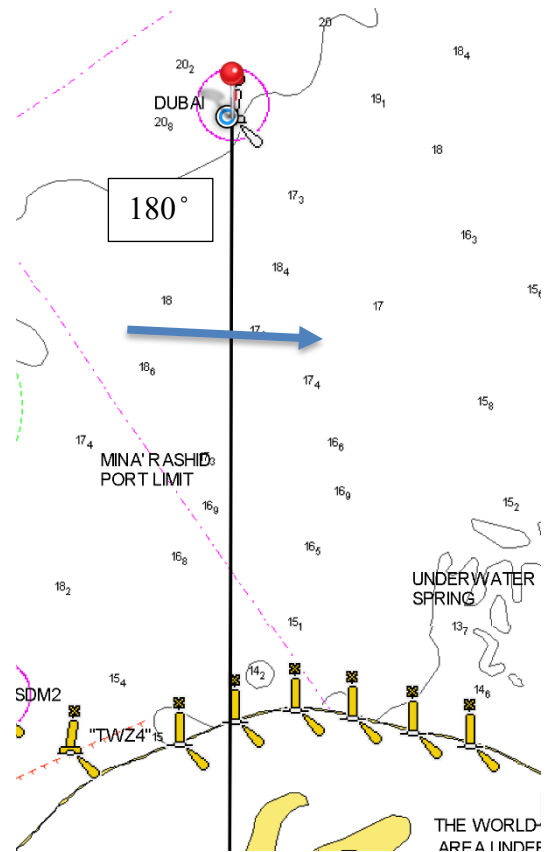
DA - Dubai Approach- Safe Water Mark:

Latitude: 25° 18.515'N

Longitude: 55° 09.969'E

Bearing: 180°

The virtual gate 3 is a line extending from DA at a bearing of 180° and must be crossed with DA kept to port.



Finish @ the 'DOSC to DOSC' Line

USI22 - Special Marker:

Latitude: 25° 11.525' N

Longitude: 55° 12.900' E

Bearing: 080°

Distance: 500m/0.27nm.

The 'DOSC to DOSC' line is a line extending from USI22 at a bearing of 80° and distance of 500m/0.27nm.



Boats are required to email their finish time (HH:MM:SS) and GPS position to sailingadmin@doscuae.com within 60 minutes of finishing.



All Diagrams are for **Illustration purposes only**

