

**AGMC Geely Commodore’s Cup Coastal**  
**Race Day 4: 21<sup>st</sup> February 2026**  
**Coastal Courses:**

The courses to be sailed are detailed below.

Mark rounding directions are given in brackets with (P) meaning Port Rounding and (S) meaning Starboard Rounding.

**The Course for IRC 1, 2 & Multihull:**

- Start [Committee Boat (S), Pin (P)]
- AGMC (S)
- HSWC (P)
- KBC1 (S)
- UNSE (P)
- GE1 (P)
- UN (S)
- MB3 (P)
- KBC2 (P)
- BG (S)
- Finish mark (P), RCV(S)



**\*Diagram is for illustration purposes only**

**The Course for IRC 3, J22 OD & IRC CRUISER:**

Start [Committee Boat (S), Pin (P)]

AGMC (S)

KBC1 (S)

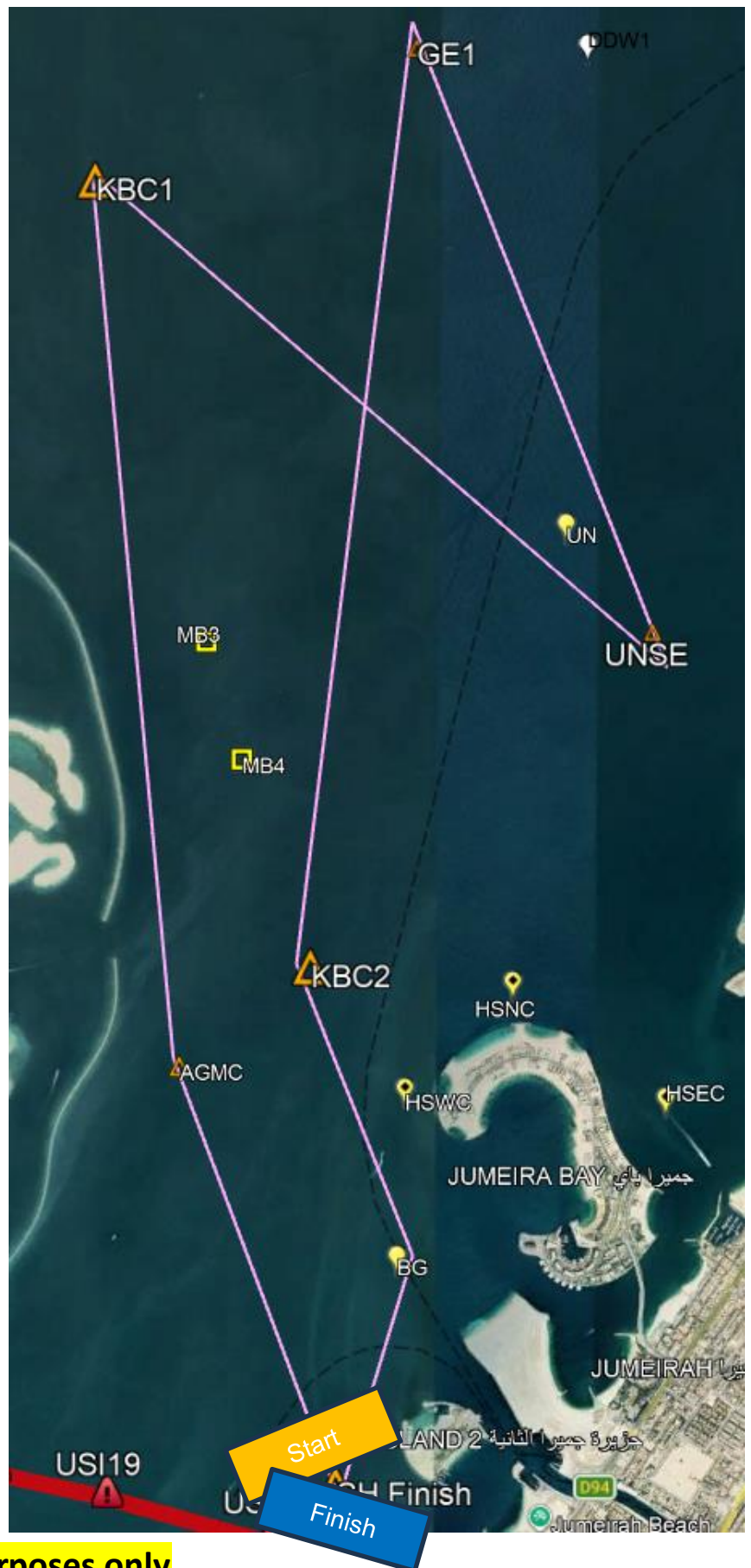
UNSE (P)

GE1 (P)

KBC2 (P)

BG (S)

Finish mark (P), RCV(S)

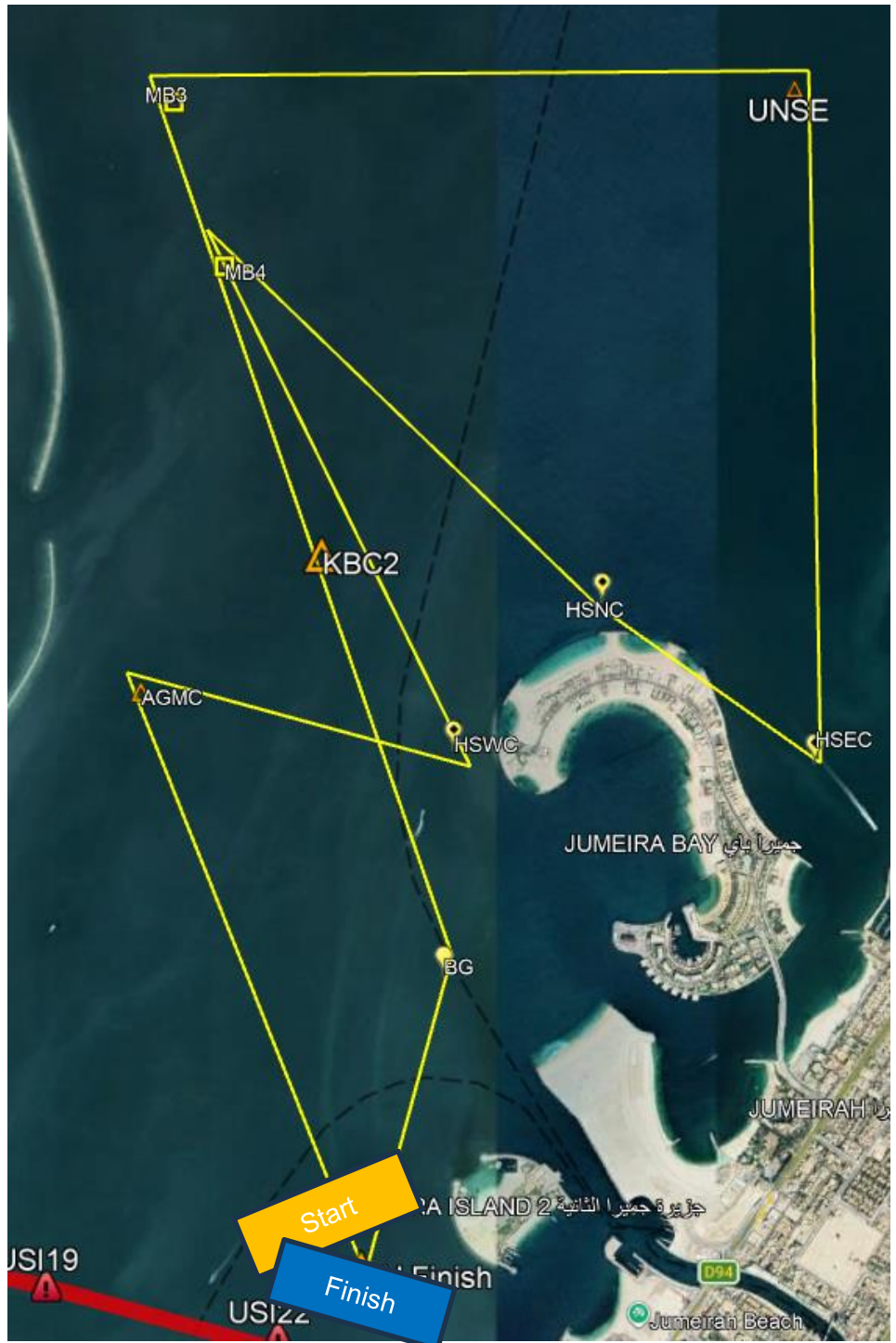


**\*Diagram is for illustration purposes only**

**The Course for Club Class:**

Start [Committee Boat (S), Pin (P)]

- AGMC (S)
- HSWC (P)
- MB4 (S)
- HSEC (P)
- UNSE (P)
- MB3 (P)
- KBC2 (P)
- BG (S)
- Finish mark (P), RCV(S)



**\*Diagram is for illustration purposes only**

**Mark Information**

<b>Abbreviation</b>	<b>Name</b>	<b>Mark Type</b>	<b>Lat</b>	<b>Long</b>
AGMC	AGMC	Laid Inflatable	25° 13.245'N	55° 12.509'E
HSWC	Horseshoe West Cardinal	West Cardinal	25° 13.092'N	55° 13.400'E
KBC1	Keelboat Coastal 1	Laid Inflatable	25°16.430'N	55°12.146'E
UNSE	Union South East	Laid Inflatable	25° 14.801' N	55° 14.373' E
GE1	Geely 1	Laid Inflatable	25° 16.913' N	55° 13.423' E
UN	Union	Yellow Special Mark	25° 15.171'N	55° 14.027'E
MB3	Mooring Buoy 3	Fixed Mooring Buoy	25° 14.766'N	55° 12.602'E
KBC2	Keelboat Coastal 2	Laid Inflatable	25°13.597'N	55°13.025'E
BG	Bulgari Bay	Yellow Special Mark	25° 12.550'N	55° 13.372'E
MB4	Mooring Buoy 4	Fixed Mooring Buoy	25° 14.342'N	55° 12.746'E
HSEC	Horseshore East Cardinal	East Cardinal	25° 13.058'N	55° 14.430'E
FINISH			25°11.756'N	55°13.138'E

\*Laid inflatables may be any colour or shape and may be smart marks. The colour and shape of marks may be communicated via VHF Channel 8.

\*If a mark happens to be missing, please sail around the coordinate given in the correct direction.