

Notice to Competitors #2-Change to Course

Virtual Gate 3 is changed to:

Virtual gate 3

DA - Dubai Approach- Safe Water Mark:

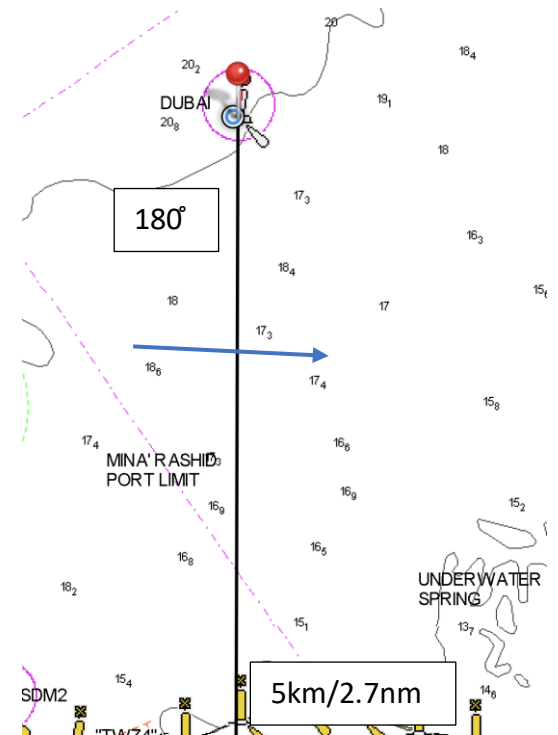
Latitude: 25° 18.515'N

Longitude: 55° 09.969'E

Bearing: 180°

Distance: 5km/2.7nm

The virtual gate 3 is a line extending from DA at a bearing of 180° and distance of 5km/2.7nm. The line must be crossed with DA kept to port.



Race Committee