



EID Pursuit Race - The Course

Mark	Type	Rounding	Approx. Location	
USI-22	Yellow Special Mark	NA	25°11.525'N	55°12.899'E
SSS	Orange Inflatable	NA	25°11.588'N	55°13.198'E
BG	Yellow Special Mark	Port	25°12.550'N	55°13.372'E
HC4	Orange Inflatable	Port	25°12.606'N	55°12.925'E
JR	Orange Inflatable	Port	25°11.907'N	55°12.521'E
HC1	Orange Inflatable	Port	25°11.766'N	55°13.038'E

GPS Positions are approximates only

Start-Start between USI-22 (Yellow Special Mark) and the Orange Inflatable SSS.

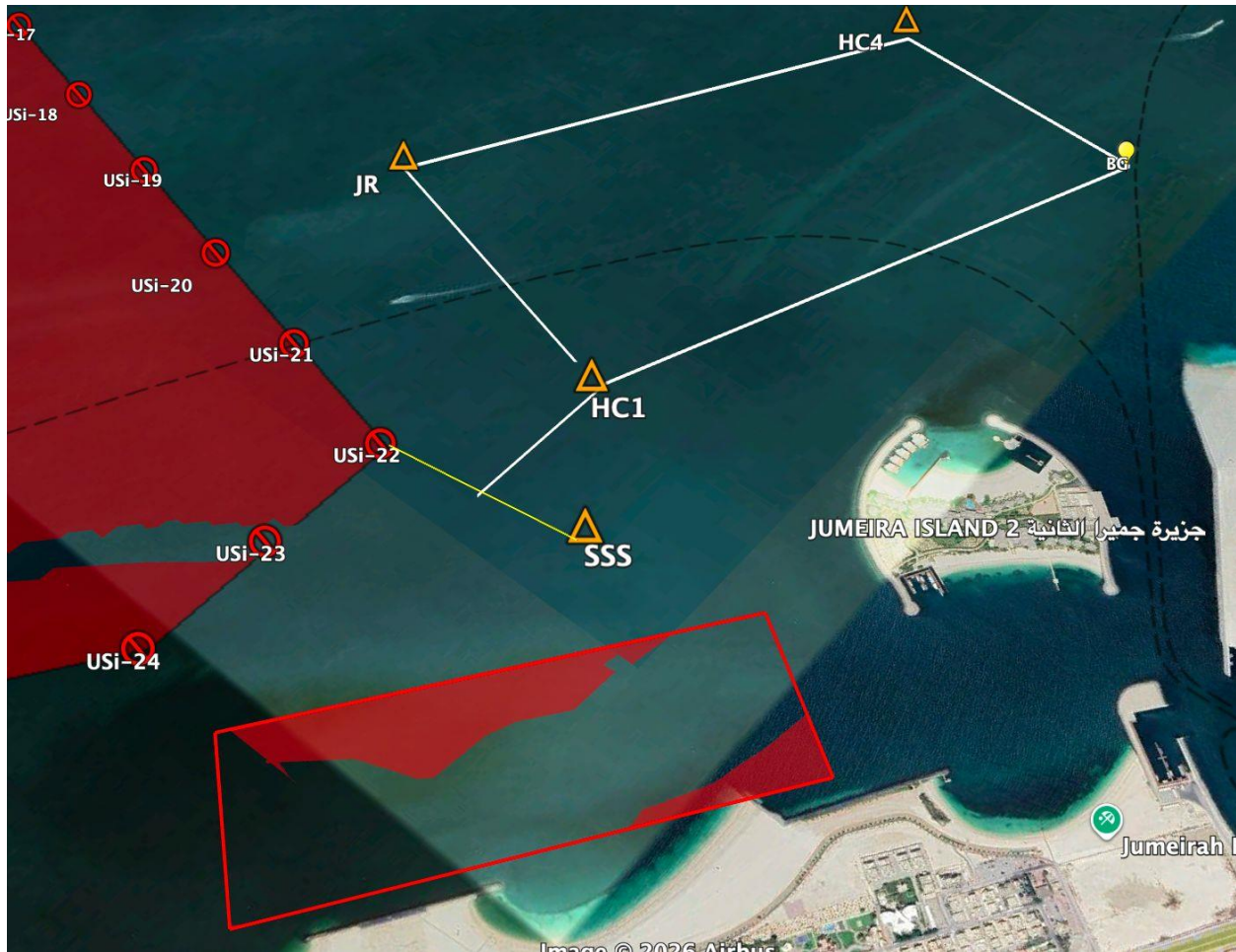
Repeat the following till 4pm:

BG (P)

HC4 (P)

JR (P)

HC1 (P)



For Illustration Purposes Only

RRS 27.3 and 32 are changed to include: "If a government instruction, directive, or official communication, including an Emergency Public Safety Alert, is issued that affects the safety or legality of starting or continuing a race, the race shall be considered abandoned immediately, without the need for a signal or further notice from the Race Committee."