

## Keelboat and Multihull Coastal Race

11<sup>th</sup> April 2026

### Coastal Courses:

The courses to be sailed are detailed below.

Mark rounding directions are given in brackets with (P) meaning Port Rounding and (S) meaning Starboard Rounding.

### The Course for IRC 1, 2 & Multihull:

Start [Committee (S), Pin (P)]

A (S)

HSWC (P)

MB4 (P)

BG (S)

AGMC (S)

HSNC (S)

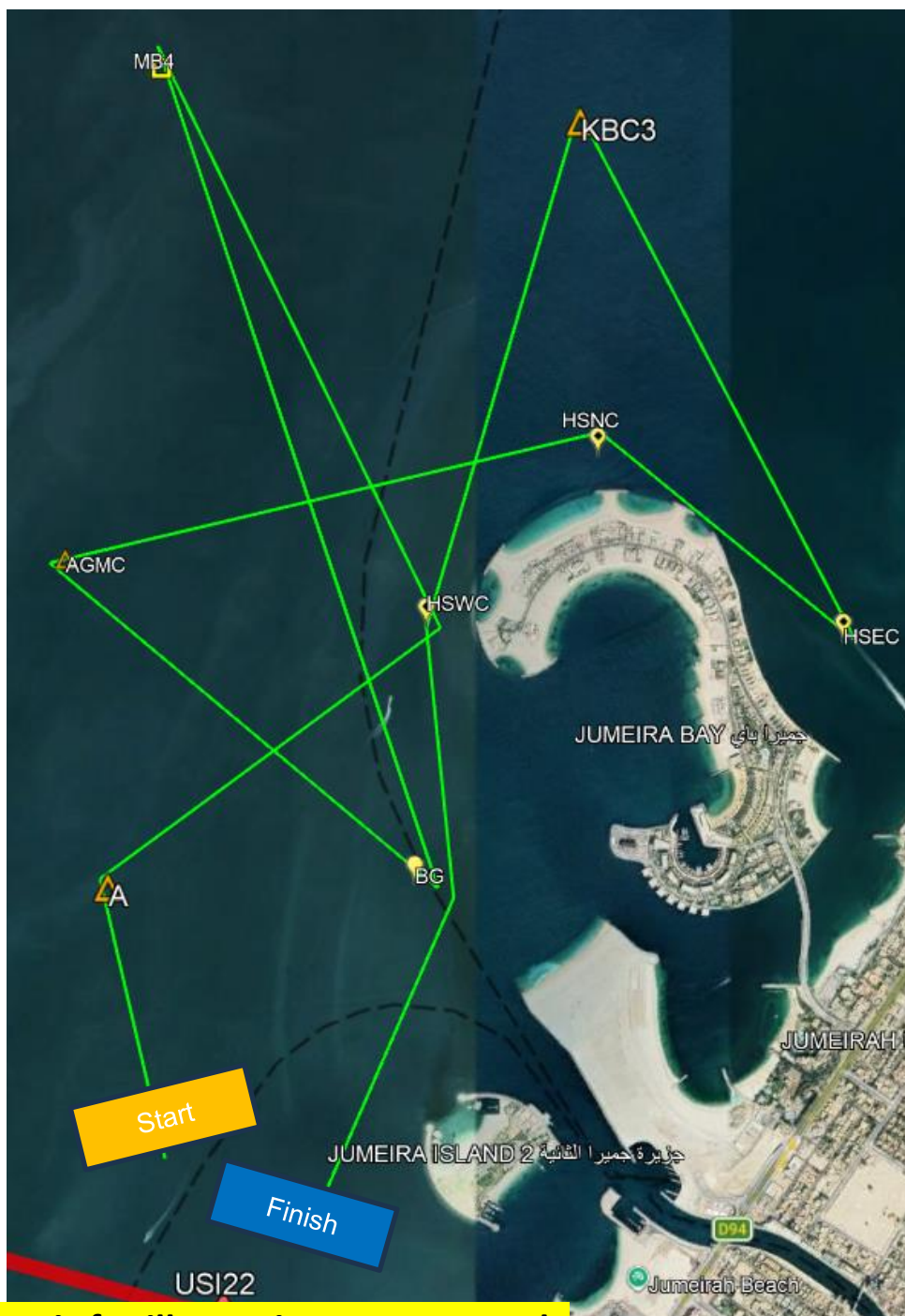
HSEC (P)

KBC3 (P)

HSWC (P)

BG (S)

Finish [Committee (S), Pin (P)]



**\*Diagram is for illustration purposes only**

**The Course for IRC 3, J22 OD, SB20 OD & IRC CRUISER:**

Start [Committee Boat (S), Pin (P)]

A (S)

HSWC (P)

MB4 (P)

BG (S)

HSWC (S)

HSNC (S)

HSEC (P)

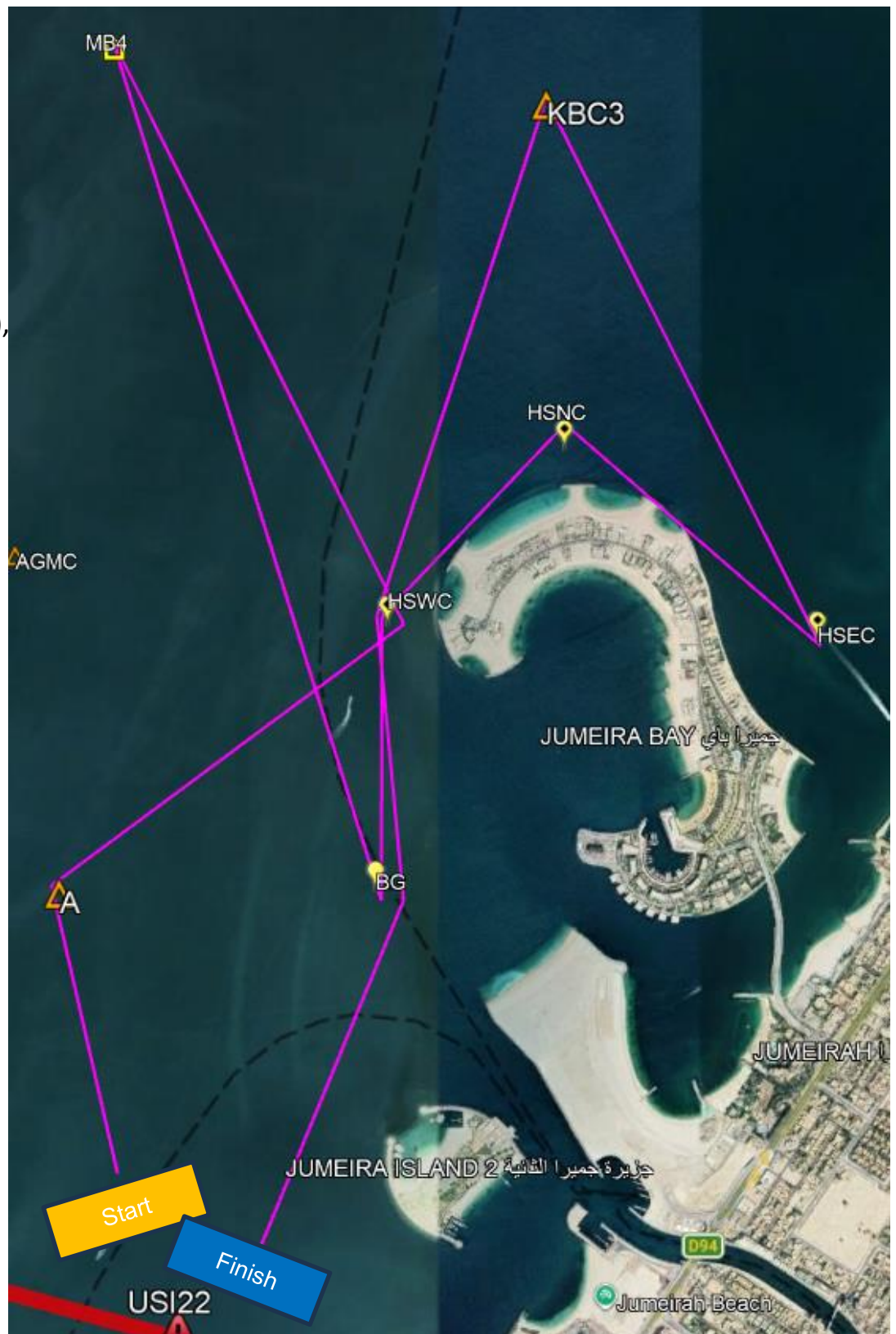
KBC3 (P)

HSWC (P)

BG (S)

Finish [Committee (S),

Pin (P)]



**\*Diagram is for illustration purposes only**

### The Course for Club Class:

Start [Committee Boat (S), Pin (P)]

A (S)

BG (P)

HSWC (S)

HSNC (S)

HSEC (P)

KBC3 (P)

MB4 (P)

AGMC (P)

BG (S)

Finish [Committee (S),  
Pin (P)]



**\*Diagram is for illustration purposes only**

**Mark Information**

<b>Abbreviation</b>	<b>Name</b>	<b>Mark Type</b>	<b>Lat</b>	<b>Long</b>
A	First Mark	Black Cilinder		
HSWC	Horseshoe West Cardinal	West Cardinal	25° 13.092'N	55° 13.400'E
MB4	Mooring Buoy 4	Fixed Mooring Buoy	25° 14.342'N	55° 12.746'E
BG	Bulgari Bay	Yellow Special Mark	25° 12.550'N	55° 13.372'E
AGMC	AGMC	Green Cilinder	25° 13.245'N	55° 12.509'E
HSNC	Horseshoe North Cardinal	North Cardinal	25° 13.473'N	55° 13.824'E
HSEC	Horseshore East Cardinal	East Cardinal	25° 13.058'N	55° 14.430'E
KBC3	Keelboat Coastal 3	Yellow Cilinder	25° 14.222'N	55°13.025'E
HSWC	Horseshoe West Cardinal	West Cardinal	25° 13.092'N	55° 13.400'E
FINISH	Finish pin	Orange Triangle	25° 11.733'N	55° 13.105'E

\*Laid inflatables are described in the mark information. A change of the colour and shape of marks may be communicated via VHF Channel 8.

\*If a mark happens to be missing, please sail around the coordinate given in the correct direction.