

Shorthanded Coastal Race

19th April 2026

1 start, all classes, 5-4-1-Go

All classes to start under class flag Oscar (No requirement to display course flag).

All communication VHF Channel 08

Mark rounding directions are given in brackets with (P) meaning Port Rounding and (S) meaning Starboard Rounding.

The Course for IRC Racer/Cruiser, IRC Day Boats, Multihull, SB20 OD & Club Class.

Start [Committee Boat (S), BG (P)]

AGMC (S)

HSWC (P)

MB4 (S)

HSNC (P)

KBC3 (P)

MB3 (P)

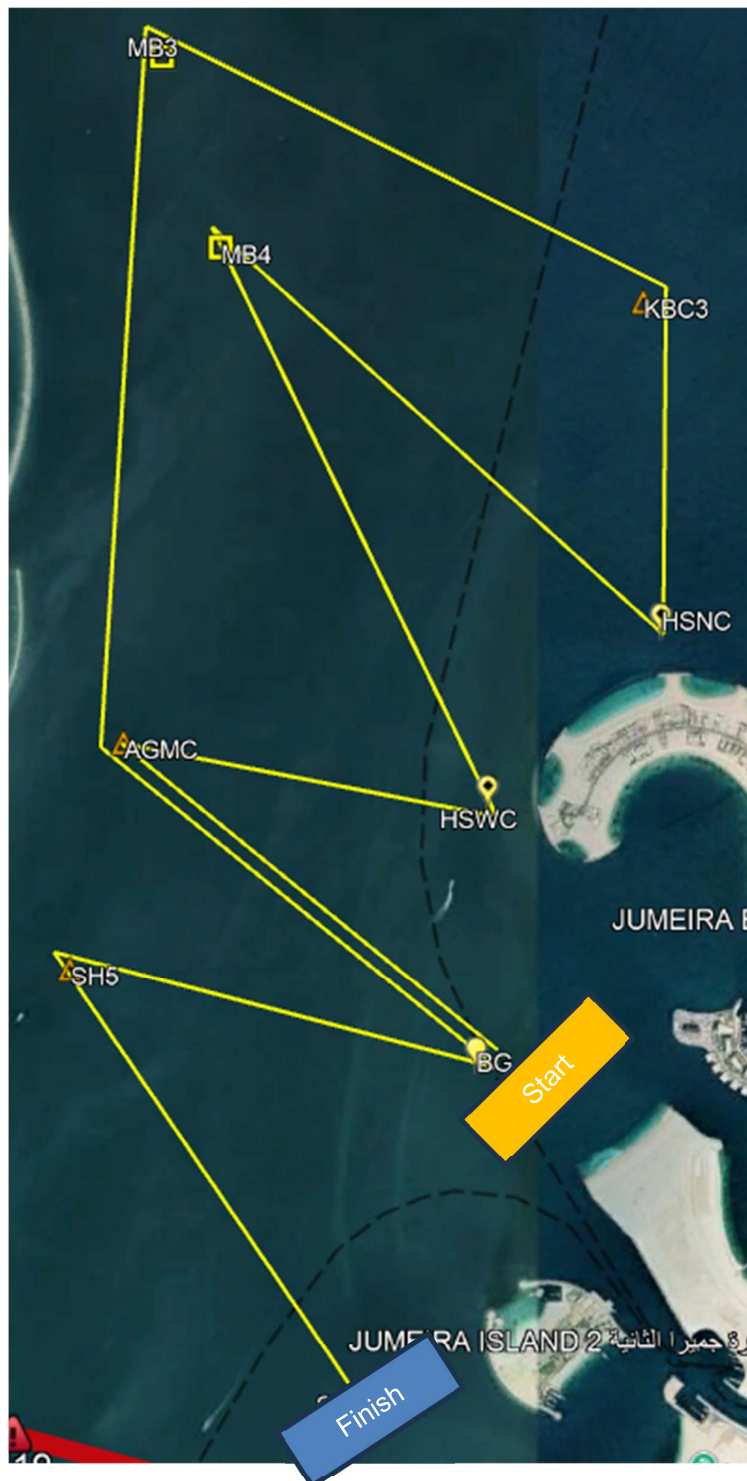
AGMC (P)

BG (S)

SH5 (P)

Finish [Committee Boat (P), Finish

Pin (S) {Coordinates in Mark Information}]



***Diagram is for illustration purposes only**

Mark Information

Abbreviation	Name	Mark Type	Lat	Long
AGMC	AGMC	Yellow Laid Inflatable	25° 13.245'N	55° 12.509'E
HSWC	Horseshoe West Cardinal	West Cardinal	25° 13.092'N	55° 13.400'E
MB4	Mooring Buoy 4	Fixed Mooring Buoy	25° 14.342'N	55° 12.746'E
HSNC	Horseshoe North Cardinal	North Cardinal	25° 13.473'N	55° 13.824'E
KBC4	Keelboat Coastal 4	Orange Laid Inflatable	25° 14.222'N	55° 13.782'E
MB3	Mooring Buoy 3	Fixed Mooring Buoy	25° 14.766'N	55° 12.602'E
BG	Bulgari Bay	Yellow Special Mark	25° 12.550'N	55° 13.372'E
SH5	Shorthanded 5	Green Laid Inflatable	25° 12.742'N	55° 12.378'E
SH Finish	Shorthanded finish	Orange triangle Laid Inflatable	25°11.756'N	55°13.183'E

*The colour and shape of marks may be communicated via VHF Channel 8.

*If a mark happens to be missing, please sail around the coordinate given in the correct direction.

When no finish boat is present, competitors must take their own finish time using GPS time and send it to sailingadmin@doscuae.com within 30 minutes of finishing in the HH:MM:SS format.