



AGMC



**DUBAI OFFSHORE
SAILING CLUB**

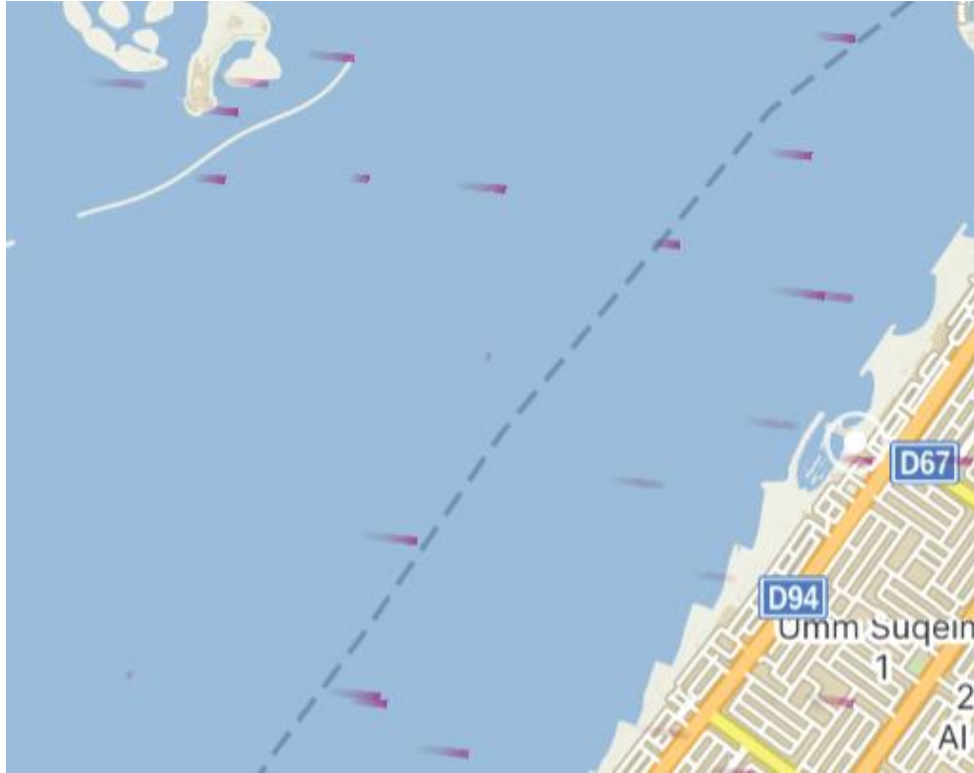
AGMC Geely Cup

16th May 2026

Sailors Briefing 12:30am

Start 2pm

Forecast



Addition to the Sailing Instructions

- 1.4. RRS 27.3 and 32 are changed to include: "If a government instruction, directive, or official communication, including an Emergency Public Safety Alert, is issued that affects the safety or legality of starting or continuing a race, the race shall be considered abandoned immediately, without the need for a signal or further notice from the Race Committee."



Sailing Area

SAILING AREA - B

SAILING AREA - A

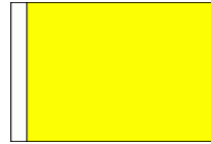
Exclusion zone



Starting Order Race 1

3-2-1-GO

- Gold
- Green
- Optimist



Quebec Flag



ILCA 6 Green Flag



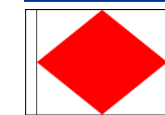
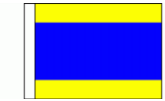
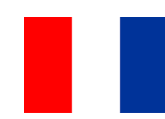
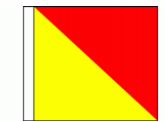
Optimist Flag

Starting Order Race 2 – Follow signals afloat

Inshore race flags - 5-4-1 Go

- Red/Fast
- Weta
- IRC 1
- IRC 2
- IRC 3 & J22
- IRC Cruiser
- Club Class
- Multihull
- SB 20

- Bravo Flag
- Pennant 6
- Oscar
- Tango
- Delta
- Pennant 9
- Juliet
- Foxtrot
- SB 20 class flag



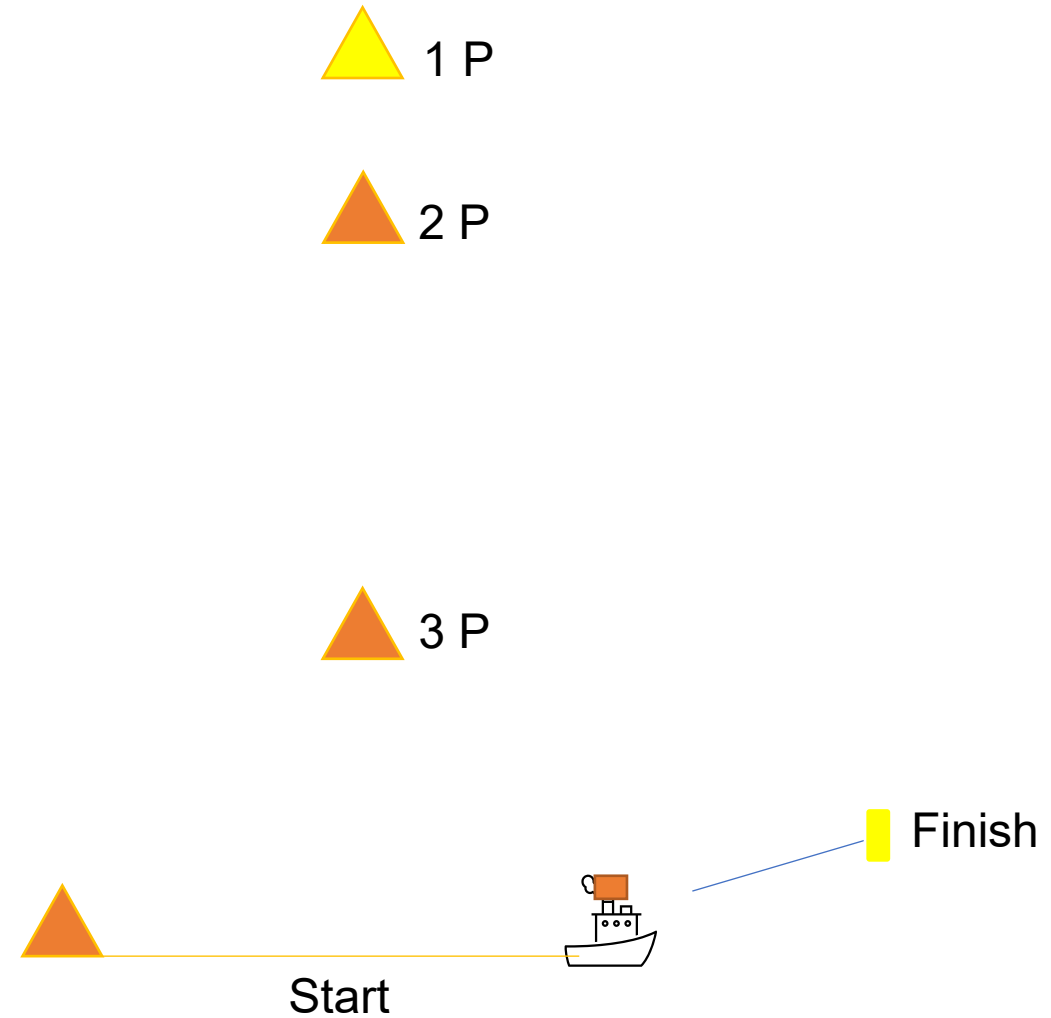
The Course - Dinghy

Courses

Gold fleet - S, 1P, 3P, 1P, 3P, Finish

Slow / Green fleet - S, 2P, 3P, 1P, 3P, Finish

Optimist – S, 2P, 3P, 2P, 3P, Finish



3 P

1 P

Inshore Course

**IRC 1, 2, & 3, Multihull and J22 OD:
Start, 1P, 3P, 4P, 3P, 4P, Finish**

**Red Fleet:
Start, 1P, 2P, 1P, Finish**

**Weta:
Start, 1P, 2P, 1P, Finish**

4 P

2 P



Start / Finish

The Course for IRC 1, 2, 3, J22, SB 20 & Red fleet:

Start [Committee (S), Pin (P)]

1P (P)

AGMC (P)

HSWC (P)

MB4 (P)

Finish [BG (S), CV (P)]

The Course - Coastal



***Diagram is for illustration purposes only**

The Course for Weta fleet:

Start [Committee Boat (S), Pin (P)]

1P (P)

AGMC (P)

HSWC (P)

1P (P)

Finish [BG (S), CV (P)]



***Diagram is for illustration purposes only**

The Course for IRC Cruiser & Club Class:

Start [Committee Boat (S), Pin (P)]

1P (S)

LM1 (P)

DDW1 (P)

MB4 (P)

Finish [BG (S), CV (P)]



***Diagram is for illustration purposes only**

The Course for Multihull:

Start [Committee Boat (S), Pin (P)]

1P (S)

LM1 (P)

DDW1 (P)

MB4 (P)

LM1 (S)

HSWC (P)

Finish [BG (S), CV (P)]



***Diagram is for illustration purposes only**

Mark Information

Abbreviation	Name	Mark Type	Lat	Long
LM1	La Mer	Orange Inflatable	25° 14.905'N	55° 14.894'E
DDW1	Dry Docks World 1	Green Inflatable	25° 16.850'N	55° 14.104'E
MB4	Mooring Buoy 4	Fixed Mooring Buoy	25° 14.342'N	55° 12.746'E
HSWC	Horseshoe West Cardinal	West Cardinal	25° 13.092'N	55° 13.400'E
AGMC	AGMC	Black Inflatable	25° 13.245'N	55° 12.509'E
BG	Bulgari Bay	Yellow Special Mark	25° 12.550'N	55° 13.372'E

*Laid inflatables may be any colour or shape and may be smart marks. The colour and shape of marks may be communicated via VHF Channel 8.

*If a mark happens to be missing, please sail around the coordinate given in the correct direction.

Finish

This race is scheduled to finish at a fixed finish line in the location previously published. A finish boat displaying a blue flag may be present to form the finish line.

If no finish boat is on station, competitors shall self-declare their finishing time.

- Competitors must take their own finish time using GPS time.
- Times must be submitted to sailingadmin@doscuae.com within 30 minutes of finishing.
- Please report your time in the HH:MM:SS format.

The finish line extends 100m (0.05 NM) from "BG" coordinates on a bearing of 80°, and boats shall finish within this distance.

Launching

- Dinghies are not allowed to Launch until Delta is displayed (1pm)
- Please help others to launch and recover
- Keep trolleys tidy





AGMC



DUBAI OFFSHORE
SAILING CLUB

GOOD LUCK!

AGMC Geely Cup