

AGMC – Geely Cup
16th May 2026
Coastal Courses:

The courses to be sailed are detailed below.

Mark rounding directions are given in brackets with (P) meaning Port Rounding and (S) meaning Starboard Rounding.

The Course for IRC 1, 2, 3, J22, SB 20 & Red fleet:

Start [Committee (S), Pin (P)]

1P (P)

AGMC (P)

HSWC (P)

MB4 (P)

Finish [BG (S), CV (P)]



***Diagram is for illustration purposes only**

The Course for Weta fleet:

Start [Committee Boat (S), Pin (P)]

1P (P)

AGMC (P)

HSWC (P)

1P (P)

Finish [BG (S), CV (P)]



***Diagram is for illustration purposes only**

The Course for IRC Cruiser & Club Class:

Start [Committee Boat (S), Pin (P)]

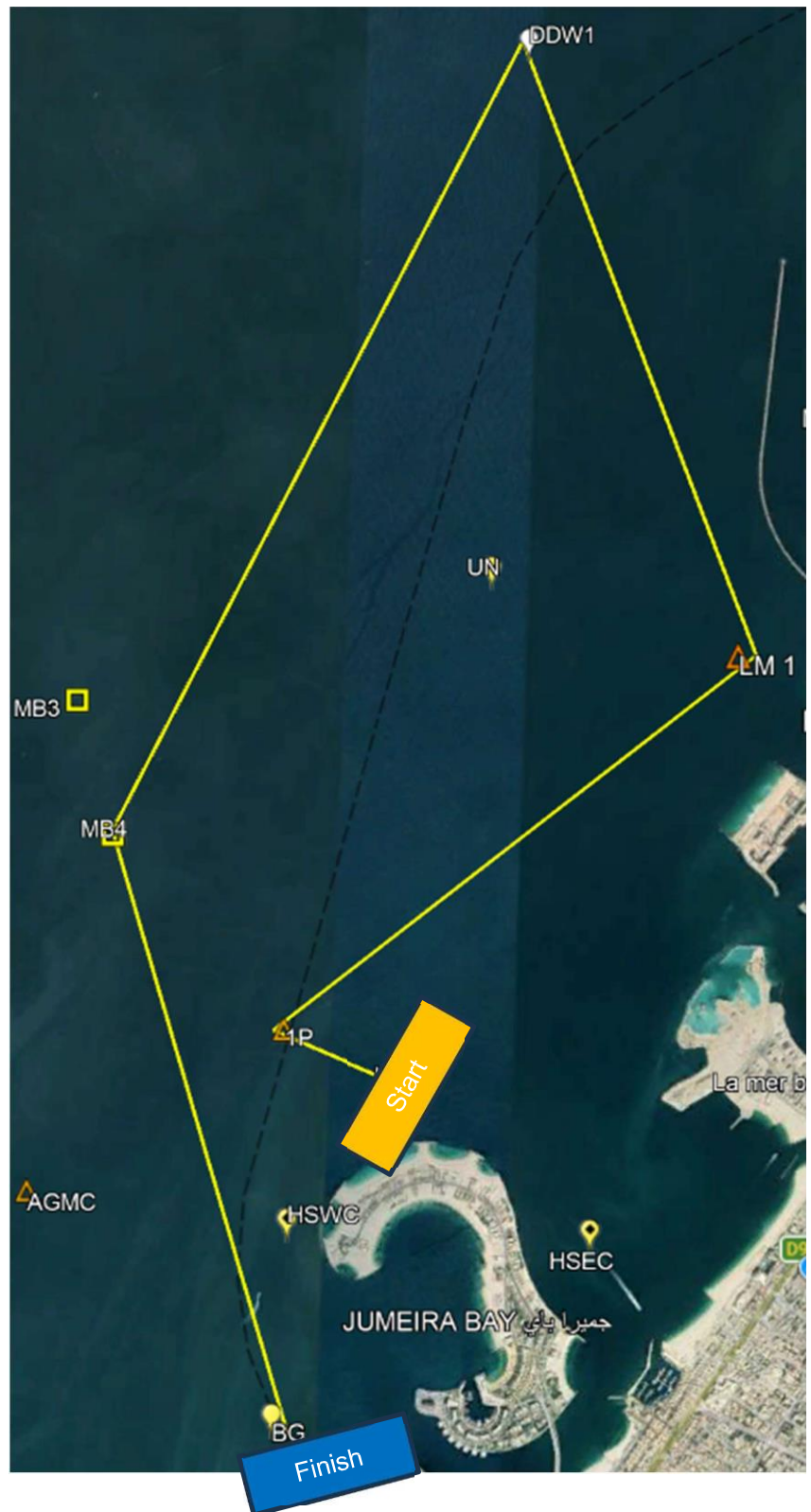
1P (S)

LM1 (P)

DDW1 (P)

MB4 (P)

Finish [BG (S), CV (P)]



***Diagram is for illustration purposes only**

The Course for Multihull:

Start [Committee Boat (S), Pin (P)]

1P (S)

LM1 (P)

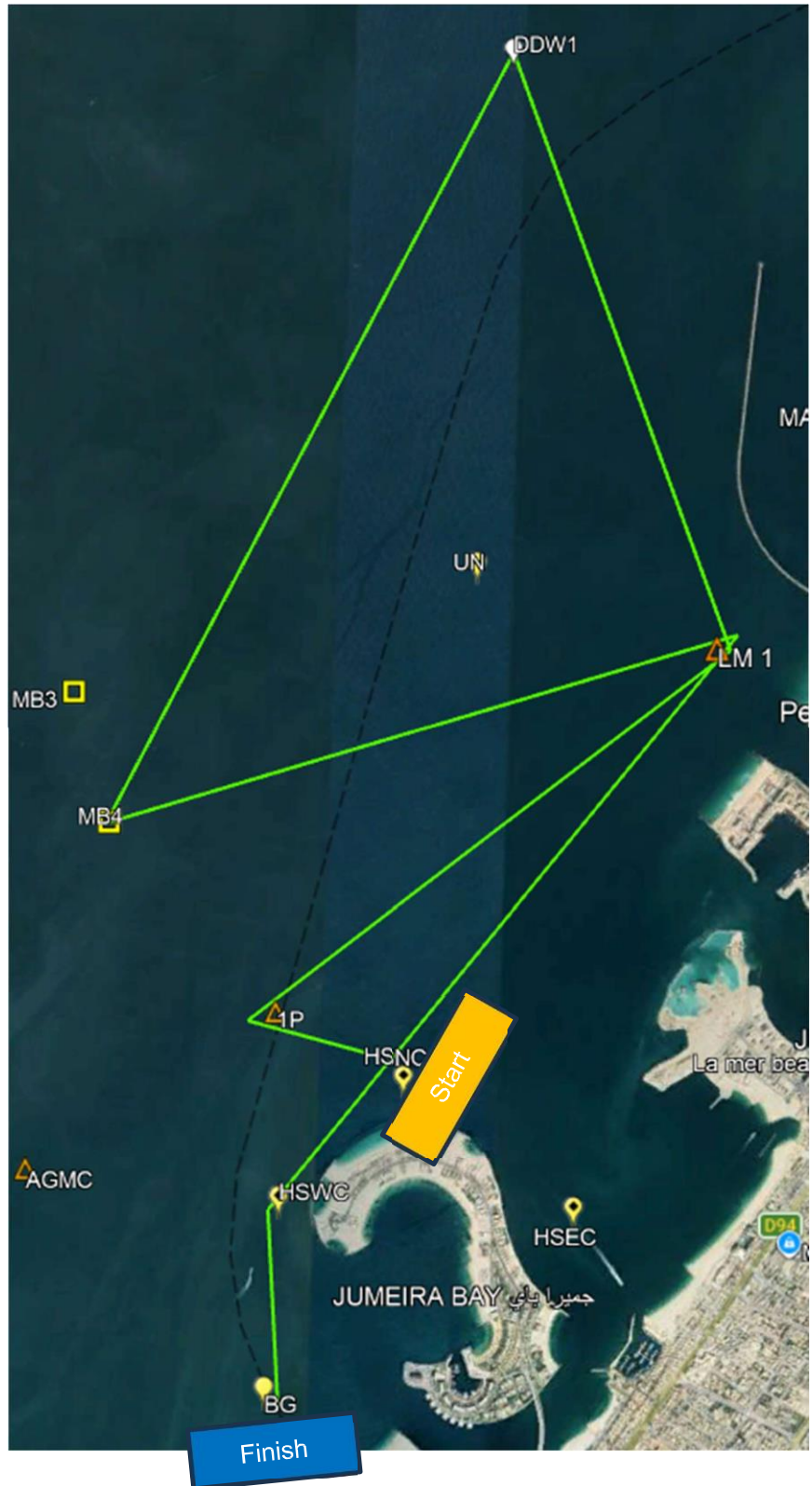
DDW1 (P)

MB4 (P)

LM1 (S)

HSWC (P)

Finish [BG (S), CV (P)]



***Diagram is for illustration purposes only**

Mark Information

Abbreviation	Name	Mark Type	Lat	Long
LM1	La Mer	Orange Inflatable	25° 14.905'N	55° 14.894'E
DDW1	Dry Docks World 1	Green Inflatable	25° 16.850'N	55° 14.104'E
MB4	Mooring Buoy 4	Fixed Mooring Buoy	25° 14.342'N	55° 12.746'E
HSWC	Horseshoe West Cardinal	West Cardinal	25° 13.092'N	55° 13.400'E
AGMC	AGMC	Black Inflatable	25° 13.245'N	55° 12.509'E
BG	Bulgari Bay	Yellow Special Mark	25° 12.550'N	55° 13.372'E

*Laid inflatables may be any colour or shape and may be smart marks. The colour and shape of marks may be communicated via VHF Channel 8.

*If a mark happens to be missing, please sail around the coordinate given in the correct direction.

Finish

This race is scheduled to finish at a fixed finish line in the location previously published. A finish boat displaying a blue flag may be present to form the finish line.

If no finish boat is on station, competitors shall self-declare their finishing time.

- Competitors must take their own finish time using GPS time.
- Times must be submitted to sailingadmin@doscuae.com within 30 minutes of finishing.
- Please report your time in the HH:MM:SS format.

The finish line extends 100m (0.05 NM) from “BG” coordinates on a bearing of 80°, and boats shall finish within this distance.